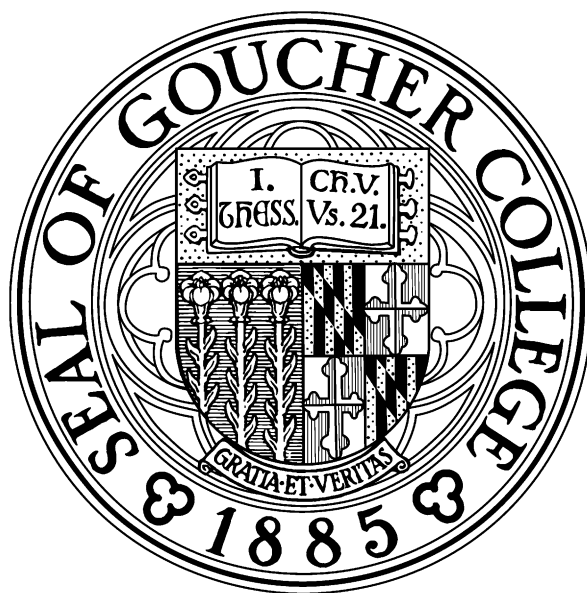


GOUCHER COLLEGE FACT BOOK

FALL 2013

&

FISCAL YEAR 2013



Prepared by:

Office of Institutional Research

April 2014

PREFACE

Observation and measurement are important steps in any strategy for improvement. The goal of the Office of Institutional Research is to support such improvement by providing clear and useful data resources to the Goucher community. The office continues to respond to the initiatives of the college's Strategic Plan by providing data on Goucher's retention and graduation rates and demographic data on students, faculty and staff. Every year, the Office of Institutional Research compiles the *Goucher College Fact Book* in an effort to provide a comprehensive source of institutional information. As the Fact Book expands, we increasingly seek to have the Goucher community use it as a sourcebook for their informational needs. Please let us know what additional Fact Book information would facilitate your work.

This, the eleventh edition of the *Fact Book*, includes data for the 2013 fiscal year (July 1, 2012, through June 30, 2013) and the Fall 2013 semester. It incorporates much trend data that should help to provide a historical perspective for the current year's information.

You can also find basic Goucher College enrollment data, degree statistics, and other files at www.goucher.edu/institutionalresearch . We hope this easy Web access to data will prove helpful.

We appreciate the many positive comments we have received about the *Fact Book's* utility. The Office of Institutional Research aims to continue to improve the *Fact Book*; your comments and suggestions are always welcome.

Finally, we would like to thank the many people at Goucher who have supported the production of the *Goucher College Fact Book*.

Office of Institutional Research
April 2014

TABLE OF CONTENTS

	Page
I. Summary Fact Sheet, Fall 2013	1
II. HEADCOUNT ENROLLMENT	2
A. Attendance	
1. Undergraduate Headcount Full-Time/ Part-Time, Fall 1994-2013	3
2. Undergraduate and Graduate Headcount, Fall 1994-2013.....	4
B. Program	
1. Undergraduate Headcount by Division, Primary Major and Gender: Fall 2013	5
2. Disciplines with 20 or More Majors, Fall 2013.....	6
3. Undergraduate Headcount Primary Major by Division, Fall 2004-2013	7
4. Undergraduate Headcount Enrollment by Division, Fall 2004-2013.....	8
5. Graduate Headcount Enrollment by Program, Fall 2004-2013.....	9
6. Headcount Enrollment: Graduate Programs in Education, Fall 2004-2013	10
C. Gender and Class	
1. Undergraduate Headcount Enrollment: Student Level by Gender, Fall 2013	11
2. Undergraduate Headcount Enrollment by Gender, Fall 1994-2013	12
3. Graduate Headcount Enrollment by Gender, Fall 1994-2013	13
4. Graduate and Undergraduate Program Enrollments by Gender and Attendance Status, Fall 2013	14
D. Ethnicity	
1. Undergraduate Headcount Enrollment by Ethnicity, Fall 1994-2013	15
2. Undergraduate Percentage Headcount by Ethnicity, Fall 1994-2013.....	16
3. Graduate Headcount Enrollment by Ethnicity, Fall 1994-2013	17
E. Residence	
1. Undergraduate Headcount by State of Residence and Full Time/Part Time Status, Fall 2013.....	18
2. Graduate Headcount by State of Residence and Full Time/Part Time Status, Fall 2013	19
3. First Time Freshman Headcount by State of Residence and Full Time/Part Time Status, Fall 2013	20
F. Cohorts	
1. First-Time, First-Year, Freshmen Cohorts Profile, Fall 2004-2013.....	21

TABLE OF CONTENTS

III. FULL-TIME EQUIVALENT STUDENTS (FTES).....	22
A. Undergraduate and Graduate FTES, Fall 2003-2013	23
B. Undergraduate and Graduate FTES, Spring 2003-2013	24
C. Undergraduate and Graduate FTES, Summer 2003-2013	25
IV. DEGREE DATA	26
A. Program	
1. Degrees and Certificates Awarded by Program, FY 2013	27
2. Bachelor's Degree Recipients in Disciplines with the Largest Number of Primary Majors, FY 2013	28
3. Bachelor's Degree Recipients in Disciplines with the Largest Number of Primary and Secondary Majors, FY 2013	29
4. Bachelor's Degree Recipients by Primary Major, FY 2004-2013.....	30
5. Bachelor's Degree Recipients by Division, FY 2004-2013.....	31
6. Percentage of Bachelor's Degree Recipients by Division, FY 2013	32
7. Graduate Degrees and Certificates Awarded, FY 2004-2013	33
B. Gender and Ethnicity	
1. Bachelor's Degree Recipients by Primary Major and Gender, FY 2013.....	34
2. Degrees and Certificates Awarded by Program, Gender, FY 2013.....	35
3. Degrees and Certificates Awarded by Program, Ethnicity, FY 2013.....	36
C. Multiple Majors	
1. Bachelor's Degree Recipients: Single and Double Majors, FY 2013	37
2. Bachelor's Degree Recipients: Secondary Majors by Gender, FY 2013	38
3. Bachelor's Degree Recipients (more than one major) by Gender, Ethnicity, FY 2013.....	39
4. Bachelor's Degree Recipients: by Minors, FY 2013	40
V. GRADUATION RATE AND RETENTION RATE DATA.....	41
A. Graduation	
1. Graduation Rates after 4, 5, and 6 Years, Cohorts of 1999-2009	42
2. Graduation Rates after 4, 5, and 6 Years by Selected Ethnicities for Freshman Cohorts of 1999-2007	43
3. Graduation Rates after 4, 5, and 6 Years by Gender, Freshman Cohorts of 1999-2007.....	44

4. Six-Year Graduation Rate Trends by Gender, 1999-2007 Cohorts	45
5. Six-Year Graduation Rate Trends by Ethnicity, 1999-2007 Cohorts	46
B. Retention	
1. Freshman Cohort Retention by Gender, Fall 2008 to Fall 2012	47
2. Freshman Cohort Retention by Ethnicity, Fall 2008 to Fall 2012	48
VI. FACULTY AND STAFF DATA	49
A. Faculty	
1. Undergraduate Faculty: Headcounts and FTE, Fall 2004-2013	50
2. Instructional Personnel by Tenure Status, Fall 2013	51
3. Faculty Gender	
a. Full-Time Undergraduate Faculty by Gender, Fall 2013	52
b. Full-Time Undergraduate Tenured Faculty by Gender, Fall 2004-2013	53
c. Full-Time Undergraduate Faculty by Tenure Status and Gender, Fall 2013	54
4. Faculty Ethnicity	
a. Ethnicity of Full-Time Undergraduate Faculty, Fall 2013	55
b. Full-Time Undergraduate Faculty by Ethnicity, Fall 2004-2013	56
5. Faculty Ethnicity and Gender	
a. Full-Time Undergraduate Faculty by Ethnicity and Gender, Fall 2013	57
b. Half-Time and Part-Time Undergraduate Faculty by Ethnicity and Gender, Fall 2013	58
6. Faculty Terminal Degrees	
a. Full-Time Undergraduate Faculty by Terminal Degree, Fall 2004-2013	59
b. Full-Time, Half-Time and Part-Time Undergraduate Faculty by Terminal Degree, Fall 2013	60
7. Undergraduate Student Faculty Ratio	61
B. Non-faculty Full-Time Staff	
1. Full-Time Female Nonfaculty Employees: Ethnicity by Occupational Category, Fall 2013	62
2. Full-Time Male Non-faculty Employees: Ethnicity by Occupational Category, Fall 2013	63
3. All Full-Time Nonfaculty Employees: Ethnicity by Occupational Category, Fall 2013	64
VII. INSTITUTIONAL DATA	65
A. Endowment, FY 1999-2013	66
B. Total Expenses, FY 2004-2013	67
C. Net Investment in Plant Assets, FY 1999-2013	68

VIII. GLOSSARY	69
Glossary of Terms.....	70-71

Goucher College Fall 2013 Summary Fact Sheet

Headcount Enrollment *

	Undergraduate		Graduate		Total	
	Number	Percentage	Number	Percentage	Number	Percentage
By Gender						
Male	488	33.7%	156	23.6%	644	30.5%
Female	961	66.3%	506	76.4%	1467	69.5%
Total	1449	100.0%	662	100.0%	2111	100.0%

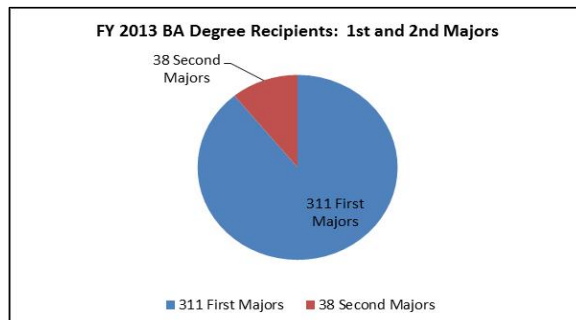
By Standing		
First Year Freshmen	401	27.7%
New Transfer	36	2.5%
Study Abroad	80	5.5%
Non-candidate	5	0.3%
Returning Students	927	64.0%
Total	1449	100.0%

By Attendance						
Full-Time	1424	98.3%	161	24.3%	1585	75.1%
Part-Time	25	1.7%	501	75.7%	526	24.9%
Total	1449	100.0%	662	100.0%	2111	100.0%

By Ethnicity						
International (nonresident alien)	30	2.1%	3	0.5%	33	1.6%
African American	127	8.8%	64	9.7%	191	9.0%
American Indian	3	0.2%	1	0.2%	4	0.2%
Asian	46	3.2%	1	0.2%	47	2.2%
Hispanic	108	7.5%	8	1.2%	116	5.5%
Native Hawaiian	3	0.2%	0	0.0%	3	0.1%
Two or more races	60	4.1%	6	0.9%	66	3.1%
White	989	68.3%	240	36.3%	1229	58.2%
Unknown/Other	83	5.7%	339	51.2%	422	20.0%
Total	1449	100.0%	662	100.0%	2111	100.0%

Bachelor's Degree Recipients in Fiscal Year 2013

Most Common Majors Among Bachelor's Degree Recipients (Total First and Second Majors)		
Psychology Major	49	14.0%
Communication Major	32	9.2%
Biological Sciences Major*	23	6.6%
Fine Arts Major	22	6.3%
Business Management Major	22	6.3%
English	20	5.7%
Sociology Major†	20	5.7%
Int'l Relations Major	14	4.0%
History Major	13	3.7%
All other majors	134	38.4%
Total Majors	349	100.0%



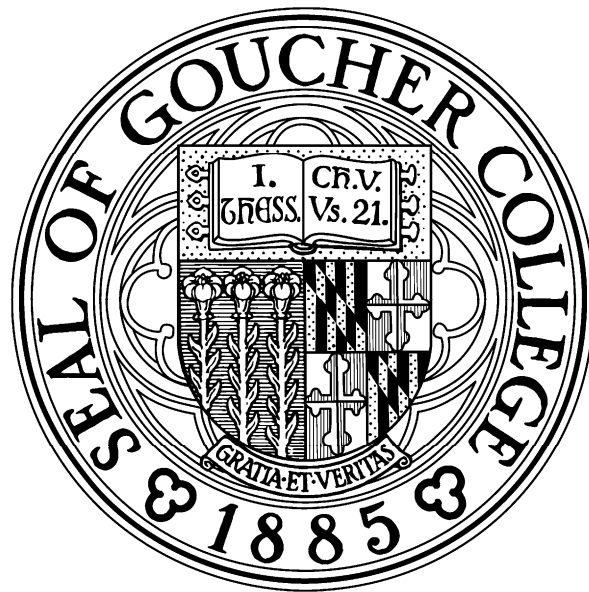
* Biological Sciences includes Biology Majors and Biochemistry & Molecular Biology Majors.

† Sociology includes Sociology Majors and Sociology & Anthropology Majors.

FY 2013 Degree Recipients	Headcount	Percentage of Total Degrees
Total Bachelor's Degrees	311	63.3%
Master's Degree Recipients:		
Education (M. Ed.)	52	10.6%
Teaching	39	7.9%
Creative Nonfiction	21	4.3%
Cultural Sustainability	8	
Historic Preservation	4	0.8%
Arts Administration	10	2.0%
Total Master's Degrees	134	27.3%
Post-Baccalaureate Certificates:		
Premedical	30	6.1%
Education and Teaching	16	3.3%
Total Post-Bac Certificates	46	9.4%
Total Degrees and Certificates	491	100.0%

*Total headcount is as of the census date of 09/27/13. Counts include credits only and all study abroad students.

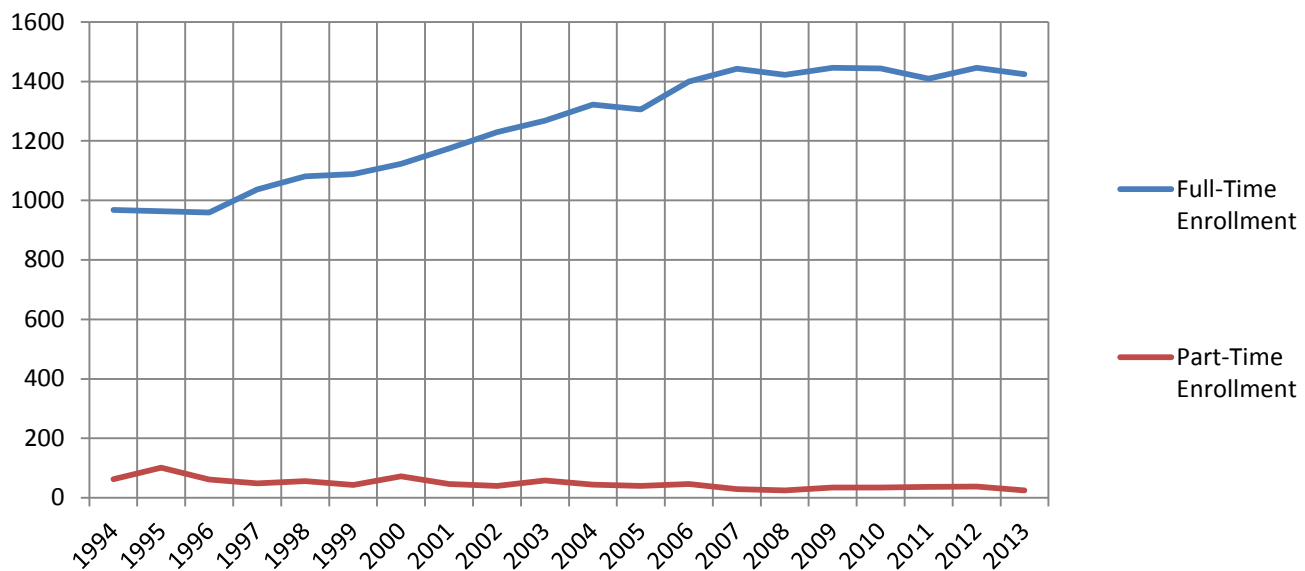
Headcount Enrollment



Full-Time and Part-Time Undergraduate Headcount Enrollment: Fall 1994-2013

	Full-Time Enrollment		Part-Time Enrollment		Total Enrollment	
1994	968	94%	63	6%	1031	100%
1995	964	91%	101	9%	1065	100%
1996	959	94%	61	6%	1020	100%
1997	1037	96%	48	4%	1085	100%
1998	1081	95%	56	5%	1137	100%
1999	1088	96%	43	4%	1131	100%
2000	1123	94%	72	6%	1195	100%
2001	1175	95%	46	5%	1221	100%
2002	1230	97%	40	3%	1270	100%
2003	1268	96%	58	4%	1326	100%
2004	1322	97%	44	3%	1366	100%
2005	1306	97%	40	3%	1346	100%
2006	1400	97%	46	3%	1446	100%
2007	1443	98%	29	2%	1472	100%
2008	1422	98%	25	2%	1447	100%
2009	1446	98%	35	2%	1481	100%
2010	1444	98%	35	2%	1479	100%
2011	1409	97%	37	3%	1446	100%
2012	1446	97%	38	3%	1484	100%
2013	1424	98%	25	2%	1449	100%

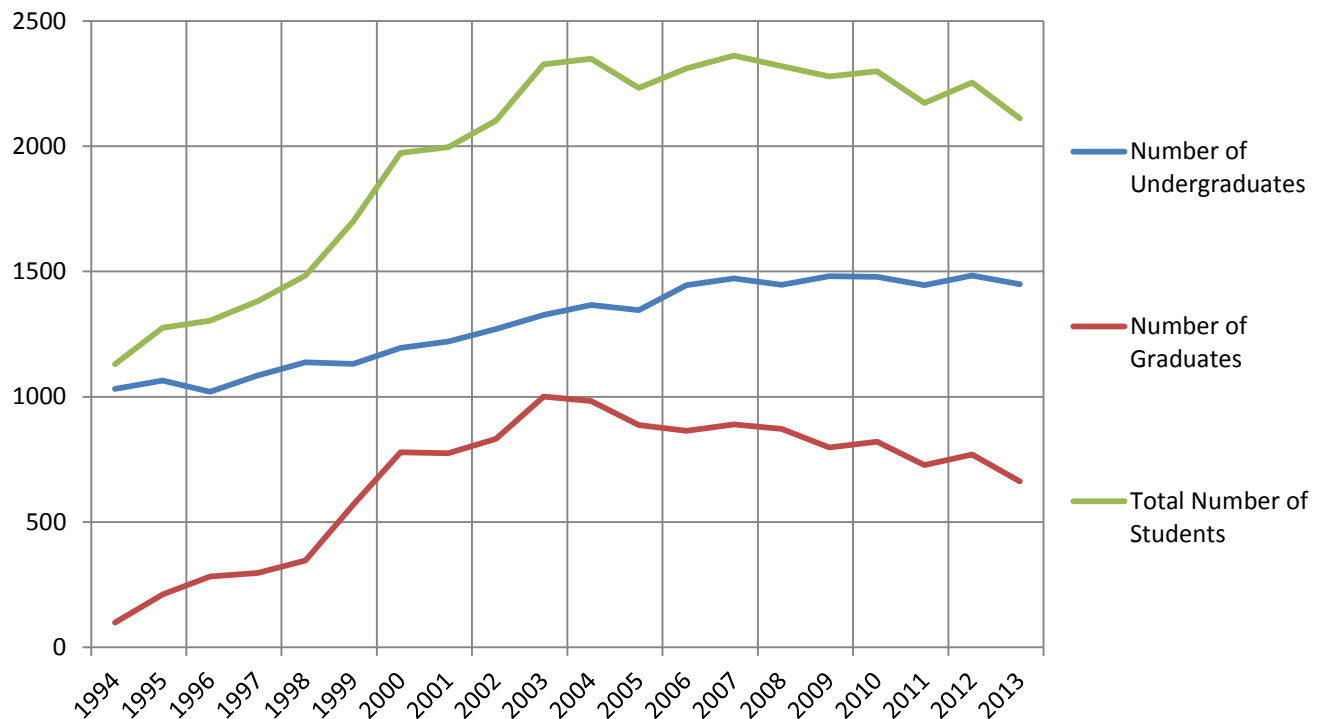
Full-Time and Part-Time Undergraduate Headcount Enrollment: Fall 1994-2013



Undergraduate and Graduate Headcount Enrollment: Fall 1994-2013

Year of Fall Term	Number of Undergraduates	Number of Graduates	Total Number of Students
1994	1031	99	1130
1995	1065	211	1276
1996	1020	283	1303
1997	1085	297	1382
1998	1137	347	1484
1999	1131	569	1700
2000	1195	778	1973
2001	1221	775	1996
2002	1270	832	2102
2003	1326	1001	2327
2004	1366	983	2349
2005	1346	887	2233
2006	1446	864	2310
2007	1472	890	2362
2008	1447	872	2319
2009	1481	798	2279
2010	1479	820	2299
2011	1446	727	2173
2012	1484	770	2254
2013	1449	662	2111

Undergraduate and Graduate Headcount Enrollment: Fall 1994-2013



Undergraduate Primary Major by Division, Gender, Fall 2013

Division/Major

Humanities	Male	Female	Total	% Male	% Female	% Total
Communication	24	35	59	4.9%	3.6%	4.1%
English	19	30	49	3.9%	3.1%	3.4%
French	3	10	13	0.6%	1.0%	0.9%
History	12	17	29	2.5%	1.8%	2.0%
Philosophy	8	5	13	1.6%	0.5%	0.9%
Religion	0	4	4	0.0%	0.4%	0.3%
Russian	1	2	3	0.2%	0.2%	0.2%
Spanish	2	18	20	0.4%	1.9%	1.4%
Humanities Total	69	121	190	14.1%	12.6%	13.1%
Social Sciences						
Economics	7	8	15	1.4%	0.8%	1.0%
Education*	3	28	31	0.6%	2.9%	2.1%
International Relations	8	12	20	1.6%	1.2%	1.4%
Management	30	27	57	6.1%	2.8%	3.9%
Political Science	15	11	26	3.1%	1.1%	1.8%
Sociology**	9	43	52	1.8%	4.5%	3.6%
Social Sciences Total	72	129	201	14.8%	13.4%	13.9%
Natural Sciences and Math						
Biological Sciences	8	26	34	1.6%	2.7%	2.3%
Bio Chemistry and Molecular Biology	1	4	5	0.2%	0.4%	0.3%
Chemistry	5	15	20	1.0%	1.6%	1.4%
Computer Science	7	2	9	1.4%	0.2%	0.6%
Mathematics	6	3	9	1.2%	0.3%	0.6%
Physics	11	4	15	2.3%	0.4%	1.0%
Psychology	23	67	90	4.7%	7.0%	6.2%
Natural Sciences and Math Total	61	121	182	12.5%	12.6%	12.6%
Arts						
Art	1	7	8	0.2%	0.7%	0.6%
Art History	0	10	10	0.0%	1.0%	0.7%
Dance	1	31	32	0.2%	3.2%	2.2%
Music	9	8	17	1.8%	0.8%	1.2%
Studio Art	3	8	11	0.6%	0.8%	0.8%
Theatre	3	7	10	0.6%	0.7%	0.7%
Arts Total	17	71	88	3.5%	7.4%	6.1%
Interdisciplinary Studies						
American Studies	1	2	3	0.2%	0.2%	0.2%
Environmental Studies	15	20	35	3.1%	2.1%	2.4%
Individualized Major	3	1	4	0.6%	0.1%	0.3%
Peace Studies	1	20	21	0.2%	2.1%	1.4%
Women's Studies	2	10	12	0.4%	1.0%	0.8%
Interdisciplinary Studies Total	22	53	75	4.5%	5.5%	5.2%
Total Declared Majors	241	495	736	49.4%	51.5%	50.8%
Undeclared Students	247	466	713	50.6%	48.5%	49.2%
Total Headcount	488	961	1449	100.0%	100.0%	100.0%

*The Education major includes both Education and Special Education majors.

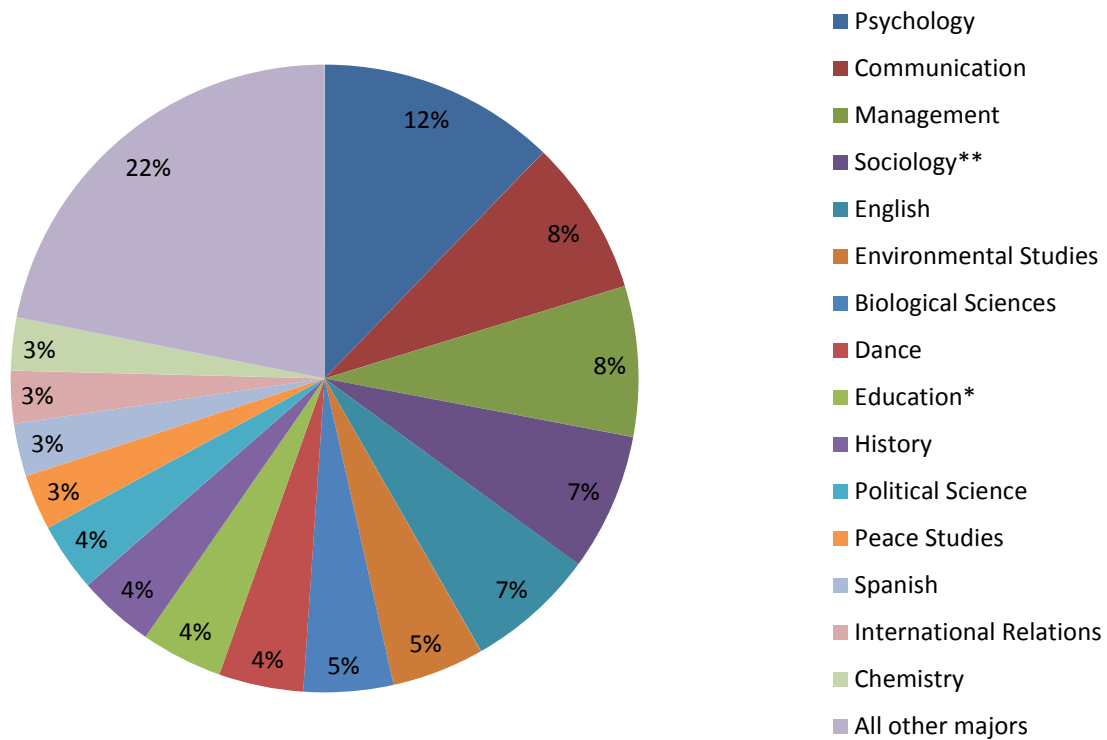
**The Sociology major includes both Sociology and Sociology & Anthropology majors.

Disciplines with 20 or More Majors, Fall 2013

Major	Number of Majors	Percentage of Declared Majors*
Psychology	90	12%
Communication	59	8%
Management	57	8%
Sociology**	52	7%
English	49	7%
Environmental Studies	35	5%
Biological Sciences	34	5%
Dance	32	4%
Education*	31	4%
History	29	4%
Political Science	26	4%
Peace Studies	21	3%
Spanish	20	3%
International Relations	20	3%
Chemistry	20	3%
All other majors	161	22%

* Includes declared first majors

Percentage of Declared Majors - Fall 2013



Undergraduate Headcount: Primary Major by Division, Fall 2004-2013

Major	2004	2005	2006	2007	2008	2009	2010	2011	2012	2013
Humanities										
Communication	65	54	68	71	71	79	65	77	66	59
English	61	51	59	65	73	72	54	48	55	49
French	6	11	11	6	3	10	15	21	16	13
Historic Preservation	6	5	4	5	3	0	0	0	0	0
History	21	22	26	33	31	29	29	30	29	29
Philosophy	14	10	9	9	14	24	25	20	16	13
Religion	7	4	2	5	8	12	7	6	5	4
Russian	1	2	1	2	3	5	6	7	6	3
Spanish	12	6	9	17	13	17	27	22	18	20
All Humanities	193	165	189	213	219	248	228	231	211	190
Social Sciences										
Economics	8	4	4	7	16	14	12	5	15	15
Education	21	25	24	26	17	18	21	18	25	13
International Relations	10	12	15	21	23	27	36	22	21	20
Management	47	45	44	35	29	27	31	49	54	57
Political Science	27	25	26	27	23	32	29	28	28	26
Sociology	24	29	35	38	45	45	24	31	50	40
Sociology & Anthropology**	0	0	0	0	0	0	15	14		12
Special Education**	0	0	0	0	0	0	7	6		18
All Social Sciences	137	140	148	154	153	163	175	173	193	201
Natural Sciences and Math										
Biological Sciences	35	41	40	39	41	40	53	45	38	34
Bio Chemistry and Molecular Biology***	0	0	0	0	0	0	0	6	5	5
Chemistry	19	21	21	13	11	12	20	23	20	20
Computer Science	9	8	13	8	4	7	5	9	11	9
Mathematics	15	14	9	6	8	7	10	9	9	9
Physics	4	4	5	4	6	6	6	5	9	15
Psychology	87	93	103	93	91	98	106	97	99	90
All Natural Sciences and Math	169	181	191	163	161	170	200	194	191	182
Arts										
Art										8
Art History										10
Dance	30	35	31	28	29	40	42	35	32	32
Fine Arts	30	35	31	41	52	52	37	43	44	
Music	15	14	14	23	22	17	20	29	26	17
Studio Art										11
Theatre	14	19	19	16	15	17	15	11	11	10
All Arts	89	103	95	108	118	126	114	118	113	88
Interdisciplinary Studies										
American Studies	2	5	6	3	5	6	5	5	5	3
Environmental Studies**	0	0	0	0	0	0	2	14	33	35
Individualized Major	8	7	3	3	6	7	4	3	2	4
International/Intercultural Studies	12	3	0	0	0	0	0	0	0	0
Peace Studies*	0	5	13	19	29	38	25	24	27	21
Women's Studies	7	5	6	9	7	10	12	9	6	12
All Interdisciplinary Studies	29	25	28	34	47	61	48	55	73	75
General Undeclared or Undecided (including non-degree seeking)										
	749	732	795	800	749	713	714	675	703	713
Total Headcount	1366	1346	1446	1472	1447	1481	1479	1446	1484	1449

* Peace Studies was established as a major in 2005.

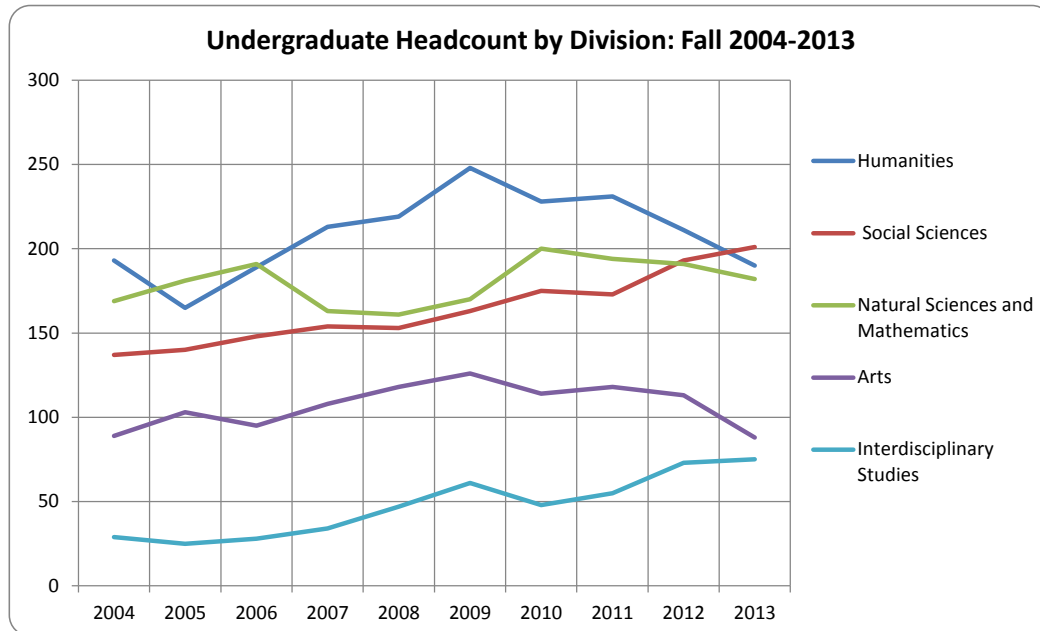
** Environmental Studies, Sociology & Anthropology, and Special Education were established as majors in 2010.

*** Bio Chemistry and Molecular Biology was established as a major in 2011.

**** Fine Arts includes Art, Art History and Studio Art majors. After Fall 2012, Fine Arts majors are reported separately.

Undergraduate Headcount by Division: Fall 2004-2013

	2004	2005	2006	2007	2008	2009	2010	2011	2012	2013
Humanities	193	165	189	213	219	248	228	231	211	190
Social Sciences	137	140	148	154	153	163	175	173	193	201
Natural Sciences and Mathematics	169	181	191	163	161	170	200	194	191	182
Arts	89	103	95	108	118	126	114	118	113	88
Interdisciplinary Studies	29	25	28	34	47	61	48	55	73	75



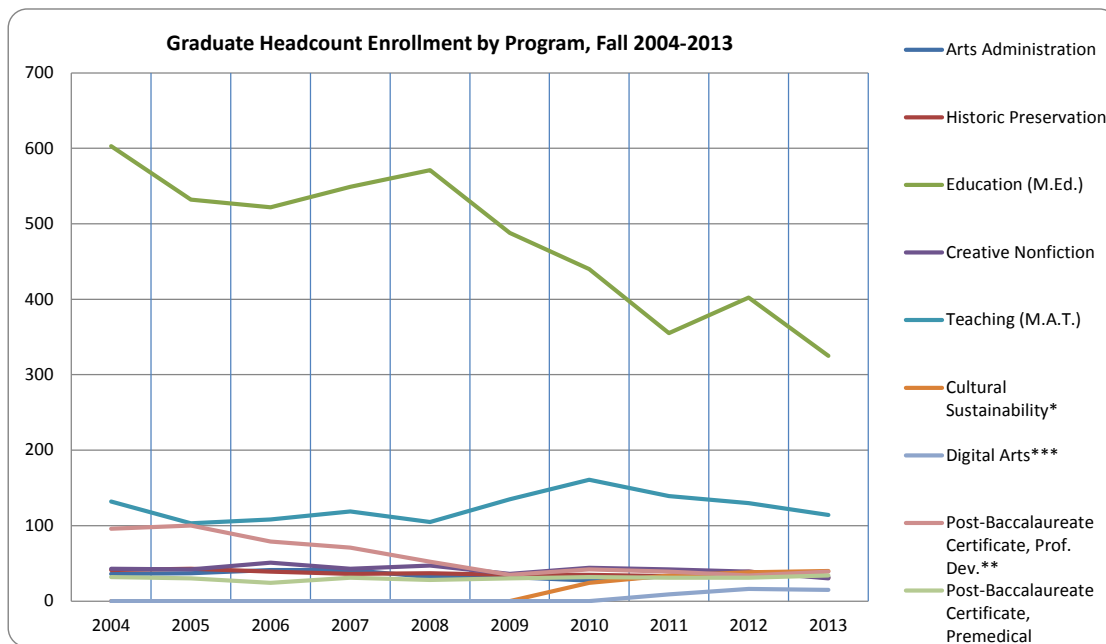
**Graduate Headcount Enrollment by Program
Fall 2004-2013**

	2004	2005	2006	2007	2008	2009	2010	2011	2012	2013
Arts Administration	36	37	41	41	32	32	27	33	38	32
Historic Preservation	41	43	39	36	37	35	35	33	39	31
Education (M.Ed.)	603	532	522	549	571	488	440	355	402	325
Creative Nonfiction	43	42	51	43	47	36	44	42	39	30
Teaching (M.A.T.)	132	103	108	119	105	135	161	139	130	114
Cultural Sustainability*	0	0	0	0	0	0	24	34	38	40
Digital Arts***	0	0	0	0	0	0	0	9	16	15
Post-Baccalaureate Certificate, Prof. Dev.**	96	100	79	71	52	35	42	39	34	39
Post-Baccalaureate Certificate, Premedical	32	30	24	31	28	30	32	31	31	34
Teachers Institute**	0	0	0	0	0	0	14	8	0	0
Graduate Certification	0	0	0	0	0	0	0	4	3	2
Undeclared Program	0	0	0	0	0	0	1	0	0	0
Total	983	887	864	890	872	791	820	727	770	662

* The Cultural Sustainability program began in 2010.

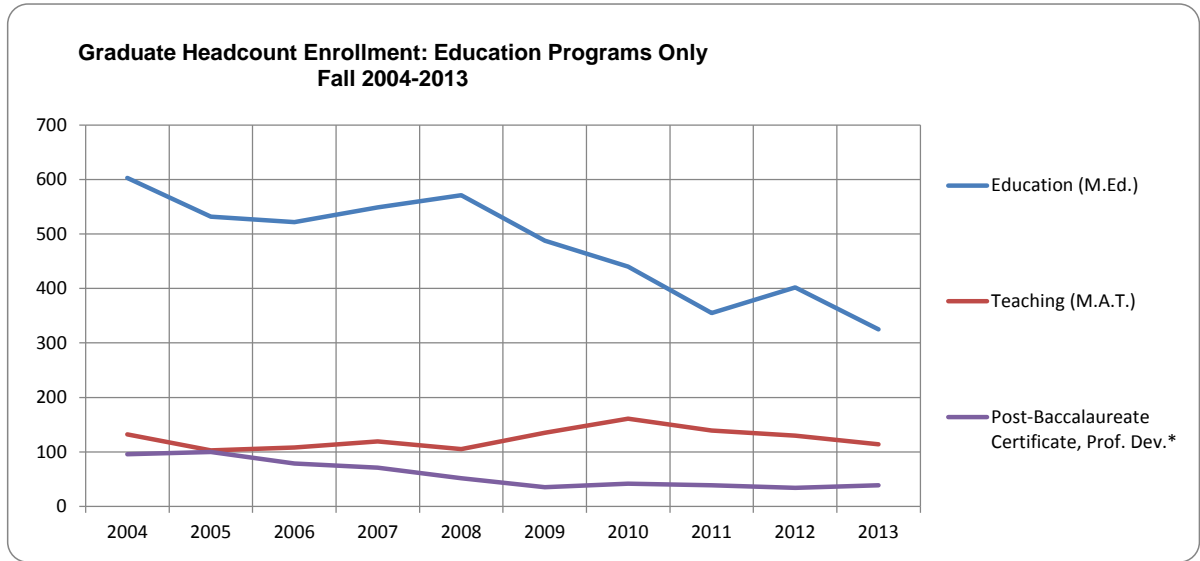
**The Teacher's Institute program was considered to be part of the Post-Bac Professional Development program until 2010, when it became its own entity.

***The Digital Arts and Graduate Certification programs began in 2011.



**Graduate Headcount Enrollment: Education Programs Only
Fall 2004-2013**

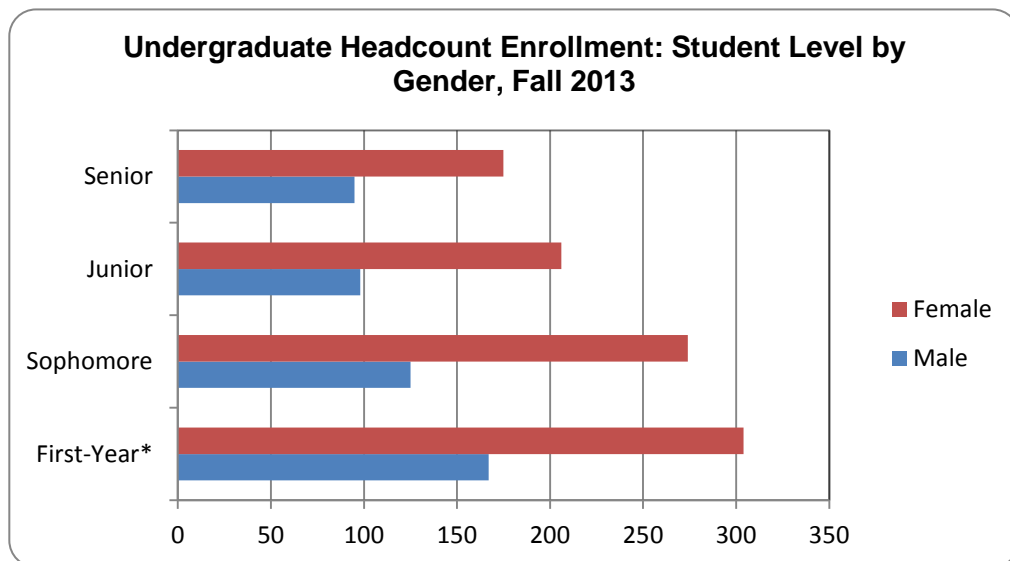
	2004	2005	2006	2007	2008	2009	2010	2011	2012	2013
Education (M.Ed.)	603	532	522	549	571	488	440	355	402	325
Teaching (M.A.T.)	132	103	108	119	105	135	161	139	130	114
Post-Baccalaureate Certificate, Prof. Dev.*	96	100	79	71	52	35	42	39	34	39
Teachers Institute*	0	0	0	0	0	0	14	8	0	0
Total	831	735	709	890	728	658	820	541	566	478



*The Teacher's Institute Program was considered to be part of the Post-Bac Professional Development Program until 2010. For this reason, Professional Development has been included on this Ed-specific chart.

Undergraduate Headcount Enrollment: Student Level by Gender, Fall 2013

Class	Male	Female	Total	Male	Female	Total
First-Year*	167	304	471	11.5%	21.0%	32.5%
Sophomore	125	274	399	8.6%	18.9%	27.5%
Junior	98	206	304	6.8%	14.2%	21.0%
Senior	95	175	270	6.6%	12.1%	18.6%
Non-Candidate	3	2	5	0.2%	0.1%	0.3%
Total	488	961	1449	33.7%	66.3%	100.0%

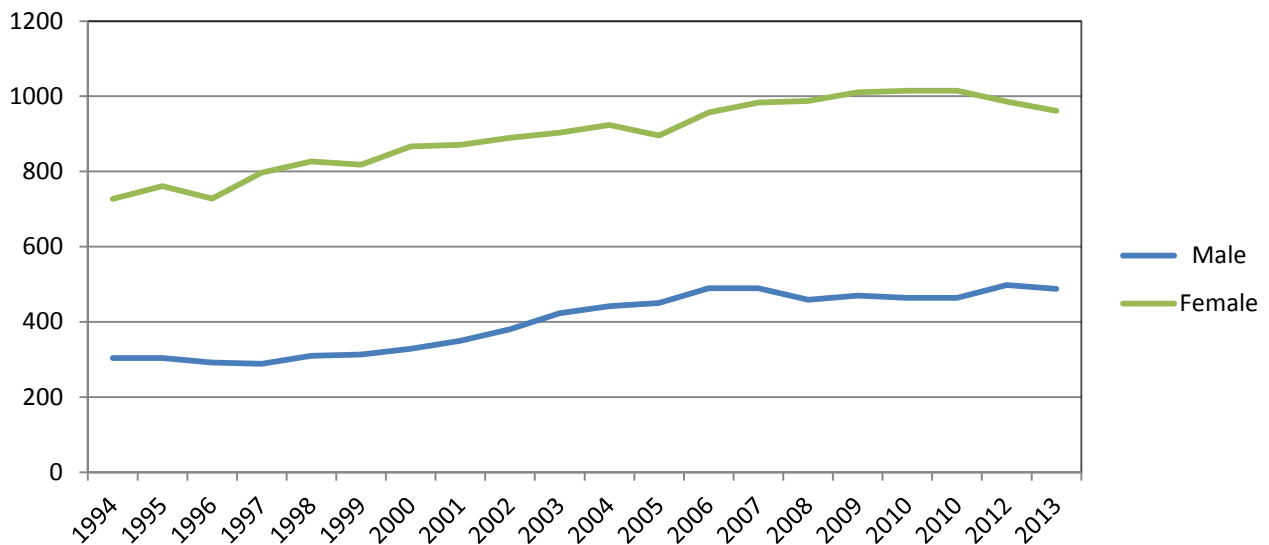


*First-Year includes the 2012 fall cohort (first-time, first-year students) and all other students with fewer than 27 credits (including first-year transfers).

Undergraduate Headcount Enrollment by Gender Fall 1994-2013

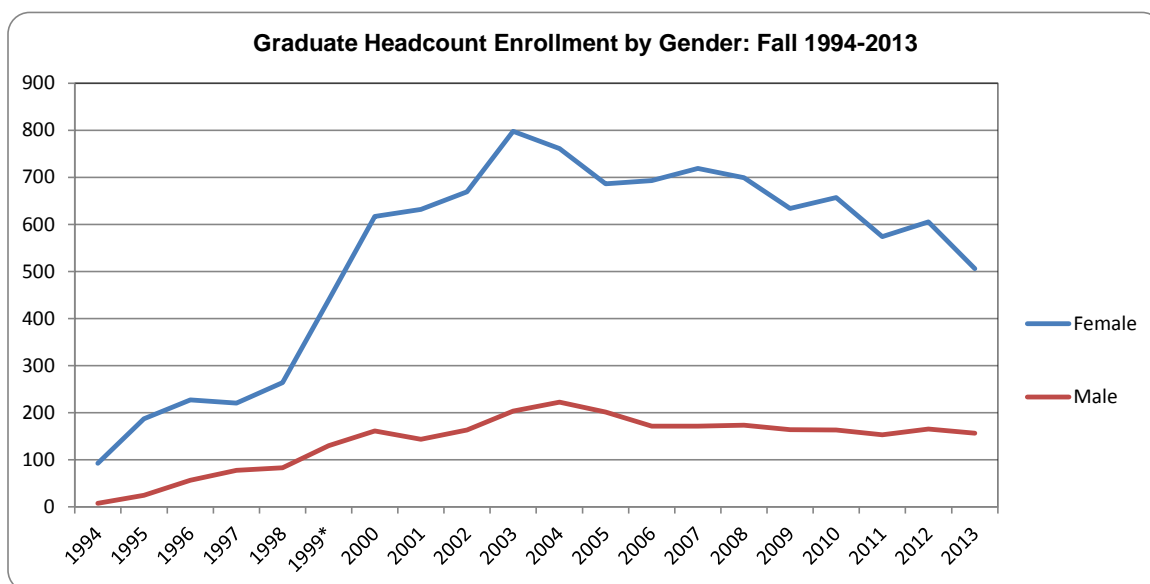
	Male		Female		Total	
1994	304	29%	727	71%	1031	100%
1995	304	29%	761	71%	1065	100%
1996	292	29%	728	71%	1020	100%
1997	288	27%	797	73%	1085	100%
1998	310	27%	827	73%	1137	100%
1999	313	28%	818	72%	1131	100%
2000	328	27%	867	73%	1195	100%
2001	350	29%	871	71%	1221	100%
2002	380	30%	890	70%	1270	100%
2003	423	32%	903	68%	1326	100%
2004	442	32%	924	68%	1366	100%
2005	450	33%	896	67%	1346	100%
2006	489	34%	957	66%	1446	100%
2007	489	33%	983	67%	1472	100%
2008	459	32%	988	68%	1447	100%
2009	470	32%	1011	68%	1481	100%
2010	464	31%	1015	69%	1479	100%
2010	464	31%	1015	69%	1479	100%
2012	498	34%	986	66%	1484	100%
2013	488	34%	961	66%	1449	100%

**Undergraduate Headcount Enrollment by Gender: Fall
1994-2013**



Graduate Headcount Enrollment by Gender Fall 1994-2013

	1994	1995	1996	1997	1998	1999*	2000	2001	2002	2003	2004	2005	2006	2007	2008	2009	2010	2011	2012	2013
Female	92	187	227	220	264	439	617	632	669	798	761	686	693	719	699	634	657	574	605	506
Male	7	24	56	77	83	130	161	143	163	203	222	201	171	171	173	164	163	153	165	156
Total	99	211	283	297	347	569	778	775	832	1001	983	887	864	890	872	798	820	727	770	662



*Growth in graduate enrollment is associated with off-campus expansion of the Master of Education Program.

Graduate and Undergraduate Program Enrollments by Gender and Attendance Status, Fall 2013

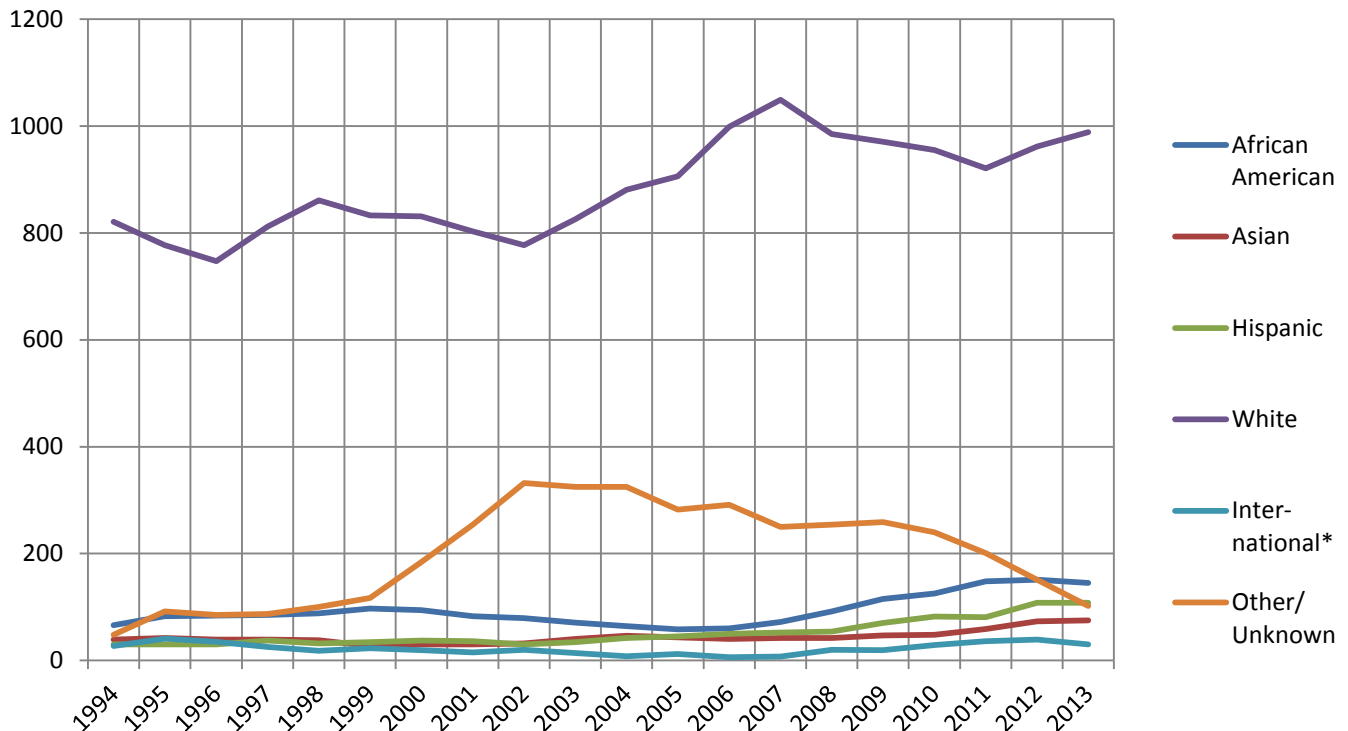
Program Enrollments	Full-Time Male	Part-Time Male	Total Male	Full-Time Female	Part-Time Female	Total Female	Total Male and Female
Arts Administration	3	0	3	18	11	29	32
Digital Arts	3	5	8	2	5	7	15
Historic Preservation	0	9	9	0	22	22	31
Education M.Ed.	2	65	67	13	245	258	325
Creative Nonfiction	7	0	7	23	0	23	30
Teaching M.A.T.	7	26	33	29	52	81	114
Cultural Sustainability	3	4	7	17	16	33	40
Post-Baccalaureate Certificate, Prof. Dev.	0	8	8	0	31	31	39
Post-Baccalaureate Certificate, Premedical	14	0	14	20	0	20	34
Teachers Institute							
Graduate Certification			0	0	2	2	2
Undeclared Program			0	0	0	0	0
Total Graduate	39	117	156	122	384	506	662
Total Undergraduate	473	15	488	951	10	961	1449
Grand Total	512	132	644	1073	394	1467	2111
Program Enrollment Percentages	Full-Time Male	Part-Time Male	Total Male	Full-Time Female	Part-Time Female	Total Female	Total Male and Female
Arts Administration	9.4%	0.0%	9.4%	56.3%	34.4%	90.6%	100.0%
Historic Preservation	20.0%	33.3%	53.3%	13.3%	33.3%	46.7%	100.0%
Education M.Ed.	0.0%	29.0%	29.0%	0.0%	71.0%	71.0%	100.0%
Creative Nonfiction	0.6%	20.0%	20.6%	4.0%	75.4%	79.4%	100.0%
Teaching M.A.T.	23.3%	0.0%	23.3%	76.7%	0.0%	76.7%	100.0%
Cultural Sustainability	6.1%	22.8%	28.9%	25.4%	45.6%	71.1%	100.0%
Post-Baccalaureate Certificate, Teaching	7.5%	10.0%	17.5%	42.5%	40.0%	82.5%	100.0%
Post-Baccalaureate Certificate, Premedical	0.0%	20.5%	20.5%	0.0%	79.5%	79.5%	100.0%
Teachers Institute	41.2%	0.0%	41.2%	58.8%	0.0%	58.8%	100.0%
Undeclared Program							
Total Graduate	5.9%	17.7%	23.6%	18.4%	58.0%	76.4%	100.0%
Total Undergraduate	32.6%	1.0%	33.7%	65.6%	0.7%	66.3%	100.0%
Grand Total	24.3%	6.3%	30.5%	50.8%	18.7%	69.5%	100.0%

Undergraduate Headcount Enrollment by Ethnicity Fall 1994-2013

	African American	Asian	Hispanic	White	Inter-national*	Other/ Unknown	Total
1994	66	39	30	821	27	48	1031
1995	83	42	30	777	41	92	1065
1996	84	39	30	747	35	85	1020
1997	85	39	37	812	25	87	1085
1998	88	38	32	861	18	100	1137
1999	97	27	34	833	23	117	1131
2000	94	30	37	831	19	184	1195
2001	83	30	36	803	15	254	1221
2002	79	32	30	777	20	332	1270
2003	71	40	34	826	14	325	1310
2004	64	46	42	881	8	325	1366
2005	58	43	45	906	12	282	1346
2006	60	40	50	999	6	291	1446
2007	72	42	52	1049	7	250	1472
2008	92	42	54	985	20	254	1447
2009	115	47	70	971	19	259	1481
2010	125	48	82	955	29	240	1479
2011	148	59	81	921	36	201	1446
2012	151	73	108	962	39	151	1484
2013	145	75	108	989	30	102	1449

*Nonresident alien

Undergraduate Headcount Enrollment by Ethnicity, Fall 1994-2013

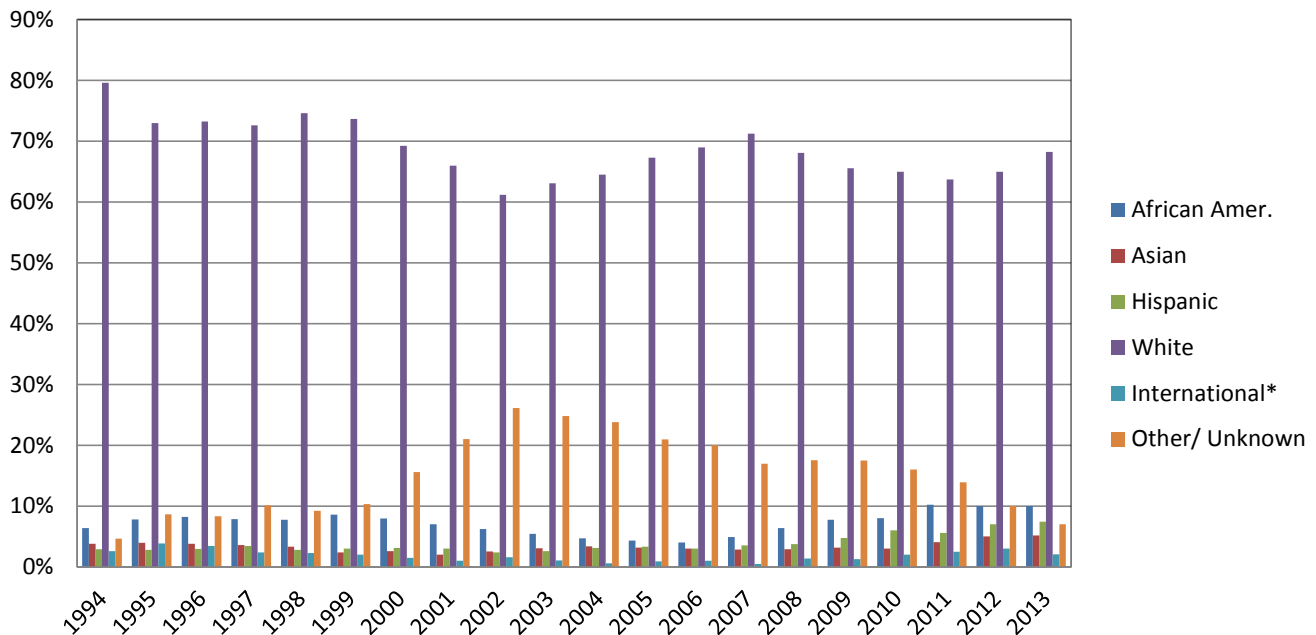


Undergraduate Percentage Headcount Enrollment by Ethnicity Fall 1994-2013

	African Amer.	Asian	Hispanic	White	International*	Other/ Unknown	Total
1994	6%	4%	3%	80%	3%	5%	100%
1995	8%	4%	3%	73%	4%	9%	100%
1996	8%	4%	3%	73%	3%	8%	100%
1997	8%	4%	3%	73%	2%	10%	100%
1998	8%	3%	3%	75%	2%	9%	100%
1999	9%	2%	3%	74%	2%	10%	100%
2000	8%	3%	3%	69%	2%	16%	100%
2001	7%	2%	3%	66%	1%	21%	100%
2002	6%	3%	2%	61%	2%	26%	100%
2003	5%	3%	3%	63%	1%	25%	100%
2004	5%	3%	3%	65%	1%	24%	100%
2005	4%	3%	3%	67%	1%	21%	100%
2006	4%	3%	3%	69%	1%	20%	100%
2007	5%	3%	4%	71%	1%	17%	100%
2008	6%	3%	4%	68%	1%	18%	100%
2009	8%	3%	5%	66%	1%	17%	100%
2010	8%	3%	6%	65%	2%	16%	100%
2011	10%	4%	6%	64%	2%	14%	100%
2012	10%	5%	7%	65%	3%	10%	100%
2013	10%	5%	7%	68%	2%	7%	100%

*Nonresident alien

Undergraduate Percentage Headcount Enrollment by Ethnicity: Fall 1994 - 2013



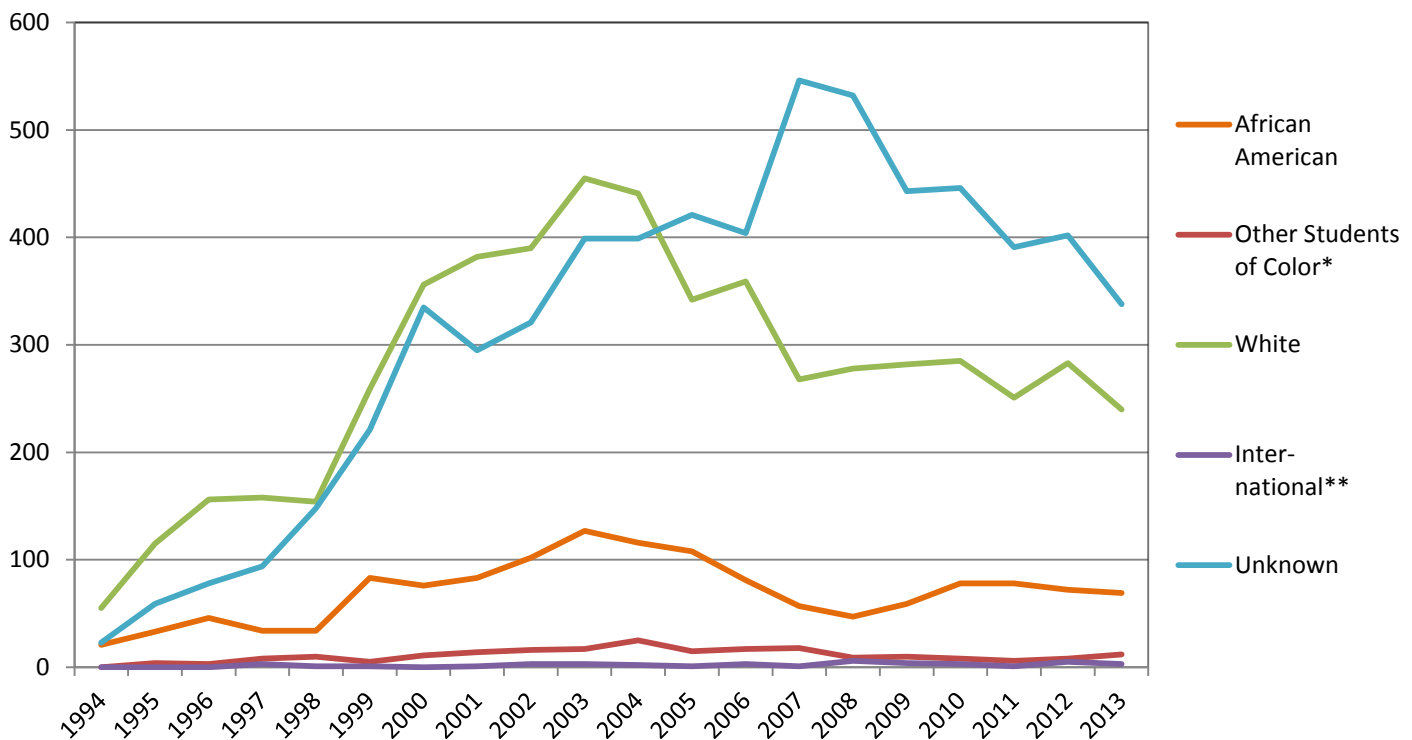
Graduate Headcount Enrollment by Ethnicity Fall 1994-2013

	African American	Other Students of Color*	White	Inter-national**	Unknown	Total
1994	21	0	55	0	23	99
1995	33	4	115	0	59	211
1996	46	3	156	0	78	283
1997	34	8	158	3	94	297
1998	34	10	154	1	148	347
1999	83	5	259	1	221	569
2000	76	11	356	0	335	778
2001	83	14	382	1	295	775
2002	102	16	390	3	321	832
2003	127	17	455	3	399	1001
2004	116	25	441	2	399	983
2005	108	15	342	1	421	887
2006	81	17	359	3	404	864
2007	57	18	268	1	546	890
2008	47	9	278	6	532	872
2009	59	10	282	4	443	798
2010	78	8	285	3	446	820
2011	78	6	251	1	391	727
2012	72	8	283	5	402	770
2013	69	12	240	3	338	662

*Includes Asian, Hispanic, and Native American.

**Nonresident alien

Graduate Headcount Enrollment by Ethnicity: Fall 1994-2013



Undergraduate Headcount by State of Residence and Full Time/Part Time Status, Fall 2013

State of Residence	Full-time	Part-time	Total	% Total
Alabama	8		8	0.6%
Alaska			0	
Arizona	5		5	0.3%
Arkansas	3		3	0.2%
California	89	1	90	6.2%
Colorado	14		14	1.0%
Connecticut	58	1	59	4.1%
Delaware	14		14	1.0%
District of Columbia	14		14	1.0%
Florida	19		19	1.3%
Georgia	14		14	1.0%
Hawaii	1		1	0.1%
Idaho			0	0.0%
Illinois	11		11	0.8%
Indiana			0	0.0%
Iowa	2		2	
Kansas	2		2	0.1%
Kentucky	2		2	0.1%
Louisiana	5		5	0.3%
Maine	37		37	2.6%
Maryland	345	21	366	25.3%
Massachusetts	87		87	6.0%
Michigan	8		8	0.6%
Minnesota	7		7	0.5%
Mississippi			0	
Missouri	6		6	0.4%
Montana	1		1	0.1%
Nebraska	1		1	
Nevada	2		2	0.1%
New Hampshire	21		21	1.4%
New Jersey	110		110	7.6%
New Mexico	5		5	0.3%
New York	166	2	168	11.6%
North Carolina	13		13	0.9%
North Dakota	1		1	
Ohio	13		13	0.9%
Oklahoma			0	0.0%
Oregon	18		18	1.2%
Pennsylvania	145		145	10.0%
Rhode Island	4		4	0.3%
South Carolina	2		2	0.1%
South Dakota			0	
Tennessee	11		11	0.8%
Texas	38		38	2.6%
Utah	1		1	0.1%
Vermont	13		13	0.9%
Virginia	35		35	2.4%
Washington	17		17	1.2%
West Virginia	5		5	0.3%
Wisconsin	3		3	0.2%
Wyoming	1		1	0.1%
American Samoa			0	
Guam			0	
Canal Zone			0	
Puerto Rico	6		6	0.4%
Trust Terr. Pacific Island			0	
Virgin Islands			0	0.0%
AE*	2		2	0.1%
Foreign/nonresident alien	30		30	2.1%
Unknown State, U.S.	9		9	
Total	1424	25	1449	100%

* AE stands for military base.

Graduate Headcount by State of Residence and Full Time/Part Time Status - Fall 2013

State of Residence	Full-Time	Part-Time	Total	%Total
Alabama				
Alaska		1	1	0.2%
Arizona	1	1	2	0.3%
Arkansas		1	1	0.2%
California	3	5	8	1.2%
Colorado	2		2	0.3%
Connecticut	1	2	3	0.5%
Delaware				
District of Columbia	6	3	9	1.4%
Florida	8	2	10	1.5%
Georgia	1	1	2	0.3%
Hawaii				
Idaho				
Illinois	5	1	6	0.9%
Indiana		1	1	0.2%
Iowa				
Kansas				
Kentucky				
Louisiana				
Maine				
Maryland	99	438	537	81.1%
Massachusetts	2	3	5	0.8%
Michigan				
Minnesota	1	1	2	0.3%
Mississippi				
Missouri				
Montana				
Nebraska				
Nevada		1	1	0.2%
New Hampshire				
New Jersey	1	1	2	0.3%
New Mexico		1	1	0.2%
New York	5	5	10	1.5%
North Carolina	4	2	6	0.9%
North Dakota				
Ohio	1		1	0.2%
Oklahoma				
Oregon		1	1	0.2%
Pennsylvania	7	11	18	2.7%
Rhode Island	1		1	0.2%
South Carolina	1	1	2	0.3%
South Dakota				
Tennessee	3	1	4	0.6%
Texas	1	2	3	0.5%
Utah				
Vermont				
Virginia	4	6	10	1.5%
Washington	1		1	0.2%
West Virginia		1	1	0.2%
Wisconsin		2	2	0.3%
Wyoming		1	1	0.2%
American Samoa				
Guam				
Canal Zone				
Puerto Rico		1	1	0.2%
Trust Terr. Pacific Island				
Virgin Islands				
AE*		2	2	0.3%
Foreign/nonresident alien	1	2	3	0.5%
Unknown State, U.S.	2		2	0.3%
Unknown Origin				
Total	161	501	662	100.0%

* AE stands for military base.

First Time Freshman Headcount by State of Residence and Full Time/Part Time Status - Fall 2013

State of Residence	Full-Time	Part-Time	Total	%Total
Alabama	2		2	0.5%
Alaska			0	0.0%
Arizona	1		1	0.2%
Arkansas			0	0.0%
California	38		38	9.5%
Colorado	5		5	1.2%
Connecticut	11		11	2.7%
Delaware	5		5	1.2%
District of Columbia	6		6	1.5%
Florida	5		5	1.2%
Georgia	4		4	1.0%
Hawaii			0	0.0%
Idaho			0	0.0%
Illinois	3		3	0.7%
Indiana			0	0.0%
Iowa	1		1	0.2%
Kansas	1		1	0.2%
Kentucky			0	0.0%
Louisiana	2		2	0.5%
Maine	11		11	2.7%
Maryland	74		74	18.5%
Massachusetts	21		21	5.2%
Michigan	4		4	1.0%
Minnesota			0	0.0%
Mississippi			0	0.0%
Missouri	3		3	0.7%
Montana			0	0.0%
Nebraska	1		1	0.2%
Nevada	2		2	0.5%
New Hampshire	6		6	1.5%
New Jersey	27		27	6.7%
New Mexico	1		1	0.2%
New York	48		48	12.0%
North Carolina	4		4	1.0%
North Dakota	1		1	0.2%
Ohio	3		3	0.7%
Oklahoma			0	0.0%
Oregon	9		9	2.2%
Pennsylvania	42		42	10.5%
Rhode Island	3		3	0.7%
South Carolina	1		1	0.2%
South Dakota			0	0.0%
Tennessee	6		6	1.5%
Texas	12		12	3.0%
Utah			0	0.0%
Vermont	3		3	0.7%
Virginia	13		13	3.2%
Washington	9		9	2.2%
West Virginia	1		1	0.2%
Wisconsin	2		2	0.5%
Wyoming			0	0.0%
American Samoa			0	0.0%
Guam			0	0.0%
Canal Zone			0	0.0%
Puerto Rico			0	0.0%
Trust Terr. Pacific Island			0	0.0%
Virgin Islands			0	0.0%
AE*	1		1	0.2%
Foreign/nonresident alien	6		6	1.5%
Unknown State, U.S.	3		3	0.7%
Total	401	0	401	100%

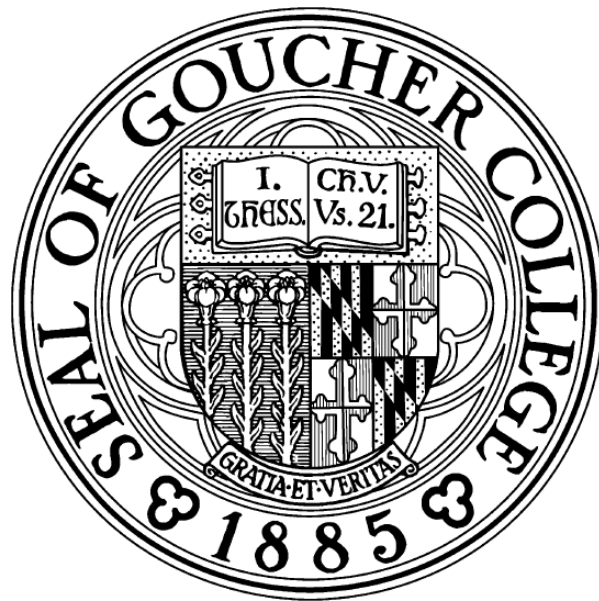
* AE stands for military base.

First-Time, First-Year Freshman Cohorts Profile: Fall 2004-2013

	Fall 2004	Fall 2005	Fall 2006	Fall 2007	Fall 2008	Fall 2009	Fall 2010	Fall 2011	Fall 2012	Fall 2013
Cohort Size (n)	401	340	451	399	360	400	391	367	410	401
Gender										
% Female	67.3%	63.8%	67.4%	69.4%	72.8%	69.5%	66.5%	65.4%	69.3%	67.8%
% Male	32.7%	36.2%	32.6%	30.6%	27.2%	30.5%	33.5%	34.6%	30.7%	32.2%
Ethnicity										
African American	3.2%	4.7%	4.7%	5.8%	8.3%	8.5%	7.7%	12.8%	13.7%	9.0%
Asian	3.5%	3.8%	2.4%	3.3%	2.2%	4.3%	2.6%	6.0%	6.1%	6.0%
Hispanic	3.5%	3.8%	3.1%	3.8%	4.7%	6.8%	6.1%	6.0%	11.5%	7.7%
Native American	0.3%	0.9%	0.7%	0.5%	0.0%	1.5%	0.8%	1.6%	1.2%	1.2%
White	70.3%	70.6%	71.6%	75.2%	62.8%	64.3%	69.8%	66.5%	61.7%	69.8%
International	0.0%	1.2%	0.4%	0.8%	2.2%	0.8%	3.1%	2.5%	1.5%	1.5%
Other	0.0%	0.3%	1.3%	1.5%	0.0%	0.0%	0.3%	0.3%	0.2%	0.0%
Unknown	19.2%	14.7%	15.7%	9.3%	19.7%	14.0%	9.7%	4.4%	4.1%	4.7%
Total	100.0%	100.0%	100.0%	100.0%	100.0%	100.0%	100.0%	100.0%	100.0%	100.0%
Academic										
Mean SAT	1188	1208	1197	1169	1141	1167	1146	1139	1123	1149
Median SAT	1190	1200	1200	1160	1160	1170	1160	1160	1140	1155
25th Percentile SAT	1100	1100	1110	1070	1020	1070	1050	1020	1005	1030
75th Percentile SAT	1270	1300	1280	1280	1280	1280	1260	1250	1240	1265
Residence in Dorms										
Percent Residents	95.0%	96.5%	96.9%	97.2%	96.4%	96.0%	99.0%	97.0%	98.0%	96.0%
Residence in Maryland										
Percent Maryland	27.2%	23.1%	23.4%	23.3%	23.6%	23.9%	18.9%	22.1%	24.9%	18.5%
Admissions										
Total Actionable Applicants	2870	2976	3171	3563	4077	3651	3587	3763	3615	3466
Admits	1946	1991	2220	2361	2591	2664	2611	2764	2593	2505
Acceptance Rate (Selectivity)	67.8%	66.9%	70.0%	66.3%	63.6%	73.0%	72.8%	73.5%	71.7%	72.3%
Enrolled*	401	340	451	399	360	400	391	367	410	401
Enrolled Yield	20.6%	17.1%	20.3%	16.9%	13.9%	15.0%	15.0%	13.3%	15.8%	16.0%

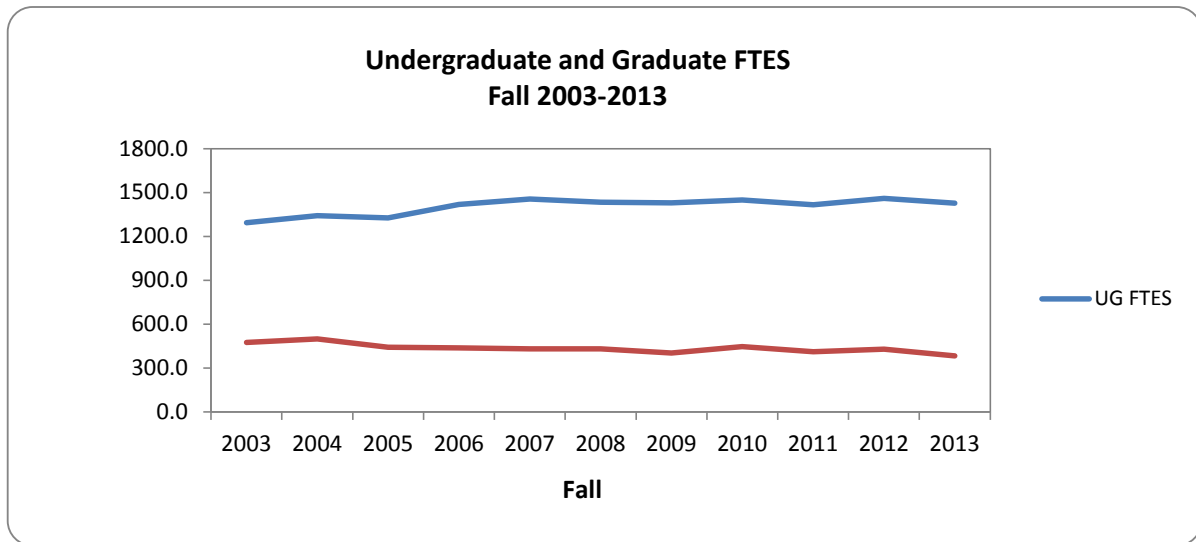
SAT = SAT Verbal + SAT Math

Full-Time Equivalent Students (FTES)



Undergraduate and Graduate FTES Fall 2003-2013

Year	UG FTES	Graduate FTES	Total FTES
2003	1292.7	476.0	1768.7
2004	1342.2	499.2	1841.3
2005	1327.0	443.3	1770.3
2006	1419.0	437.1	1856.1
2007	1456.5	430.4	1886.8
2008	1434.1	431.6	1865.7
2009	1429.0	402.3	1831.3
2010	1450.1	447.6	1897.7
2011	1415.2	411.9	1827.1
2012	1459.2	428.3	1887.5
2013	1427.9	383.5	1811.4



FTES=Full-Time Equivalent Students

Undergraduate FTES= Full-time students plus all part-time undergraduate credits divided by 12.

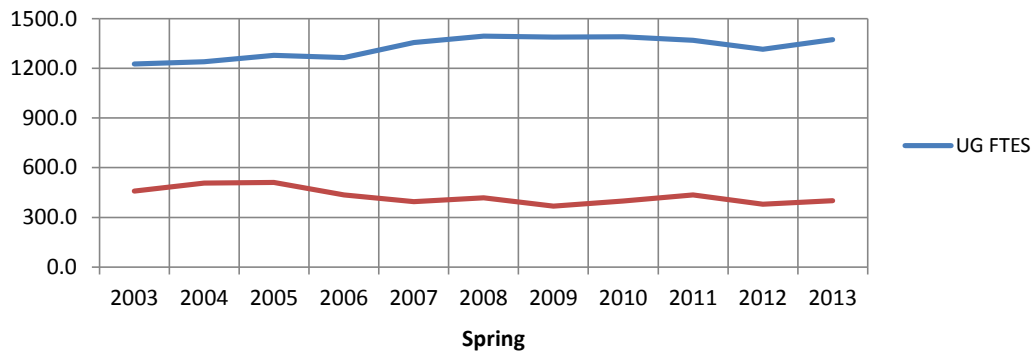
Graduate FTES= Full-time graduate students plus all part-time graduate credits divided by 9.

Excludes non Goucher study abroad students

Undergraduate and Graduate FTES Spring 2003-2013

Year	UG FTES	Graduate FTES	Total FTES
2003	1225.8	458.2	1684.1
2004	1239.3	507.6	1746.9
2005	1279.8	511.7	1791.6
2006	1265.8	435.0	1700.8
2007	1355.3	395.2	1750.5
2008	1394.2	417.3	1811.5
2009	1389.1	368.3	1757.4
2010	1391.5	398.3	1789.8
2011	1370.0	434.6	1804.6
2012	1316.0	379.3	1695.3
2013	1373.6	401.6	1775.2

Undergraduate and Graduate FTES Spring 2003-2013



FTES=Full-Time Equivalent Students

Undergraduate FTES= Full-time students plus all part-time undergraduate credits divided by 12.

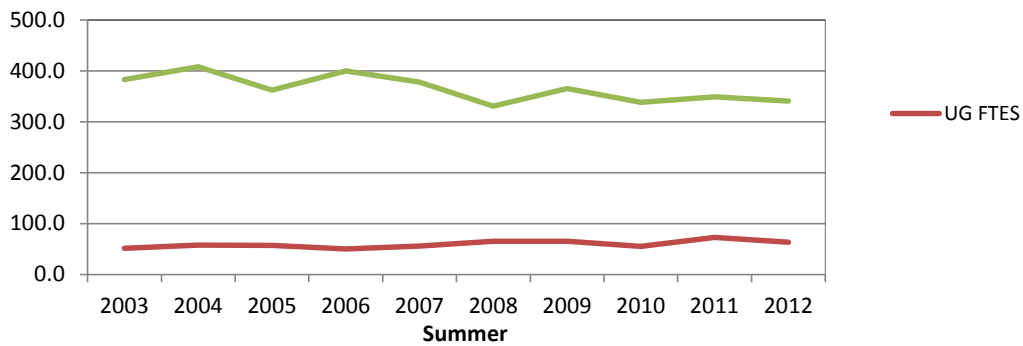
Graduate FTES= Full-time graduate students plus all part-time graduate credits divided by 9.

Excludes non Goucher study abroad students

Undergraduate and Graduate FTES Summer 2003-2013

Year	UG FTES	Graduate FTES	Total FTES
2003	51.3	383.1	434.4
2004	57.6	408.2	465.8
2005	56.9	362.0	418.9
2006	50.5	400.1	450.6
2007	56.1	377.8	433.9
2008	65.3	330.7	396.0
2009	65.4	365.0	430.4
2010	55.2	338.5	393.7
2011	73.1	349.2	422.3
2012	63.4	340.6	404.0
2013	44.6	354.4	399.0

Undergraduate and Graduate FTES Summer 2003-2013

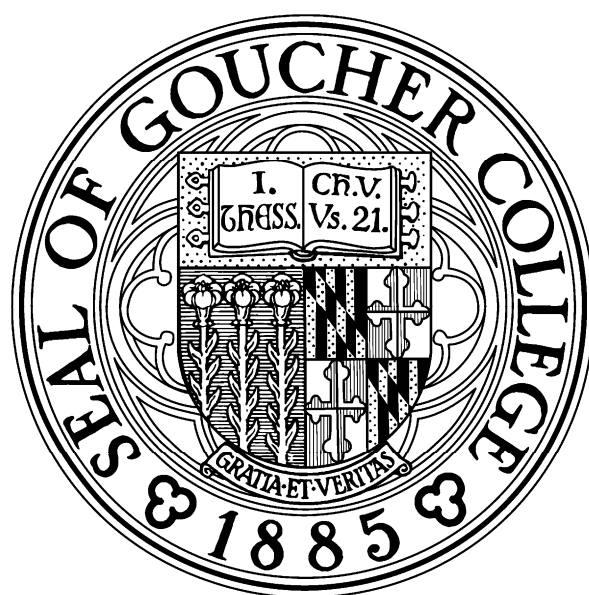


FTES=Full-Time Equivalent Students

Undergraduate FTES= Full-time students plus all part-time undergraduate credits divided by 12.

Graduate FTES= Full-time graduate students plus all part-time graduate credits divided by 9.

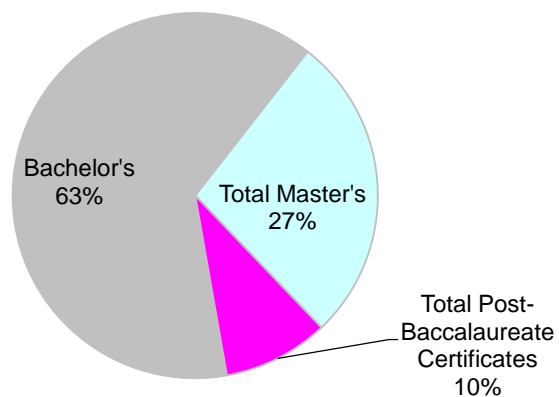
Degree Data



Degrees and Certificates Awarded by Program, Fiscal Year 2013

Program	Number	Percentage
Bachelor's	311	63.3%
Master's		
Education (M. Ed.)	52	10.6%
Teaching (M.A.T.)	39	7.9%
Arts Administration	10	2.0%
Historic Preservation	4	0.8%
Cultural Sustainability	8	1.7%
Creative Nonfiction	21	4.3%
Total Master's	134	27.3%
Post-Baccalaureate Certificates		
Premedical	30	6.1%
Education and Teaching	16	3.3%
Total Post-Baccalaureate Certificates	46	9.4%
Total Degrees and Certificates	491	100.0%

Degrees and Certificates Awarded by Program
Fiscal Year 2013

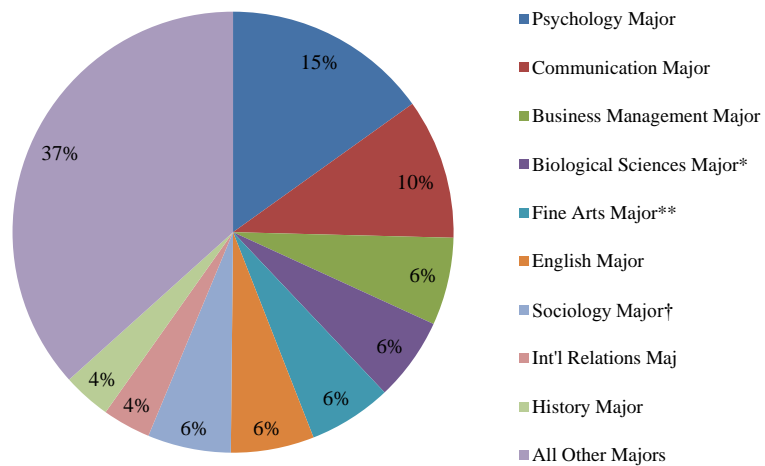


Fiscal Year: July 1, 2012, to June 30, 2013

**Bachelor's Degree Recipients in Disciplines with the Greatest
Number of First Majors
Fiscal Year 2013**

Majors	Graduates	
	No.	%
Psychology Major	47	15%
Communication Major	32	10%
Business Management Major	20	6%
Biological Sciences Major*	19	6%
Fine Arts Major**	19	6%
English Major	19	6%
Sociology Major†	19	6%
Int'l Relations Maj	11	4%
History Major	11	4%
All Other Majors	114	37%
Total Graduates	311	100%

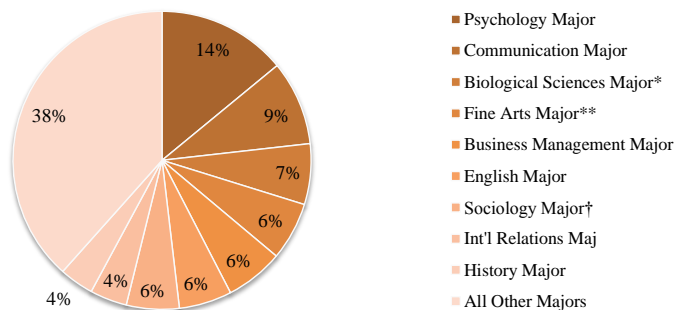
**B.A. Recipients in Disciplines with Greatest number of First
Majors, FY 2013**



**Bachelor's Degree Recipients in Disciplines with the Greatest
Total Number of First and Second Majors
Fiscal Year 2013**

Majors	Graduates			
	First	Second	Total No.	%
Psychology Major	47	2	49	14%
Communication Major	32	0	32	9%
Biological Sciences Major*	19	4	23	7%
Fine Arts Major**	19	3	22	6%
Business Management Major	20	2	22	6%
English Major	19	1	20	6%
Sociology Major†	19	1	20	6%
Int'l Relations Maj	11	3	14	4%
History Major	11	2	13	4%
All Other Majors	114	20	134	38%
Total Majors	311	38	349	100%

**Disciplines with Greatest Total Number of BA
Recipients
(first and second majors)**



* The Biological Sciences Major includes both Biology Majors and Biochemistry & Molecular Biology Majors.

† The Sociology Major includes both Sociology Majors and Sociology & Anthropology Majors

** Fine Art includes Art and Art History

**Bachelor's Degree Recipients by Primary Major
Fiscal Years 2004-2013**

Headcount for Graduates from July 1 of Prior Year to June 30 of Column Year

Major	2004	2005	2006	2007	2008	2009	2010	2011	2012	2013
American Studies	1	1	1	4	1	1	2	2	2	3
Area Studies										0
Biological Sciences†	14	14	18	20	13	21	12	25	18	19
Chemistry	9	8	7	11	8	5	2	7	8	6
Cognitive Studies										0
Communication	22	25	28	22	39	27	43	19	30	32
Computer Science	4	5	2	4	3	3	1	3	5	2
Creative Arts	0	0	0	0	0	0	0	0	0	0
Dance	10	13	17	20	12	11	16	18	17	9
Economics	3	3	2	1	2	7	9	9	1	4
Education‡	14	8	9	8	13	4	7	8	9	7
English	25	31	19	24	36	28	35	28	20	19
Environmental Studies ⁱ								1	0	11
European Studies										0
Fine Arts*	15	14	18	18	15	20	25	18	15	19
French	4	1	4	3	5	1	4	9	4	11
Historic Preservation	2	2	1	1	1	3	0	0	0	0
History	10	9	8	14	11	18	10	14	15	11
Individualized Major	2	6	4	1	1	3	3	1	1	2
International Relations	6	4	5	5	7	8	12	16	6	11
Int'l./Intlcult. Studies	6	8	4							
Management	17	23	17	19	25	14	11	12	12	20
Mathematics	3	3	8	3	3	5	2	3	0	4
Music	7	6	6	5	6	8	5	6	6	5
Peace Studies ⁱⁱ				6	9	6	19	12	8	11
Philosophy	6	5	6	4	4	5	11	12	7	8
Physics	0	2	3	2	1	2	2	4	1	1
Political Science	12	14	15	8	17	4	10	11	12	6
Prelegal Studies										
Psychology	51	41	37	51	39	39	43	48	35	47
Religion	3	3	2	0	2	3	7	4	1	5
Russian	0	1	1	0	2	2	1	2	1	5
Sociology ⁱⁱⁱ	16	9	13	17	19	17	21	19	16	19
Studio Art*										2
Spanish	2	8	4	1	9	5	8	10	12	6
Theatre	8	4	11	4	9	7	8	4	8	4
Women's Studies	0	3	5	1	6	3	2	6	3	2
Total B.A. Recipients	272	274	275	277	318	280	331	331	273	311

* Fine Art includes Art and Art History

† The Biological Sciences Major includes both Biology and Biochemistry & Molecular Biology majors, beginning Fiscal Year 2012.

‡ The Education Major includes both Education and Special Education majors.

ⁱ The Environmental Studies Program enrolled its first majors in Fiscal Year 2011.

ⁱⁱ The Peace Studies Program enrolled its first majors in Fiscal Year 2005.

ⁱⁱⁱ The Sociology Major includes both Sociology and Sociology & Anthropology majors.

**Bachelor's Degree Recipients by Division (by Primary Major)
Fiscal Years 2004-2013**

Headcount for Graduates from July 1 of Prior Year to June 30 of Column Year

Program	2004	2005	2006	2007	2008	2009	2010	2011	2012	2013
Division 1: Humanities										
Communication	22	25	28	22	39	27	43	19	30	32
English	25	31	19	24	36	28	35	28	20	19
French	4	1	4	3	5	1	4	9	4	11
Historic Preservation	2	2	1	1	1	3	0	0	0	0
History	10	9	8	14	11	18	10	14	15	11
Philosophy	6	5	6	4	4	5	11	12	7	8
Religion	3	3	2	0	2	3	7	4	1	5
Russian	0	1	1	0	2	2	1	2	1	5
Spanish	2	8	4	1	9	5	8	10	12	6
All Humanities	74	85	73	69	109	92	119	98	90	97
Percent of Total Graduates	27%	31%	27%	25%	34%	33%	36%	30%	33%	31%
Division 2: Social Sciences										
Economics	3	3	2	1	2	7	9	9	1	4
Education [†]	14	8	9	8	13	4	7	8	9	7
International Relations	6	4	5	5	7	8	12	16	6	11
Management	17	23	17	19	25	14	11	12	12	20
Political Science	12	14	15	8	17	4	10	11	12	6
Sociology ⁱⁱⁱ	16	9	13	17	19	17	21	19	16	19
All Social Sciences	68	61	61	58	83	54	70	75	56	67
Percent of Total Graduates	25%	22%	22%	21%	26%	19%	21%	23%	21%	22%
Division 3: Natural Sciences										
Biological Sciences [†]	14	14	18	20	13	21	12	25	18	19
Chemistry	9	8	7	11	8	5	2	7	8	6
Computer Science	4	5	2	4	3	3	1	3	5	2
Mathematics	3	3	8	3	3	5	2	3	0	4
Physics	0	2	3	2	1	2	2	4	1	1
Psychology	51	41	37	51	39	39	43	48	35	47
All Nat. Sciences and Math	81	73	75	91	67	75	62	90	67	79
Percent of Total Graduates	30%	27%	27%	33%	21%	27%	19%	27%	25%	25%
Division 4: Arts										
Art History [*]	0	0	0	0	0	0	0	0	2	6
Dance	10	13	17	20	12	11	16	18	17	9
Fine Arts [*]	15	14	18	18	15	20	25	18	0	13
Music	7	6	6	5	6	8	5	6	6	5
Studio Art [*]	0	0	0	0	0	0	0	0	13	2
Theatre	8	4	11	4	9	7	8	4	8	4
All Arts	40	37	52	47	42	46	54	46	46	39
Percent of Total Graduates	15%	14%	19%	17%	13%	16%	16%	14%	17%	13%
Division 5: Interdisciplinary Studies										
American Studies	1	1	1	4	1	1	2	2	2	3
Environmental Studies ⁱ	0	0	0	0	0	0	0	1	0	11
European Studies	0	0	0	0	0	0	0	0	0	0
Individualized Major	2	6	4	1	1	3	3	1	1	2
Int'l./Intercultural Studies	6	8	4	0	0	0	0	0	0	0
Peace Studies ⁱⁱ	0	0	0	6	9	6	19	12	8	11
Prelegal Studies	0	0	0	0	0	0	0	0	0	0
Women's Studies	0	3	5	1	6	3	2	6	3	2
All Interdisciplinary Studies	9	18	14	12	17	13	26	22	14	29
Percent of Total Graduates	3%	7%	5%	4%	5%	5%	8%	7%	5%	9%
Total B.A. Recipients	272	274	275	277	318	280	331	331	273	311
	100%	100%	100%	100%	100%	100%	100%	100%	100%	100%

* Art History and Studio Art are considered to be two separate majors, beginning in Fiscal Year 2012. They were previously listed under the category of Fine Arts in this Table

† The Biological Sciences Major includes both Biology and Biochemistry & Molecular Biology majors, beginning Fiscal Year 2012.

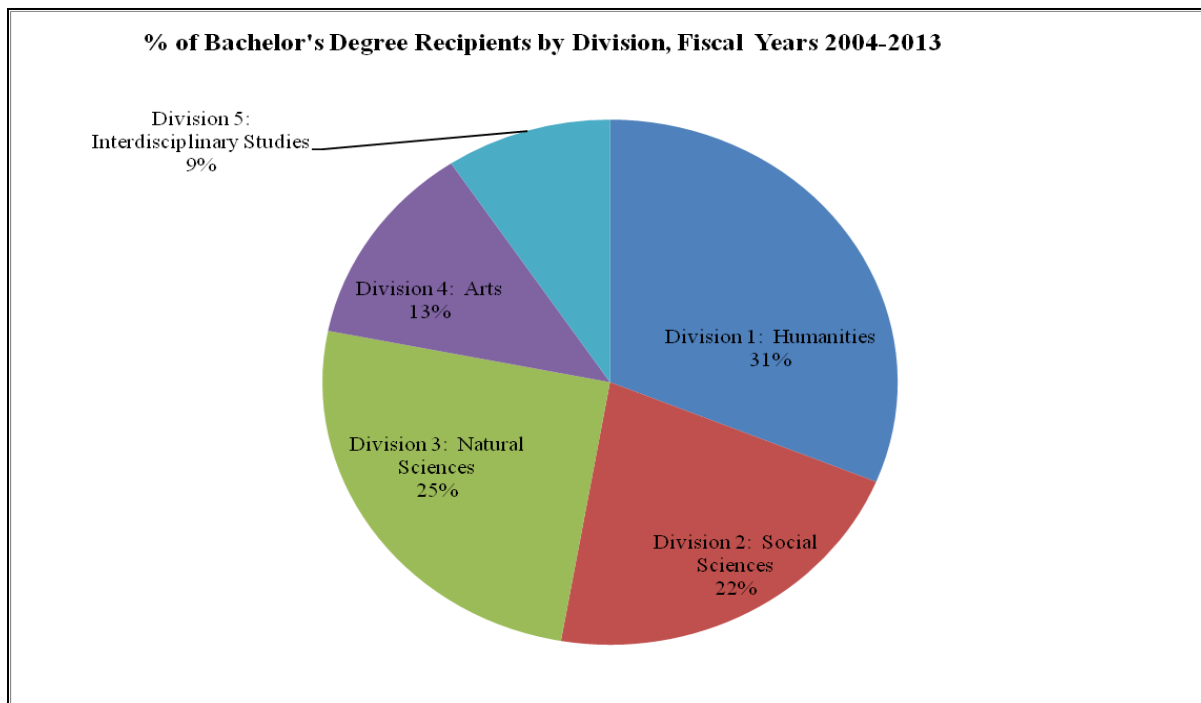
‡ The Education Major includes both Education and Special Education majors.

ⁱ The Environmental Studies Program enrolled its first majors in Fiscal Year 2011.

ⁱⁱ The Peace Studies Program enrolled its first majors in Fiscal Year 2005.

ⁱⁱⁱ The Sociology Major includes both Sociology and Sociology & Anthropology majors.

Percent of Bachelor's Degree Recipients by Division (by Primary Major): Fiscal Year 2013



Graduate Degrees and Certificates Awarded

Fiscal Years 2004-2013

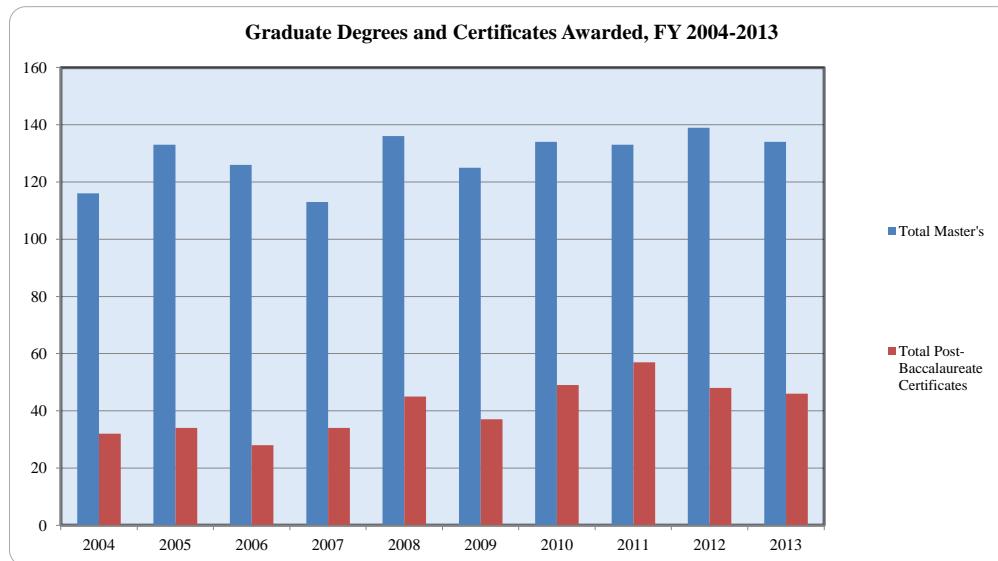
Degrees and certificates awarded for the period from July 1 of Prior Year to June 30 of Column Year

Program	2004	2005	2006	2007	2008	2009	2010	2011	2012	2013
Master's										
Arts Administration	13	7	10	10	12	12	8	11	7	10
Historic Preservation	14	9	6	11	8	6	12	7	10	4
Education (M.Ed.)	44	70	54	47	60	53	59	58	53	52
Cultural Sustainability	0	0	0	0	0	0	0	0	0	8
Creative Nonfiction	18	34	23	14	26	15	23	16	20	21
Teaching (M.A.T.)	27	13	33	31	30	39	32	41	49	39
Post-Baccalaureate Certificates										
Education and Teaching	2	3	3	6	14	9	22	26	18	16
Premedical	30	31	25	28	31	28	27	31	30	30

	2004	2005	2006	2007	2008	2009	2010	2011	2012	2013
Total Master's	116	133	126	113	136	125	134	133	139	134
Total Post-Baccalaureate Certificates	32	34	28	34	45	37	49	57	48	46

Master's as Percentage of Total Graduate Awards	78%	80%	82%	77%	75%	77%	73%	70%	74%	74%
Post-Baccalaureate Certificates as Percentage of Total Graduate Awards	22%	20%	18%	23%	25%	23%	27%	30%	26%	26%

Total Graduate Degrees and Certificates	148	167	154	147	181	162	183	190	187	180
--	------------	------------	------------	------------	------------	------------	------------	------------	------------	------------



Bachelor's Degrees by Primary Major and Gender
Fiscal Year 2013

Major	Male		Female		Total
	Headcount	%	Headcount	%	
American Studies	1	33%	2	67%	3
Art History*	1	17%	5	83%	6
Biological Sciences†	5	26%	14	74%	19
Chemistry	5	83%	1	17%	6
Communication	14	44%	18	56%	32
Computer Science	1	50%	1	50%	2
Dance	0	0%	9	100%	9
Economics	3	75%	1	25%	4
Education‡	1	14%	6	86%	7
English	3	16%	16	84%	19
Environmental Studies	0	0%	11	100%	11
French	0	0%	11	100%	11
History	5	45%	6	55%	11
Individualized Major	0	0%	2	100%	2
International Relations	5	45%	6	55%	11
Management	11	55%	9	45%	20
Mathematics	1	25%	3	75%	4
Music	3	60%	2	40%	5
Peace Studies	2	18%	9	82%	11
Philosophy	5	63%	3	38%	8
Physics	1	100%	0	0%	1
Political Science	3	50%	3	50%	6
Psychology	12	26%	35	74%	47
Religion	2	40%	3	60%	5
Russian	1	20%	4	80%	5
Sociology ^j	2	11%	17	89%	19
Spanish	1	17%	5	83%	6
Studio Art*	2	13%	13	87%	15
Theatre	1	25%	3	75%	4
Women's Studies	0	0%	2	100%	2
Total	91		220		311

* The Fine Arts Major has become two separate majors, Art History and Studio Art, in Fiscal Year 2012

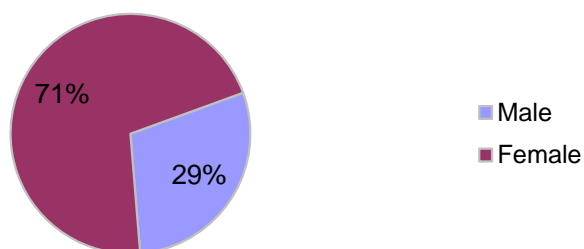
† The Biological Sciences Major includes both Biology and Biochemistry & Molecular Biology majors, b

‡ The Education Major includes both the Education Major and the Special Education major

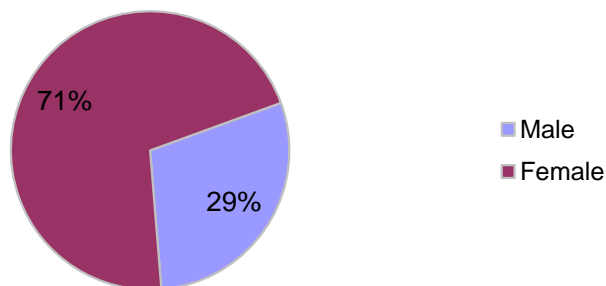
Degrees and Certificates Awarded by Program and Gender, Fiscal Year 2013

Program	Number Awarded			Percentage Awarded		
	Male	Female	Total	Male	Female	Total
Bachelor's	91	220	311	29%	71%	100%
Master's						
Arts Administration	0	10	10	0%	100%	100%
Historic Preservation	1	3	4	25%	75%	100%
Education (M.Ed.)	14	38	52	27%	73%	100%
Cultural Sustainability	0	8	8		100%	100%
Creative Nonfiction	7	14	21	33%	67%	100%
Teaching (M.A.T.)	7	32	39	18%	82%	100%
Total Master's	29	105	134	22%	78%	100%
Post-Baccalaureate Certificates						
Education and Teaching	4	12	16	25%	75%	100%
Premedical	17	13	30	57%	43%	100%
Total Post-Baccalaureate Certificates	21	25	46	46%	54%	100%
Total by Gender	141	350	491	29%	71%	100%

Bachelor's Degree Recipients by Program and Gender: Fiscal Year 2013



Master's Degree Recipients by Gender Fiscal Year 2013



Degrees and Certificates Awarded by Ethnicity, Fiscal Year 2013

Degree	African American	Native American	Asian	Hispanic	White	International*	Two or more races	Other/ Unknown	Total
Total Bachelor's	25	1	5	17	188	6	13	56	311
Percentage Bachelor's	8%	0%	2%	5%	60%	2%	4%	18%	100%

Master's									
Arts Administration	1				4			5	10
Historic Preservation					4				4
Education (M.Ed.)	10				28			14	52
Cultural Sustainability	1				3			4	8
Creative Nonfiction	2				5			14	21
Teaching (M.A.T.)	4			1	18			16	39
Total Master's	18			1	62			53	134
Percentage Total Master's	13%			1%	46%			40%	100%

Post-Baccalaureate Certificates									
Education and Teaching	4				7			5	16
Premedical					5			25	30
Total Post-Baccalaureate Certificates	4				12			30	46
Percentage Total Certificates	9%				26%			65%	100%

									0
Total Degrees and Certificates	47	1	5	18	262	6	13	139	491
Percentage of Total Degrees and Certificates	10%	0%	1%	4%	53%	1%	3%	28%	100%

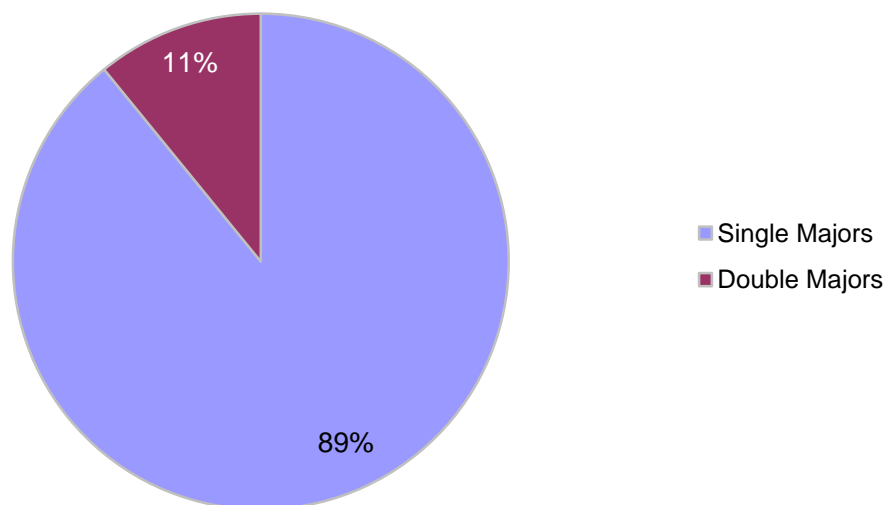
*Nonresident alien

Fiscal Year: July 1, 2012, to June 30, 2013

**Bachelor's Degree Recipients by Single and Double Majors
Fiscal Year 2013**

	Single Majors	Double Majors	Total
Number of Single, Double Majors	311	38	349
Percentage of Single, Double Majors	89.1%	10.9%	100.0%

**Bachelor's Degree Recipients Single and Double Majors
Fiscal Year 2013**



**Bachelor's Degree Recipients: Secondary Majors by
Gender
Fiscal Year 2013**

Second Major	Male	Female	Total
American Studies Maj	1	1	2
Fine Arts Major**	1	2	3
Biological Sciences Major*	1	3	4
Business Mgt Major	1	1	2
Chemistry Major	1	0	1
ComputerScienceMajor	1	0	1
Dance Major	0	3	3
Economics Major	0	1	1
English Major	0	1	1
French Major	0	1	1
History Major	1	1	2
Indiv-InterdiscMajor	1	0	1
Int'l Relations Maj	0	3	3
Mathematics Major	0	1	1
Peace Studies Major	0	1	1
Philosophy Major	1	2	3
Poli-Sci Major	0	2	2
Psychology Major	0	2	2
Religion Major	0	1	1
Sociology Major†	0	1	1
Spanish Major	0	2	2
Total	9	29	38

* The Biological Sciences Major includes both Biology Majors and Biochemistry & Molecular Biology Majors.

† The Sociology Major includes both Sociology Majors and Sociology & Anthropology Majors

** The Fine Arts Major includes both Art and Art History Majors

**Bachelor's Degree Recipients with More than One Major
By Ethnicity and Gender
Fiscal Year 2013**

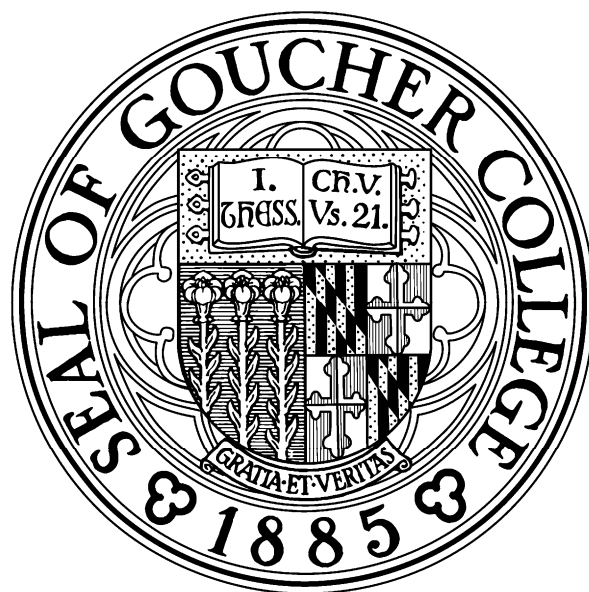
	African American	Asian	Hispanic	White	Unknown	International (Non-resident alien)	Total
Male	0	1	0	7	1	0	9
Female	2	0	3	18	6	0	29
Total	2	1	3	25	7	0	38
Percentage	5.3%	2.6%	7.9%	65.8%	18.4%	0.0%	100.0%

Bachelor's Degree Recipients by Minors, FY 2013

Anthropology Minor	2
Art Minor*	15
Bio Sciences Minor	2
Business Mgt Minor	6
Chemistry Minor	1
Cog Studies Minor	7
Communication Minor	6
Dance Minor	1
Economics Minor	0
Education Minor	3
English Minor	0
Enviro Studies Minor	2
French Minor	1
German Minor	2
Hist Preservat Min	1
History Minor	7
Inat'l Relations Min	1
Interprt Culture Min	1
Judaic Studies Minor	3
LatAmStudiesMinor	4
Mathematics Minor	2
Music Minor	1
Peace Studies Minor	6
Philosophy Minor	4
Physics Minor	1
Poli-Sci Minor	0
Psychology Minor	8
Religion Minor	1
Russian Minor	1
Sociology Minor	1
Spanish Minor	6
Theatre Minor	0
Womens Studies Minor	1
Total with Minors	97
Total B.A. Degree Recipients	311

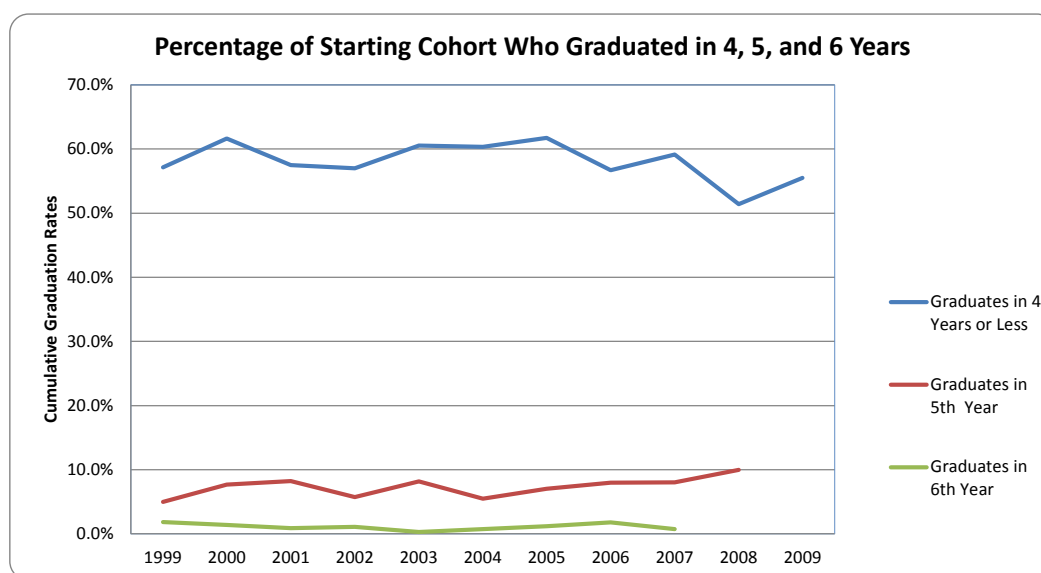
*The Art minor includes Art, Art History, and Studio Art minors

Graduation Rate and Retention Rate Data



**Graduation Rates after 4, 5, and 6 Years
Entering Full-Time Freshmen Cohorts of 1999-2009*****

Cohort*	Size on Entry	Graduates in 4 Years or Less		Graduates in 5th Year		Graduates in 6th Year		Cumulative Graduates in 6 Years	
		No.	%	No.	%	No.	%	Total No.	Total %
1999	322	184	57.1%	16	5.0%	6	1.9%	206	64.0%
2000	365	225	61.6%	28	7.7%	5	1.4%	258	70.7%
2001	341	196	57.5%	28	8.2%	3	0.9%	227	66.6%
2002	365	208	57.0%	21	5.8%	4	1.1%	233	63.8%
2003	342	207	60.5%	28	8.2%	1	0.3%	236	69.0%
2004	401	242	60.3%	22	5.5%	3	0.7%	267	66.6%
2005	340	210	61.8%	24	7.1%	4	1.2%	238	70.0%
2006	450	255	56.7%	36	8.0%	8	1.8%	299	66.4%
2007	399	236	59.1%	32	8.0%	3	0.8%	271	67.9%
2008	360	185	51.4%	36	10.0%				
2009	400	222	55.5%						



*The cohort includes only first-time, first-year Freshman students in the fall of the specified year.

**Graduation Rates after 4, 5, and 6 Years by Selected Ethnicities,
Entering Freshmen Cohorts of 1999-2007**

		Graduates in 4 Years or Less		Graduates in 5th Year		Graduates in 6th Year		Cumulative Graduates in 6 Years	
Cohort*	Size on Entry	No.	%	No.	%	No.	%	No.	%
1999									
African American	33	15	45.5%	2	6.1%	2	6.1%	19	57.6%
Asian	7	3	42.9%	0	0.0%	0	0.0%	3	42.9%
Hispanic	11	5	45.5%	0	0.0%	0	0.0%	5	45.5%
White	222	132	59.5%	11	5.0%	3	1.4%	146	65.8%
Total**	322	184	57.1%	16	5.0%	6	1.9%	206	64.0%
2000									
African American	22	11	50.0%	4	18.2%	1	4.5%	16	72.7%
Asian	13	8	61.5%	2	15.4%	1	7.7%	11	84.6%
Hispanic	13	7	53.8%	2	15.4%	0	0.0%	9	69.2%
White	218	147	67.4%	12	5.5%	1	0.5%	160	73.4%
Total**	365	225	61.6%	28	7.7%	5	1.4%	258	70.7%
2001									
African American	17	10	58.8%	1	5.9%	0	0.0%	11	64.7%
Asian	13	7	53.8%	2	15.4%	1	7.7%	10	76.9%
Hispanic	11	5	45.5%	2	18.2%	0	0.0%	7	63.6%
White	205	123	60.0%	15	7.3%	2	1.0%	140	68.3%
Total**	341	196	57.5%	28	8.2%	3	0.9%	227	66.6%
2002									
African American	19	11	57.9%	1	5.3%	1	5.3%	13	68.4%
Asian	9	5	55.6%	0	0.0%	0	0.0%	5	55.6%
Hispanic	7	4	57.1%	0	0.0%	0	0.0%	4	57.1%
White	211	128	60.7%	12	5.7%	2	0.9%	142	67.3%
Total**	365	208	57.0%	21	5.8%	4	1.1%	233	63.8%
2003									
African American	12	5	41.7%	3	25.0%	0	0.0%	8	66.7%
Asian	11	5	45.5%	1	9.1%	0	0.0%	6	54.5%
Hispanic	7	4	57.1%	2	28.6%	0	0.0%	6	85.7%
White	246	151	61.4%	17	6.9%	1	0.4%	169	68.7%
Total**	342	207	60.5%	28	8.2%	1	0.3%	236	69.0%
2004									
African American	13	7	53.8%	2	15.4%	0	0.0%	9	69.2%
Asian	14	9	64.3%	0	0.0%	1	7.1%	10	71.4%
Hispanic	14	6	42.9%	0	0.0%	0	0.0%	6	42.9%
White	282	171	60.6%	16	5.7%	2	0.7%	189	67.0%
Total**	401	242	60.3%	22	5.5%	3	0.7%	267	66.6%
2005									
African American	16	9	56.3%	1	6.3%	1	6.3%	11	68.8%
Asian	13	6	46.2%	1	7.7%	0	0.0%	7	53.8%
Hispanic	13	9	69.2%	1	7.7%	0	0.0%	10	76.9%
White	241	148	61.4%	19	7.9%	2	0.8%	169	70.1%
Total**	340	210	61.8%	24	7.1%	4	1.2%	238	70.0%
2006									
African American	21	11	52.4%	4	19.0%	1	4.8%	16	76.2%
Asian	11	5	45.5%	0	0.0%	0	0.0%	5	45.5%
Hispanic	13	5	38.5%	4	30.8%	1	7.7%	10	76.9%
White	324	183	56.5%	26	8.0%	4	1.2%	213	65.7%
Total**	450	255	56.7%	36	8.0%	8	1.8%	299	66.4%
2007									
African American	23	10	43.5%	4	17.4%	1	4.3%	15	65.2%
Asian	13	9	69.2%	1	7.7%	0	0.0%	10	76.9%
Hispanic	15	7	46.7%	1	6.7%	0	0.0%	8	53.3%
White	295	179	60.7%	20	6.8%	2	0.7%	201	68.1%
Total**	399	236	59.1%	32	8.0%	3	0.8%	271	67.9%

*Cohort=First-time, first-year freshmen in fall of entry.

**Total includes International, Native American, Other, and Unknown in addition to selected ethnicities.

Graduation Rates after 4, 5, and 6 Years by Gender
Entering Freshmen Cohorts of 1999-2007

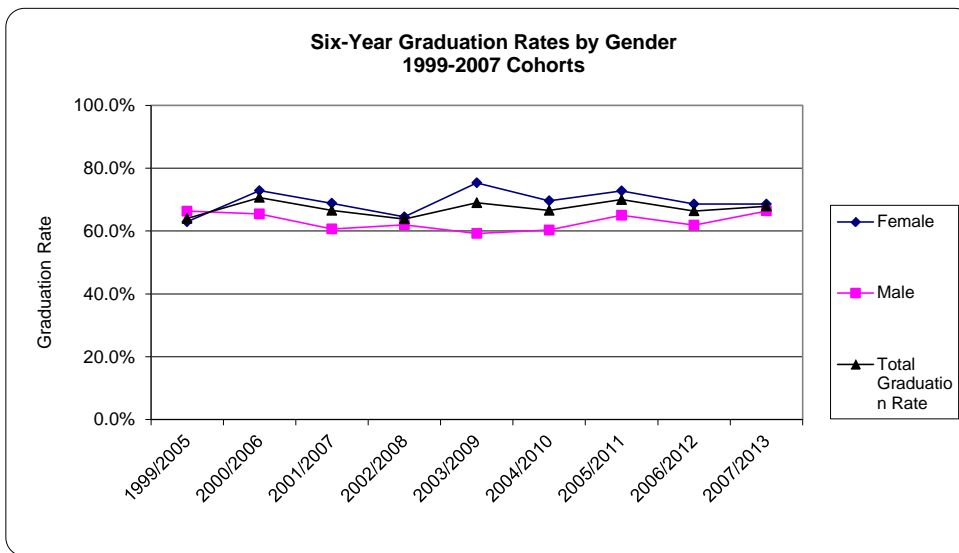
		Graduates in 4 Years or Less		Graduates in 5th Year		Graduates in 6th Year		Cumulative Graduates in 6 Years	
Cohort*	Size on Entry	No.	%	No.	%	No.	%	No.	%
1999									
Female	224	131	58.5%	8	3.6%	2	0.9%	141	62.9%
Male	98	53	54.1%	8	8.2%	4	4.1%	65	66.3%
Total Female and Male	322	184	57.1%	16	5.0%	6	1.9%	206	64.0%
2000									
Female	258	168	65.1%	16	6.2%	4	1.6%	188	72.9%
Male	107	57	53.3%	12	11.2%	1	0.9%	70	65.4%
Total Female and Male	365	225	61.6%	28	7.7%	5	1.4%	258	70.7%
2001									
Female	247	151	61.1%	17	6.9%	2	0.8%	170	68.8%
Male	94	45	47.9%	11	11.7%	1	1.1%	57	60.6%
Total Female and Male	341	196	57.5%	28	8.2%	3	0.9%	227	66.6%
2002									
Female	265	160	60.4%	8	3.0%	3	1.1%	171	64.5%
Male	100	48	48.0%	13	13.0%	1	1.0%	62	62.0%
Total Female and Male	365	208	57.0%	21	5.8%	4	1.1%	233	63.8%
2003									
Female	207	147	71.0%	9	4.3%	0	0.0%	156	75.4%
Male	135	60	44.4%	19	14.1%	1	0.7%	80	59.3%
Total Female and Male	342	207	60.5%	28	8.2%	1	0.3%	236	69.0%
2004									
Female	270	180	66.7%	7	2.6%	1	0.4%	188	69.6%
Male	131	62	47.3%	15	11.5%	2	1.5%	79	60.3%
Total Female and Male	401	242	60.3%	22	5.5%	3	0.7%	267	66.6%
2005									
Female	217	142	65.4%	15	6.9%	1	0.5%	158	72.8%
Male	123	68	55.3%	9	7.3%	3	2.4%	80	65.0%
Total Female and Male	340	210	61.8%	24	7.1%	4	1.2%	238	70.0%
2006									
Female	303	185	61.1%	19	6.3%	4	1.3%	208	68.6%
Male	147	70	47.6%	17	11.6%	4	2.7%	91	61.9%
Total Female and Male	450	255	56.7%	36	8.0%	8	1.8%	299	66.4%
2007									
Female	277	169	61.0%	21	7.6%	0	0%	190	68.6%
Male	122	67	54.9%	11	9.0%	3	2%	81	66.4%
Total Female and Male	399	236	59.1%	32	8.0%	3	1%	271	67.9%

*The cohort includes only first-time, first-year students in the fall of of the specified year.

**Six-Year Graduation Rate Trends* by Gender
1999-2007 Cohorts**

	1999/2005	2000/2006	2001/2007	2002/2008	2003/2009	2004/2010	2005/2011	2006/2012	2007/2013
Female	62.9%	72.9%	68.8%	64.5%	75.4%	69.6%	72.8%	68.6%	68.6%
Male	66.3%	65.4%	60.6%	62.0%	59.3%	60.3%	65.0%	61.9%	66.4%
Total Graduation Rate	64.0%	70.7%	66.6%	63.8%	69.0%	66.6%	70.0%	66.4%	67.9%

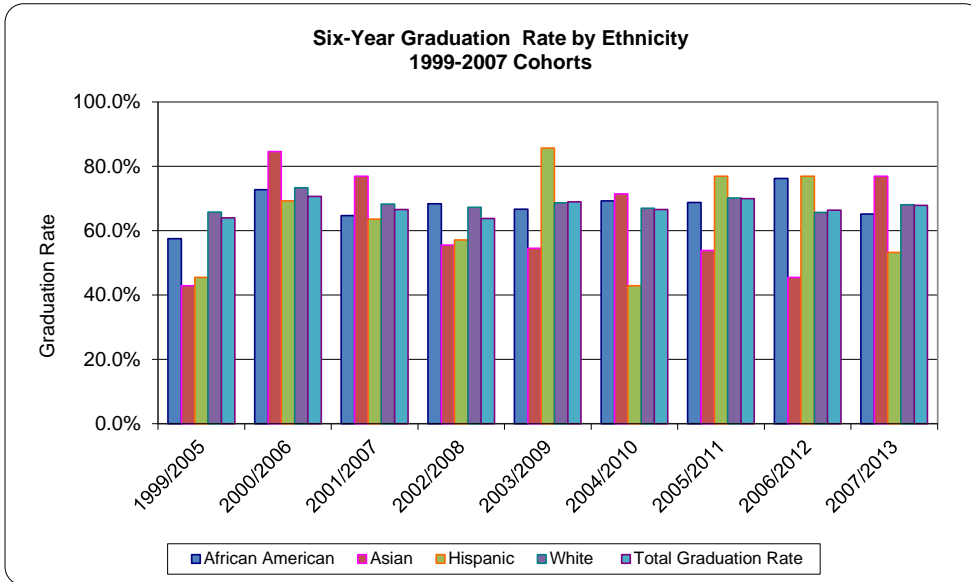
*The great majority of those who graduate complete their degrees within four years.



**Six-Year Graduation Rate Trends* by Ethnicity
1999- 2007 Cohorts**

	1999/2005	2000/2006	2001/2007	2002/2008	2003/2009	2004/2010	2005/2011	2006/2012	2007/2013
African American	57.6%	72.7%	64.7%	68.4%	66.7%	69.2%	68.8%	76.2%	65.2%
Asian	42.9%	84.6%	76.9%	55.6%	54.5%	71.4%	53.8%	45.5%	76.9%
Hispanic	45.5%	69.2%	63.6%	57.1%	85.7%	42.9%	76.9%	76.9%	53.3%
White	65.8%	73.4%	68.3%	67.3%	68.7%	67.0%	70.1%	65.7%	68.1%
Total Graduation Rate	64.0%	70.7%	66.6%	63.8%	69.0%	66.6%	70.0%	66.4%	67.9%

*The great majority of those who graduate complete their degrees within four years.



Freshman* Fall to Fall Retention by Gender: Fall 2008-Fall 2012

Gender	Starting Fall Cohort Size	Number Retained Following Fall	Percent Retained Following Fall
	Fall 2012	Fall 2013	Fall to Fall Retention
Female	284	240	84.5%
Male	126	111	88.1%
Total	410	351	85.6%
	Fall 2011	Fall 2012	Fall to Fall Retention
Female	260	209	80.4%
Male	131	106	80.9%
Total	391	315	81%
	Fall 2010	Fall 2011	Fall to Fall Retention
Female	260	209	80.4%
Male	131	106	80.9%
Total	391	315	80.6%
	Fall 2009	Fall 2010	Fall to Fall Retention
Female	278	233	83.8%
Male	122	96	78.7%
Total	400	329	82.3%
	Fall 2008	Fall 2009	Fall to Fall Retention
Female	262	195	74.4%
Male	98	75	76.5%
Total	360	270	75.0%

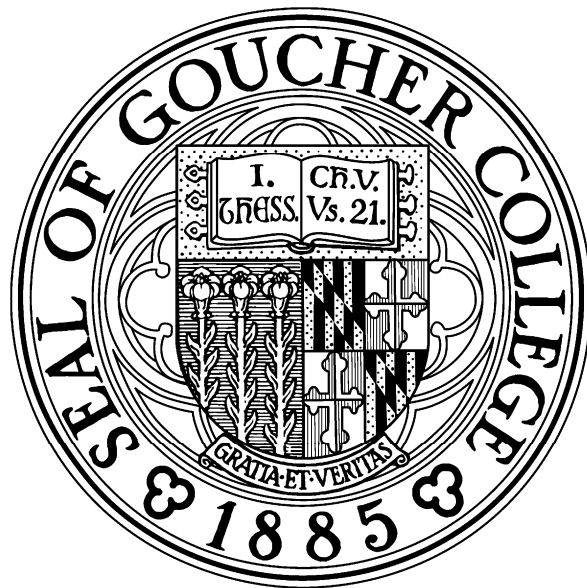
*First-Time, First-Year Freshman

Freshman* Fall to Fall Retention by Ethnicity: Fall 2008-Fall 2012

Ethnicity	Starting Fall Cohort Size	Number Retained Following Fall	Percent Retained Following Fall
	Fall 2012	Fall 2013	Fall to Fall Retention
African Amer.	56	48	85.7%
Native Amer.	5	5	100.0%
Asian	25	21	84.0%
International*	6	6	100.0%
Hispanic	47	42	89.4%
Other	1	1	100.0%
Unknown	17	14	82.4%
White	253	214	84.6%
Total	410	351	85.6%
	Fall 2011	Fall 2012	Fall to Fall Retention
African Amer.	47	34	72.3%
Native Amer.	6	5	83.3%
Asian	22	18	81.8%
International*	9	7	77.8%
Hispanic	22	19	86.4%
Other	1	1	100.0%
Unknown	16	12	75.0%
White	244	211	86.5%
Total	367	307	83.7%
	Fall 2010	Fall 2011	Fall to Fall Retention
African Amer.	30	24	80.0%
Native Amer.	3	3	100.0%
Asian	10	9	90.0%
International*	12	10	83.3%
Hispanic	24	17	70.8%
Other	1	1	100.0%
Unknown	38	30	78.9%
White	273	221	81.0%
Total	391	315	80.6%
	Fall 2009	Fall 2010	Fall to Fall Retention
African Amer.	34	30	88.2%
Native Amer.	6	6	100.0%
Asian	17	15	88.2%
International*	3	3	100.0%
Hispanic	27	22	81.5%
Other	1	1	100.0%
Unknown	55	49	89.1%
White	257	203	79.0%
Total	400	329	82.3%
	Fall 2008	Fall 2009	Fall to Fall Retention
African Amer.	30	26	86.7%
Native Amer.	0	0	0.0%
Asian	8	6	75.0%
International*	9	6	66.7%
Hispanic	17	12	70.6%
Other	5	5	100.0%
Unknown	66	49	74.2%
White	225	166	73.8%
Total	360	270	75.0%

*First-Time, First-Year Freshman

Faculty and Staff Data



Undergraduate Faculty: Full-Time, Half-Time, Part-Time, and FTE - Fall 2004-2013

	Fall 2004	Fall 2005	Fall 2006	Fall 2007	Fall 2008	Fall 2009	Fall 2010	Fall 2011	Fall 2012	Fall 2013
Full-Time faculty*	97	109	130	127	130	130	131	134	135	138
Half-Time faculty	29	24	25	27	30	31	33	33	35	30
Part-Time faculty	56	54	67	59	49	52	51	45	48	34
Total Half-Time and Part-Time faculty	85	78	92	86	79	83	84	78	83	64
Half-Time FTE	14.5	12.0	12.5	13.5	15.0	15.5	16.5	16.5	17.5	15.0
Part-Time FTE	18.7	18.0	22.3	19.7	16.3	17.3	17.0	15.0	16.0	11.3
Total Half-Time and Part-Time FTE	33.2	30.0	34.8	33.2	31.3	32.8	33.5	31.5	33.5	26.3
Total faculty FTE	130.2	139.0	164.8	160.2	161.3	162.8	164.5	165.5	168.5	164.3
Full-Time faculty as percentage of total undergraduate faculty FTE	75%	78%	79%	79%	81%	80%	80%	81%	80%	84%

Excludes faculty in full-time administrative positions, on leave without pay, full time leave replacement if the person being replaced is being paid, and full time instructional staff who teach part time.

A full-time faculty member has both teaching (six three-credit courses a year) and research responsibilities. A half-time faculty member has only teaching responsibilities and therefore is expected to teach proportionately more courses (four three-credit courses a year or three courses with additional duties). Half-time faculty are paid on a salary basis, like full-time faculty, and they are eligible for partial benefits. Part-time faculty includes part-time instructors.

See Glossary for definition of faculty FTE.

Data Source: AAUP Faculty Compensation Survey and faculty database in the Office of the Provost.

Instructional Personnel: Fall 2013

	Full-time	Part-time	Total
Tenured Faculty	67		67
Non-Tenured Faculty on Tenure Track	27		27
Non-Tenured Faculty not on Tenure Track	44	64	108
Total	138	64	202

Instructional Personnel: Fall 2012

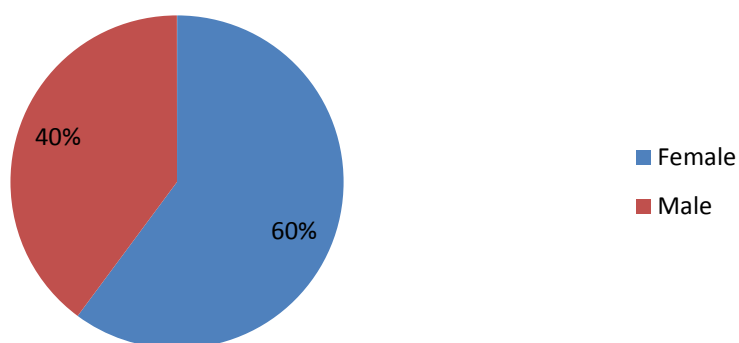
	Full-time	Part-time	Total
Tenured Faculty	63		63
Non-Tenured Faculty on Tenure Track	32		32
Non-Tenured Faculty not on Tenure Track	40	78	118
Total	135	78	213

* Full time includes Instructional Staff without faculty status who teach full-time in "non-tenured faculty not on tenure track" category.

Full-Time Undergraduate Faculty by Gender, Fall 2013

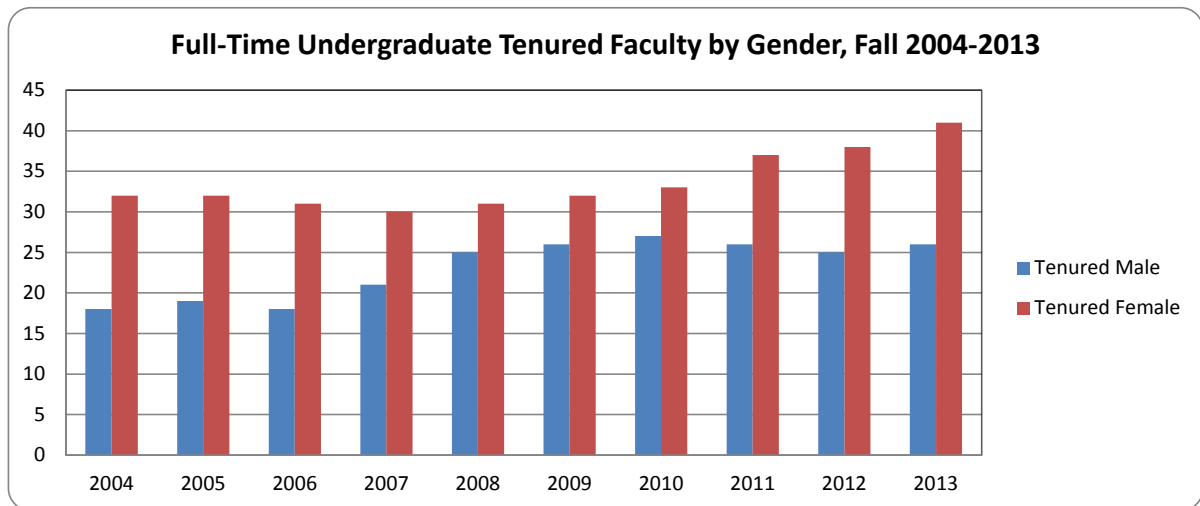
	Number	Percent
Female	83	60%
Male	55	40%
Total	138	100%

**Full-Time Undergraduate Faculty by Gender
Fall 2013**



Full-Time Undergraduate Tenured Faculty by Gender, Fall 2004-2013*

	2004	2005	2006	2007	2008	2009	2010	2011	2012	2013
Tenured Male	18	19	18	21	25	26	27	26	25	26
Tenured Female	32	32	31	30	31	32	33	37	38	41
Total Tenured Faculty	50	51	49	51	56	58	60	63	63	67
Total FT UG Faculty	104	113	117	127	130	130	131	134	135	138
	2004	2005	2006	2007	2008	2009	2010	2011	2012	2013
Tenured Male as % FT UG Faculty	17.3%	16.8%	15.4%	16.5%	19.2%	20.0%	20.6%	19.4%	18.5%	18.8%
Tenured Female as % FT UG Faculty	30.8%	28.3%	26.5%	23.6%	23.8%	24.6%	25.2%	27.6%	28.1%	29.7%
Total Tenured Faculty as % FT UG Faculty	48.1%	45.1%	41.9%	40.2%	43.1%	44.6%	45.8%	47.0%	46.7%	48.6%



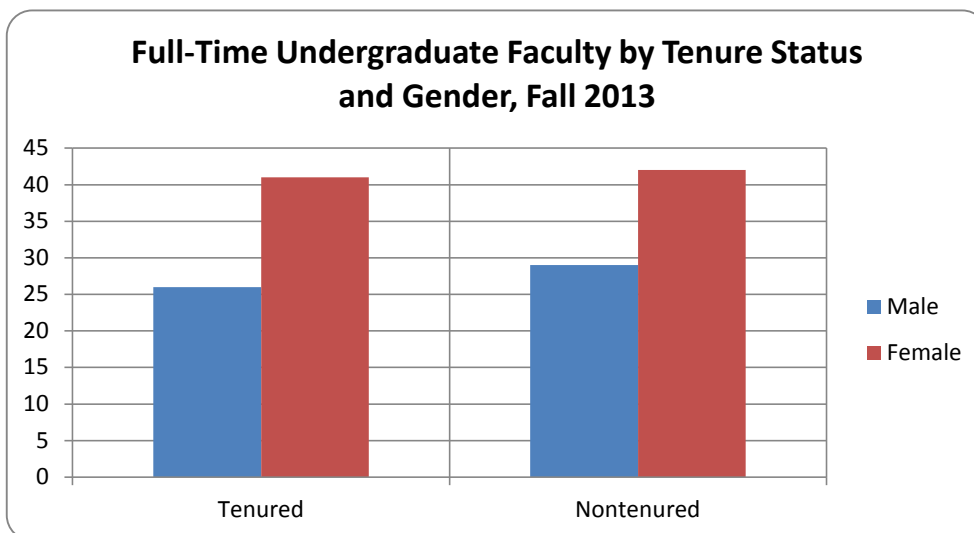
Sources: IPEDS, Salaries, Tenure, and Fringe Benefits of Full-Time Instructional Faculty, and AAUP Faculty Compensation Survey

*In keeping with current AAUP directions, full-time faculty include all full-time faculty who have contracts for the full academic year "regardless of whether they are considered permanent". In addition, starting in 2002, all faculty who were given contracts for the full academic year were included among full-time faculty, regardless of whether they were labelled as "visiting."

Full-Time Undergraduate Faculty by Tenure Status and Gender, Fall 2013

	Tenured	Nontenured	Total
Male	26	29	55
Female	41	42	83
Total	67	71	138

	Tenured %	Nontenured %	Total %
Male	19%	21%	40%
Female	30%	30%	60%
Total	49%	51%	100%



Full-Time Undergraduate Faculty by Ethnicity, Fall 2013

Ethnicity	Number	Percentage
African American	10	7%
Asian	4	3%
Hispanic	7	5%
American Indian/Alaskan Native	0	0%
Native Hawaiian/Pacific Islander	2	1%
Faculty of Color	23	17%
White	111	80%
Other/Unknown	4	3%
Total	138	100%

Other/Unknown Includes 'Two or more races'

Full-Time Undergraduate Faculty by Ethnicity, Fall 2004-2013

Number of of Full-Time Faculty

Ethnicity	Fall 2004	Fall 2005	Fall 2006	Fall 2007	Fall 2008	Fall 2009	Fall 2010	Fall 2011	Fall 2012	Fall 2013
African American	7	7	8	8	8	8	8	10	10	10
Asian	4	3	4	4	5	5	5	3	4	4
Hispanic	5	6	8	6	7	6	7	7	7	7
International*	1	3	3	4	0	0	0	0	0	0
White	87	94	94	105	110	111	111	107	107	111
Other/Unknown**								7	7	6
Total	104	113	117	127	130	130	131	134	135	138

Percentage of Full-Time Faculty*

Ethnicity	Fall 2004	Fall 2005	Fall 2006	Fall 2007	Fall 2008	Fall 2009	Fall 2010	Fall 2011	Fall 2012	Fall 2013
African American	6.7%	6.2%	6.8%	6.3%	6.2%	6.2%	6.1%	7.5%	7.4%	7.2%
Asian	3.8%	2.7%	3.4%	3.1%	3.8%	3.8%	3.8%	2.2%	3.0%	2.9%
Hispanic	4.8%	5.3%	6.8%	4.7%	5.4%	4.6%	5.3%	5.2%	5.2%	5.1%
International**	1.0%	2.7%	2.6%	3.1%	0.0%	0.0%	0.0%	0.0%	0.0%	0.0%
White	83.7%	83.2%	80.3%	82.7%	84.6%	85.4%	84.7%	79.9%	79.3%	80.4%
Other/Unknown								5.2%	5.2%	4.3%
Total	100.0%	100.0%	100.0%	100.0%	100.0%	100.0%	100.0%	100.0%	100.0%	100.0%

*Rounding may cause variations of up to one percent.

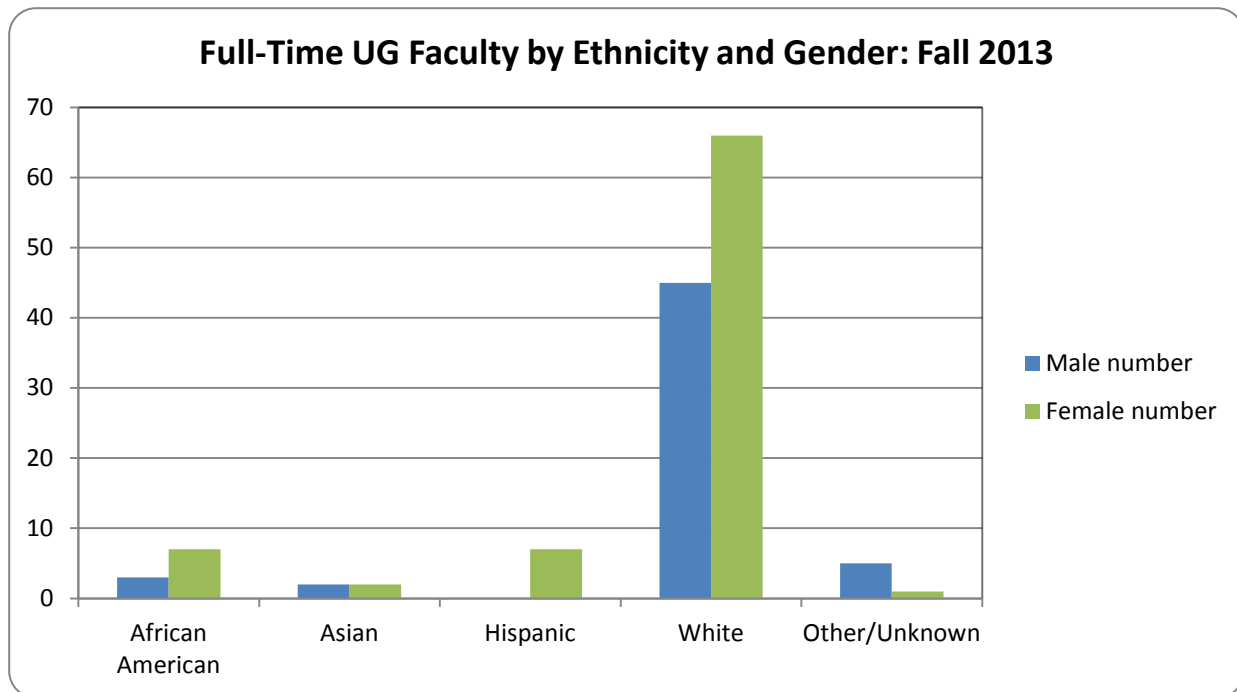
*Non-Resident Alien

**Other/unknown includes 'Two or more races'

Full-Time Undergraduate Faculty by Ethnicity and Gender: Fall 2013

Ethnicity	Male		Female		Total
	number	%	number	%	number
African American	3	30%	7	70%	10
Asian	2	50%	2	50%	4
Hispanic	0	0%	7	100%	7
White	45	41%	66	59%	111
Other/Unknown	5	83%	1	17%	6
Total	55	40%	83	60%	138

*Non-Resident Alien



Half-Time and Part-Time Undergraduate Faculty by Ethnicity and Gender

Fall 2013 Counts

	Half-Time		Part-Time		
Ethnicity	Male	Female	Male	Female	Total
	Numbers				
African American	1		1	1	3
Asian		1		1	2
Hispanic			1	1	2
International*					0
White	11	17	6	18	52
Unknown/Other			3	2	5
Total	12	18	11	23	64

Fall 2013 Percentages

	Half-Time		Part-Time		
Ethnicity	Male	Female	Male	Female	Total
	Percentages				
African American	8.3%	0.0%	9.1%	4.3%	4.7%
Asian	0.0%	5.6%	0.0%	4.3%	3.1%
Hispanic	0.0%	0.0%	9.1%	4.3%	3.1%
International*	0.0%	0.0%	0.0%	0.0%	0.0%
White	91.7%	94.4%	54.5%	78.3%	81.3%
Unknown	0.0%	0.0%	27.3%	8.7%	7.8%
Total	100.0%	100.0%	100.0%	100.0%	100.0%

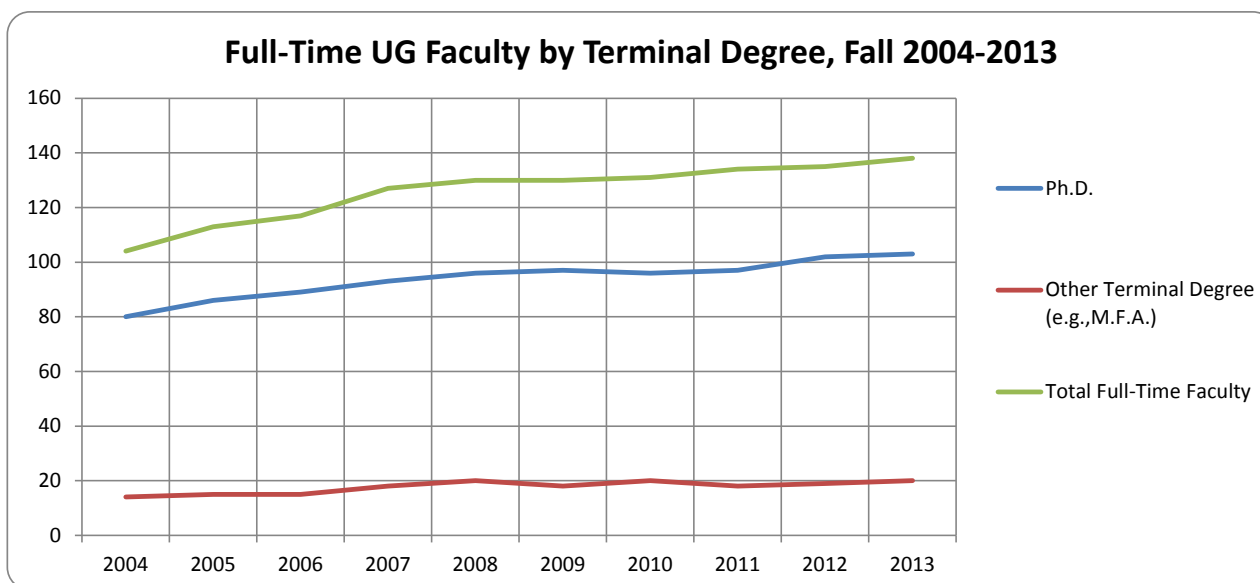
*Non-Resident Alien

Other/Unknown Includes 'Two or more races'

Full-Time Undergraduate Faculty by Terminal Degree Fall 2004-2013

Number										
	2004	2005	2006	2007	2008	2009	2010	2011	2012	2013
Ph.D.	80	86	89	93	96	97	96	97	102	103
Other Terminal Degree (e.g., M.F.A.)	14	15	15	18	20	18	20	18	19	20
Total Terminal Degree	94	101	104	111	116	115	116	115	121	123
Total Full-Time Faculty	104	113	117	127	130	130	131	134	135	138

Percentage										
	2004	2005	2006	2007	2008	2009	2010	2011	2012	2013
Ph.D.	76.9%	76.1%	76.1%	73.2%	73.8%	74.6%	73.3%	72.4%	75.6%	74.6%
Other Terminal Degree (e.g., M.F.A.)	13.5%	13.3%	12.8%	14.2%	15.4%	13.8%	15.3%	13%	14%	14%
Total Terminal Degree	90.4%	89.4%	88.9%	87.4%	89.2%	88.5%	88.5%	85.8%	89.6%	89.1%



Sources: IPEDS, Salaries, AAUP Faculty Compensation Survey, Common Data Set, MICUA Report

**Full-Time, Half-Time, and Part-Time Undergraduate Faculty by Terminal Degree
Fall 2013**

Faculty Status	Total Faculty	Ph.D.		Other Terminal Degree		Total Faculty with Terminal Degree	
		number	%	number	%	number	%
Full-Time	138	103	75%	20	14%	123	89%
Half-Time	30	11	37%	4	13%	15	50%
Part-Time	34	11	32%	4	12%	15	44%
Total Faculty	202	125	62%	28	14%	153	76%

Ratio of Undergraduate Students to Undergraduate Faculty*

Fall 2004-2013

Fall	Student Faculty Ratio
2004	9.6 to 1
2005	9.0 to 1
2006	8.6 to 1
2007	9.1 to 1
2008	8.9 to 1
2009	9.0 to 1
2010	8.8 to 1
2011	8.6 to 1
2012	8.7 to 1
2013	8.7 to 1

* Ratio calculated by dividing undergraduate FTE students by undergraduate FTE faculty.

FTE Student = FT + (1/3) PT

FTE Faculty = FT + (1/2) HT + (1/3) PT

From 2009, approved non-Goucher study abroad students are included in the official undergraduate count.

Full-Time Female Non-faculty Employees: Ethnicity by Occupational Category*, Fall 2013

Occupational Category	Asian	Black or African American	Hispanic or Latino	White	Unknown	Total
Archivists, Curators, and Museum Technicians				3		3
Business and Financial Operations Occupations		3		17		20
Community Service, Legal, Arts, and Media Occupations	1	5	1	17		24
Computer, Engineering, and Science Occupations			1	12		13
Healthcare Practitioners and Technical Occupations				3		3
Librarians				5		5
Library Technicians				2		2
Management Occupations	1		2	32	2	37
Natural Resources, Construction, and Maintenance Occupations				3		3
Office and Administrative Support Occupations	1	3		45		49
Other teaching and instructional support occupations						0
Service Occupations		22		8	2	32
Student and academic Affairs and Other Education Services Options	1		1	6		8
Total	4	33	5	153	4	199

* IPEDS new occupational category:

New occupational categories replaced the primary function/occupational activity categories previously used in

Full-Time Male Non-faculty Employees: Ethnicity by Occupational Category*, Fall 2013

Occupational Category	Asian	Black or African American	Hispanic or Latino	White	Unknown	Total
Business and Financial Operations Occupations		1		3		4
Community Service, Legal, Arts, and Media Occupations		3	1	9	1	14
Computer, Engineering, and Science Occupations		3		4	1	8
Healthcare Practitioners and Technical Occupations						0
Librarians				1		1
Library Technicians				1		1
Management Occupations		1		22	1	24
Natural Resources, Construction, and Maintenance Occupations		2		13		15
Office and Administrative Support Occupations	1			2		3
Other teaching and instructional support occupations						0
Production, Transportation, and Material Moving Occupations		1		4		5
Service Occupations	1	20		8	2	31
Student and academic Affairs and Other Education Services Options				1		1
Total	2	31	1	68	5	107

EDS new occupational category:

1

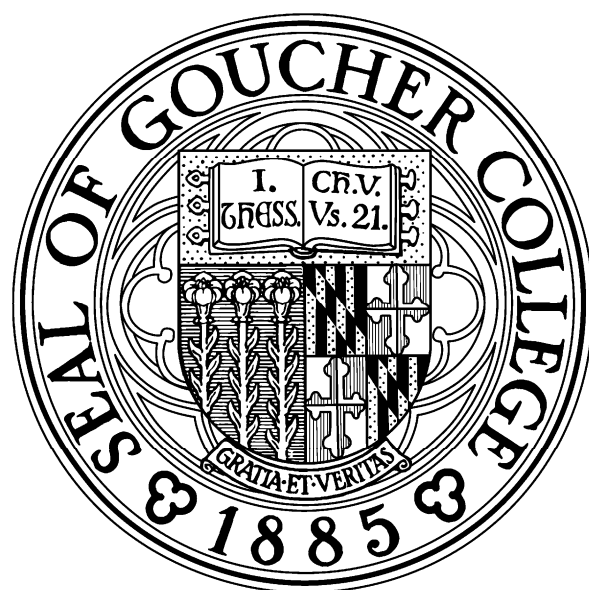
Full-Time Non-faculty Employees: Ethnicity by Occupational Category*, Fall 2013

Occupational Category	Asian	Black or African American	Hispanic or Latino	White	Unknown	Total
Archivists, Curators, and Museum Technicians				3		3
Business and Financial Operations Occupations		4		20		24
Community Service, Legal, Arts, and Media Occupations	1	8	2	26	1	38
Computer, Engineering, and Science Occupations		3	1	16	1	21
Healthcare Practitioners and Technical Occupations				3		3
Librarians				6		6
Library Technicians				3		3
Management Occupations	1	1	2	54	3	61
Natural Resources, Construction, and Maintenance Occupations		2		16		18
Office and Administrative Support Occupations	1	4		47		52
Other teaching and instructional support occupations						0
Production, Transportation, and Material Moving Occupations		1		4		5
Service Occupations	1	42		16	4	63
Student and academic Affairs and Other Education Services Options			1	7	1	9
Total	4	65	5	221	9	306

* IPEDS new occupational category:

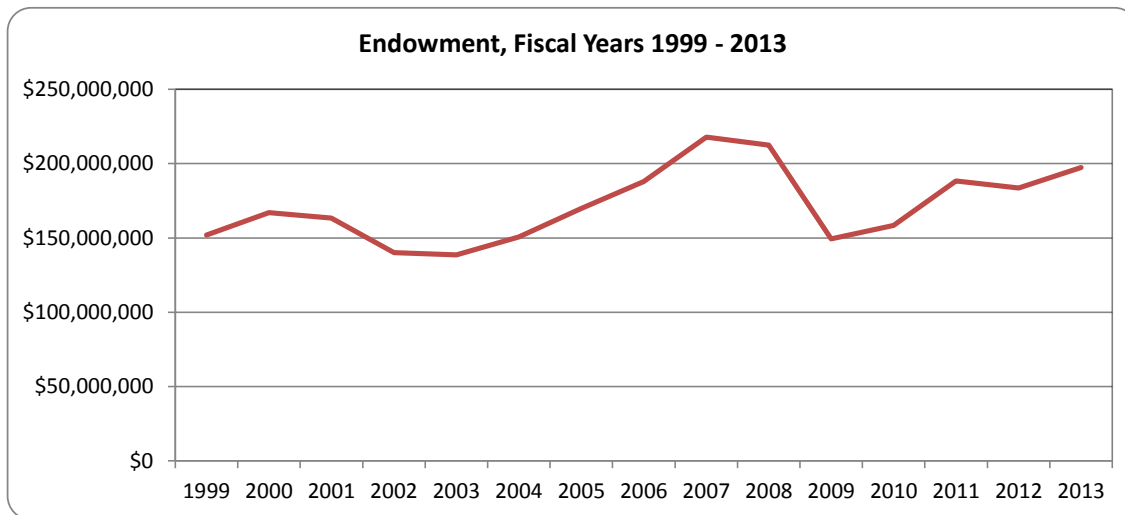
New occupational categories replaced the primary function/occupational activity categories previously used in

Institutional Data



Endowment, Fiscal Years 1999-2013*

Fiscal Year	Endowment
1999	\$151,934,000
2000	\$167,104,000
2001	\$163,369,000
2002	\$140,197,000
2003	\$138,639,000
2004	\$150,760,000
2005	\$169,925,000
2006	\$187,961,000
2007	\$217,791,000
2008	\$212,407,000
2009	\$149,443,000
2010	\$158,375,000
2011	\$188,336,000
2012	\$183,717,000
2013	\$197,497,000



*Total Endowment Net Assets on June 30 of the specified fiscal year.

Source: Goucher College Audited Financial Statements

Total Expenses, Fiscal Years 2004-2013

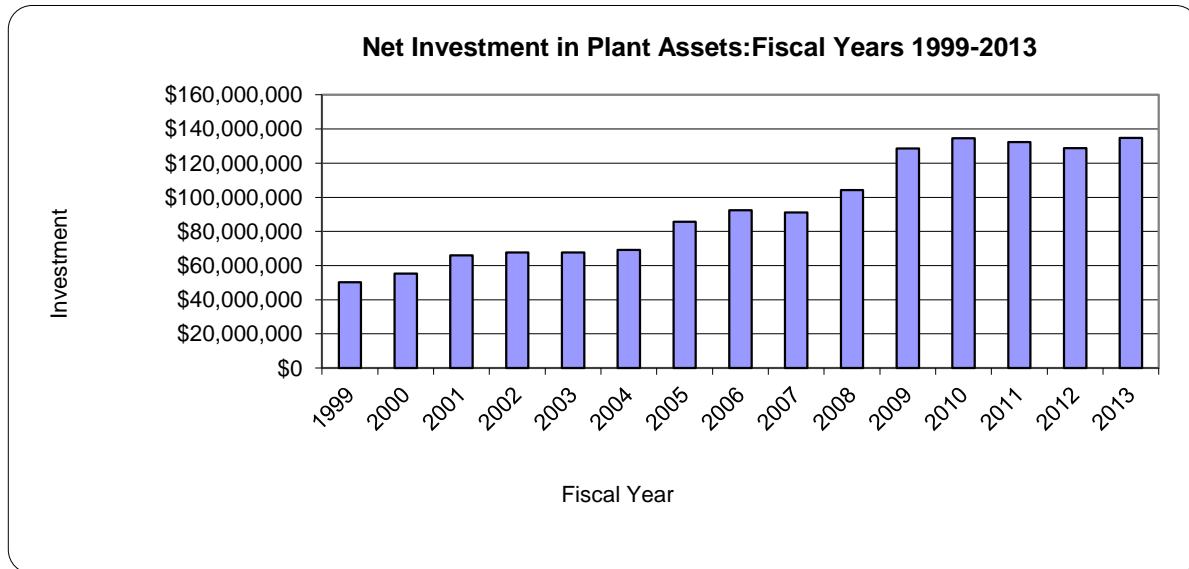
	2004	2005	2006	2007	2008	2009	2010	2011	2012	2013
Instruction and Departmental Research	\$20,510,000	\$21,662,000	\$24,284,000	\$25,649,000	\$26,800,000	\$28,065,000	\$27,041,000	\$28,801,000	\$29,379,000	\$29,405,000
General Administrative	\$8,658,000	\$9,107,000	\$9,531,000	\$9,500,000	\$11,611,000	\$11,371,000	\$10,386,000	\$10,440,000	\$10,716,000	\$11,029,000
Student Services	\$4,402,000	\$5,017,000	\$5,313,000	\$5,093,000	\$5,585,000	\$5,704,000	\$7,978,000	\$8,896,000	\$9,287,000	\$9,331,000
Library	\$1,952,000	\$1,975,000	\$2,213,000	\$2,479,000	\$2,339,000	\$2,541,000	\$2,202,000	\$2,271,000	\$2,314,000	\$2,296,000
Auxiliary Enterprises	\$8,859,000	\$9,998,000	\$11,914,000	\$12,791,000	\$12,180,000	\$13,418,000	\$13,439,000	\$14,637,000	\$14,544,000	\$14,506,000
Total	\$44,381,000	\$47,759,000	\$53,255,000	\$55,512,000	\$58,515,000	\$59,099,000	\$61,046,000	\$65,045,000	\$66,240,000	\$66,567,000

Sources: 2002-2008 Audited Financial Statements, "Statement of Activities"
"Statements of Changes in Net Assets"

Net Investment in Plant Assets, Fiscal Years 1999-2013*

Investment in plant assets (land and improvements, buildings, furniture, equipment, library books, and construction in progress, minus accumulated depreciation)

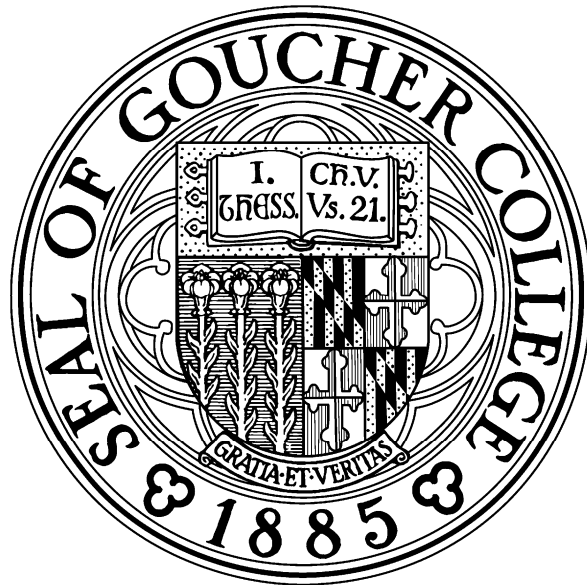
Fiscal Year	Net Investment in Plant Assets
1999	\$50,272,000
2000	\$55,365,000
2001	\$66,060,000
2002	\$67,683,000
2003	\$67,726,000
2004	\$69,095,000
2005	\$85,671,000
2006	\$92,451,000
2007	\$91,090,000
2008	\$104,138,000
2009	\$128,646,000
2010	\$134,558,000
2011	\$132,260,000
2012	\$128,690,000
2013	\$134,727,000



*Balance sheets dated June 30 of the specified year.

Source: Goucher College, Audited Financial Statements

Glossary



GLOSSARY OF TERMS

Credit Hours: This refers to the total credit hours of instruction in which a student is enrolled during a given time frame (e.g., one semester, a fiscal year).

Enrollments/Registrations: This refers to the number of courses in which a student is registered. A student can register for more than one class and have that many enrollments/registrations. If one student is taking two courses, that student is counted as two enrollments.

Fiscal Year (FY): A fiscal year contains the summer and fall of one calendar year and the spring of the subsequent calendar year. For example, the summer and fall of 2004 and the spring of 2005 constitute the individual semesters of Fiscal Year 2005 (sometimes denoted FY05). Fall 2005 is part of FY06.

Full-Time Equivalent Students (FTES) Calculated from Credit Hours: FTES is a mathematical concept, a standardized count, for comparing enrollment data from colleges and universities with different percentages of full-time and part-time students. Not everyone uses exactly the same methodology to calculate student FTE.

Undergraduate FTES= Full-Time Undergraduate Students (Headcount) + (Total UG credit hours of Part-time Students/12)

Graduate FTES=Full-Time Graduate Students (Headcount) + (Total GR credit hours of Part-time Students/9)

Total Undergraduate and Graduate FTES = Undergraduate FTES + Graduate FTES

Full-Time Equivalent Students (FTES) Calculated from Headcount (Using IPEDS Definition):

Undergraduate FTES=Full-Time Undergraduate Students (Headcount) + ((Part-Time Undergraduate Students (Headcount)/3)

Graduate FTES=Full-Time Graduate Students (Headcount) + ((Part-Time Graduate Students (Headcount)/3)

Total Undergraduate and Graduate FTES = Undergraduate FTES + Graduate FTES

Student Faculty Ratio (Undergraduate):

FTE Student \div FTE Faculty, where

FTE Student = Full-Time + (1/3) Part-Time (IPEDS definition)

FTE Faculty = Full-Time + (1/2) Half-Time + (1/3) Part-Time

Headcount or Headcount Enrollment: This refers to the unduplicated count of students enrolled for one or more courses during the time period stated. The term unduplicated means that a student is counted only once, regardless of the number of courses in which a student has enrolled. For comparability over time, these counts are taken at the same time each year. At Goucher, we freeze the headcount enrollment file on the fifteenth day of classes. Official reporting and Fact Book statistics are generally based upon the frozen fall headcount enrollment file.

2013-2014 Goucher College Fact Book: This volume includes data from the most recently completed fiscal year, FY 2013, and data from the most recently completed fall semester, Fall 2013.

ABBREVIATIONS

<u>AAUP:</u>	American Association of University Professors
<u>HEDS:</u>	Higher Education Data Sharing Consortium
<u>IPEDS:</u>	Integrated Postsecondary Education Data System (U.S. Department of Education, National Center for Education Statistics)
<u>MHEC:</u>	Maryland Higher Education Commission
<u>MICUA:</u>	Maryland Independent College and University Association
<u>NCES:</u>	National Center for Education Statistics