

## TROUBLESHOOTING

If the camera won't turn on, it is probably out of batteries. Plug it into a USB port to recharge the battery.

If the video won't play on a computer and shows up as a blank screen or an error message, your computer is probably missing the correct codec. Install the program that comes with the camera, the 3ivx codec will be installed as well.

If the camera is completely dead and it seems that all is lost, there is a reset button hidden inside the tripod hold. This should revive the camera.

Center for Teaching, Learning, and Technology

1021 Dulaney Valley Road  
Baltimore, Maryland 21204

Phone: 410-337-6066  
E-mail: [ctl@goucher.edu](mailto:ctl@goucher.edu)

Center for Teaching, Learning, and Technology  
CTLT@goucher.edu  
x6066

# USING THE FLIP CAMERA



## BASIC USAGE

To turn the camera on, locate the power switch next to the lens of the camera.

The camera should make a chirping sound and turn on when this button is pressed.

## Recording Video

To start recording video, locate your subject in the viewfinder and hit the big red button.

To stop recording, press the red button again.

## PLAYBACK

To view your video after you've recorded it, press the 'play' button on the back of the camera.

If you have more than one video recorded, use the arrow keys to scroll through the videos, then hit 'play' to watch them.

You can record up to 60 minutes of footage at a time.

To control the volume during playback, use the +/- arrows.

To delete a video, select it using the arrow keys, then hit the trash-can icon.

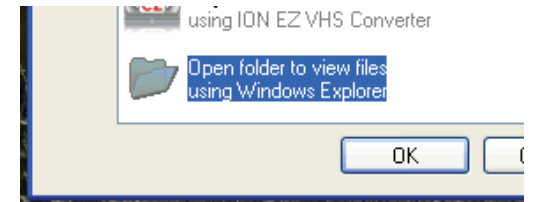
Scroll over to 'Yes', and then hit the play button to delete the video.

## CONNECTING TO THE COMPUTER

To reveal the Flip camera's USB connector, locate the switch on the side of the camera.

The USB connector should pop out, once it does plug it into a USB port on your computer.

When the Flip Camera connects, it will give you some options. Choose to open in Explorer.



Open the folder DCIM to see your videos. Then drag and drop them to your computer.



When you disconnect the Flip camera from your computer, remember to use the 'Safely Remove Hardware' feature if you are using a PC, and eject the device if you are on a Mac.