

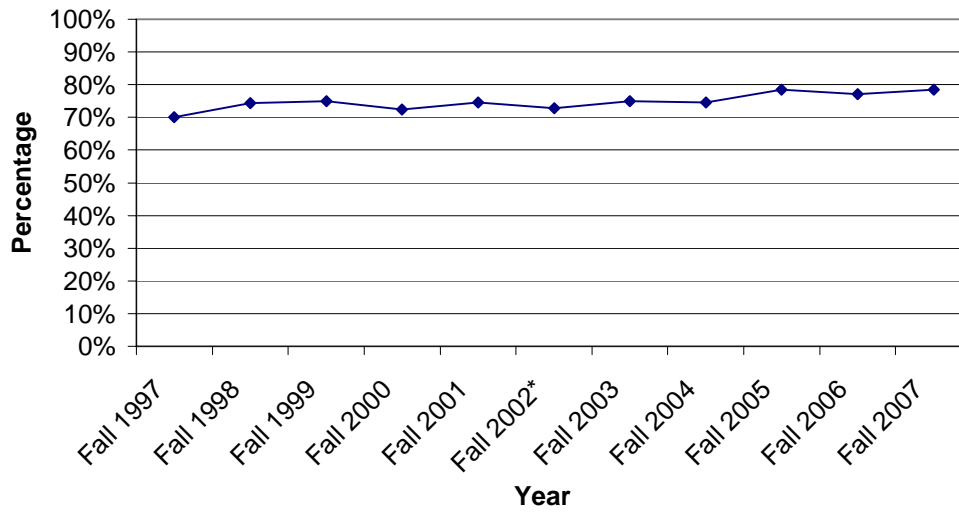
Undergraduate Faculty: Full-Time*, Half-Time, Part-Time, and FTE***
Fall 1997 to Fall 2007**

	Fall 1997	Fall 1998	Fall 1999	Fall 2000	Fall 2001	Fall 2002*	Fall 2003	Fall 2004	Fall 2005	Fall 2006	Fall 2007
Total number of full-time undergraduate faculty, including those serving in administration	78	79	79	79	81	100	101	108	117	121	125
Number serving in full-time administrative positions	1	1	1	2	3	4	3	4	4	4	4
LINE											
1. Number of full-time faculty potentially teaching undergraduates	77	78	78	77	78	96	98	104	113	117	121
2. Number of full-time faculty on leave included in line 1	9	6	8	5	1	7	7	9	7	8	10
3. Number of net full-time faculty (line 1 minus line 2)	68	72	70	72	77	89	91	95	106	109	111
4. Number of other (temporary and visiting) full-time undergraduate faculty	4	5	10	10	12	0	0	2	3	8	10
5. Number of full-time faculty teaching undergraduates (line 3 plus line 4).	72	77	80	82	89	89	91	97	109	117	121
6. Number of half-time faculty in undergraduate division	22	19	22	24	27	30	33	29	24	25	27
7. Number of part-time faculty in undergraduate division	59	51	47	58	51	46	42	56	54	67	59
8. Total number of half-time and part-time faculty in undergraduate division	81	70	69	82	78	76	75	85	78	92	86
9. FTE of half-time and part-time faculty in line 8	30.7	26.5	26.7	31.3	30.5	33.3	30.5	33.2	30.0	34.8	33.2
Half-time FTE	11.0	9.5	11.0	12.0	13.5	15.0	16.5	14.5	12.0	12.5	13.5
Part-time FTE	19.7	17.0	15.7	19.3	17.0	15.3	14.0	18.7	18.0	22.3	19.7
10. Total FTE of faculty teaching undergraduates (line 5 plus line 9)	102.7	103.5	106.7	113.3	119.5	122.3	121.5	130.2	139.0	151.8	154.2
11. Full-time undergraduate faculty as percentage of total undergraduate faculty FTE (line 5 divided by line 10).	70%	74%	75%	72%	74%	73%	75%	75%	78%	77%	78%
12. Number of Full-time Instructional Staff without faculty rank										13	6
13. Number of Full-time Instructional Staff (line 5 plus line 12)										130	127
11. Full-time undergraduate faculty + instruc staff as percentage of total undergraduate faculty FTE plus instruc staff fte (line 5 + line 12 divided by line 10 + line 12).										79%	79%

*In keeping with current AAUP directions, full-time faculty include all full-time faculty who have contracts for the full academic year *regardless of whether they are considered permanent" (www.aaup.org/research/salary/survey). In addition, starting in 2002, all faculty who were given contracts for the full academic year were included among full-time faculty, regardless of whether they were labeled as "visiting."
 **A full-time faculty member has both teaching (six three-credit courses a year) and research responsibilities. A half-time faculty member has only teaching responsibilities and therefore is expected to teach proportionately more courses (four three-credit courses a year or three courses with additional duties). Half-time faculty are paid on a salary basis, like full-time faculty, and they are eligible for partial benefits.
 *** See Glossary for definition of faculty FTE.

Source: AAUP Faculty Compensation Survey Fall 1997-current and faculty database in the Office of the Academic Dean.

**Full-Time Undergraduate Faculty as Percentage of Total Undergraduate Faculty FTE
Fall 1997-2007**



*In keeping with current AAUP directions, full-time faculty include all full-time faculty who have contracts for the full academic year "regardless of whether they are considered permanent" (www.aaup.org/research/salary/survey/2004-05/exclinst.htm). In addition, starting in 2002, all faculty who were given contracts for the full academic year were included among full-time faculty, regardless of whether they were labelled as "visiting."

Sources: AAUP Faculty Compensation Surveys and faculty database in the Office of the Academic Dean.

Insturctional Personnel

Fall 2007

	Full-time	Part-time	Total	FTE	FTE Percentage
Tenured Faculty	51		51	51	32.8%
Non-Tenured Faculty on Tenure Track	35		35	35	22.5%
Non-Tenured Faculty not on Tenure Track	41	86	127	69.7	44.8%
Total	127	86	213	155.7	100.0%

* Includes 6 full-time Instructional Staff without faculty status in "non-tenured faculty not on tenure track" category

Instructional Personnel

Fall 2006

	Full-time	Part-time	Total	FTE	FTE Percentage
Tenured Faculty	49		49	49	30.5%
Non-Tenured Faculty on Tenure Track	31		31	31	19.3%
Non-Tenured Faculty not on Tenure Track	50	92	142	80.7	50.2%
Total	130	92	222	160.7	100.0%

Fall 2005

	Full-time	Part-time	Total	FTE	FTE Percentage
Tenured Faculty	51		51	51	36.7%
Non-Tenured Faculty on Tenure Track	26		26	26	18.7%
Non-Tenured Faculty not on Tenure Track	36	78	114	62.0	44.6%
Total	113	78	191	139.0	100.0%

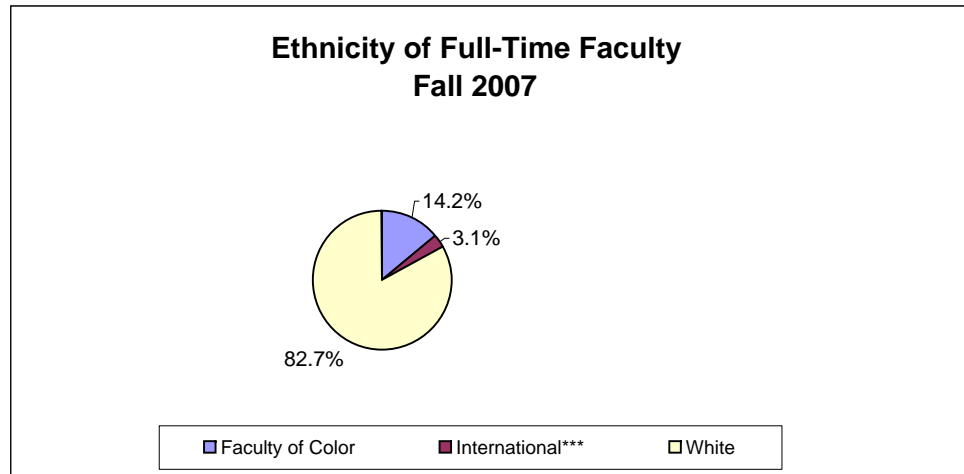
Ethnicity of Full-Time Faculty*, Fall 2007**

Ethnicity	Undergrad FT Faculty	
	Number	Percentage
African American	8	6.3%
Asian	4	3.1%
Hispanic	6	4.7%
Faculty of Color	18	14.2%
International***	4	3.1%
White	105	82.7%
Total	127	100.0%

* Excludes faculty in full-time administrative positions.

**In keeping with current AAUP directions, full-time faculty include all full-time faculty who have contracts for the full academic year "regardless of whether they are considered permanent" (www.aaup.org/research/salary/survey/2004-05/exclinst.htm). In addition, starting in 2002, all faculty who were given contracts for the full academic year were included among full-time faculty, regardless of whether they were labelled as "visiting."

***Non-Resident Alien



Full-Time Undergraduate Faculty* by Ethnicity, Fall 1993-2007**

Number of Full-Time Faculty

Ethnicity	Fall 1993	Fall 1995	Fall 1997	Fall 1999	Fall 2001	Fall 2002	Fall 2003	Fall 2004	Fall 2005	Fall 2006	Fall 2007
African American	0	0	2	3	3	7	7	7	7	8	8
Asian	2	3	3	3	3	3	3	4	3	4	4
Hispanic	1	2	2	2	2	5	5	5	6	8	6
International***	1	2	2	1	1	1	0	1	3	3	4
White	69	67	69	70	72	80	83	87	94	94	105
Total	73	74	78	79	81	96	98	104	113	117	127

Percentage of Full-Time Faculty*

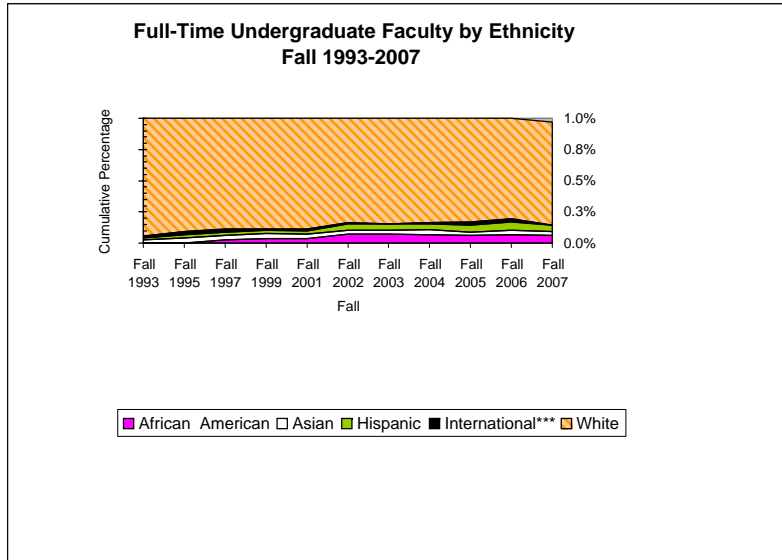
Ethnicity	Fall 1993	Fall 1995	Fall 1997	Fall 1999	Fall 2001	Fall 2002	Fall 2003	Fall 2004	Fall 2005	Fall 2006	Fall 2007
African American	0.0%	0.0%	2.6%	3.8%	3.7%	7.3%	7.1%	6.7%	6.2%	6.8%	6.3%
Asian	2.7%	4.1%	3.8%	3.8%	3.7%	3.1%	3.1%	3.8%	2.7%	3.4%	3.1%
Hispanic	1.4%	2.7%	2.6%	2.5%	2.5%	5.2%	5.1%	4.8%	5.3%	6.8%	4.7%
International***	1.4%	2.7%	2.6%	1.3%	1.2%	1.0%	0.0%	1.0%	2.7%	2.6%	3.1%
White	94.5%	90.5%	88.5%	88.6%	88.9%	83.3%	84.7%	83.7%	83.2%	80.3%	82.7%
Total	100.0%	100.0%	100.0%	100.0%	100.0%	100.0%	100.0%	100.0%	100.0%	100.0%	100.0%

* Excludes faculty in full-time administrative positions.

** Rounding may cause variations of up to one percent.

***In keeping with current AAUP directions, full-time faculty include all full-time faculty who have contracts for the full academic year *regardless of whether they are considered permanent" (www.aaup.org). In addition, starting in 2002, all faculty who were given contracts for the full academic year were included among full-time faculty, regardless of whether they were labelled as "visiting."

***Non-Resident Alien



Full-Time Faculty by Tenure Status and Ethnicity, Fall 2007

Full-Time Faculty by Tenure Status and Ethnicity

Ethnicity	Tenured	Non-Tenured	Total
African American	2	6	8
Asian	3	1	4
Hispanic	0	6	6
International*	0	4	4
White	46	59	105
Total	51	76	127

*Non-Resident Alien

Percentage of Full-Time Faculty by Tenure Status and Ethnicity

Ethnicity	Tenured	Non-Tenured	Total
African American	3.9%	7.9%	6.3%
Asian	5.9%	1.3%	3.1%
Hispanic	0.0%	7.9%	4.7%
International*	0.0%	5.3%	3.1%
White	90.2%	77.6%	82.7%
Total	100.0%	100.0%	100.0%

*Non-Resident Alien

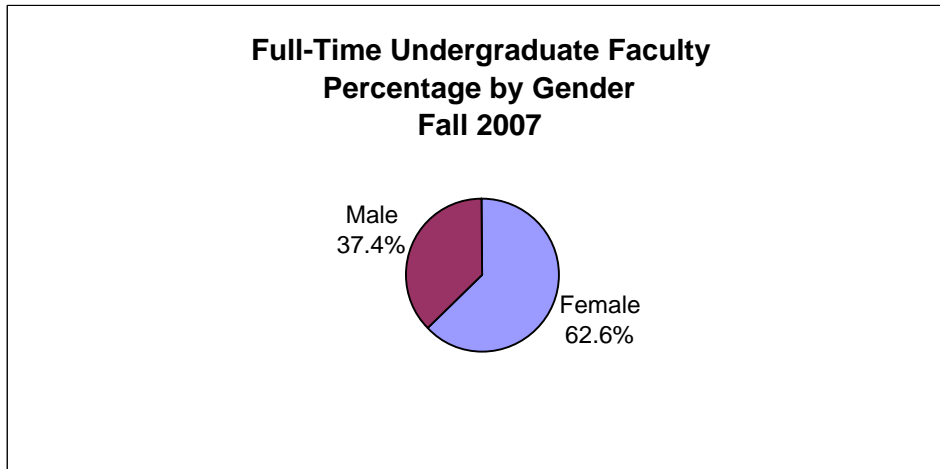
Full-Time Undergraduate Faculty* by Gender, Fall 2007**

	Number	Percent
Female	79.5	62.6%
Male	47.5	37.4%
Total	127	100.0%

* Excludes faculty in full-time administrative positions.

**In keeping with current AAUP directions, full-time faculty include all full-time faculty who have contracts for the full academic year "regardless of whether they are considered permanent" (www.aaup.org/research/salary/survey/2004-05/exclinst.htm).

In addition, starting in 2002, all faculty who were given contracts for the full academic year were included among full-time faculty, regardless of whether they were labelled as "visiting."

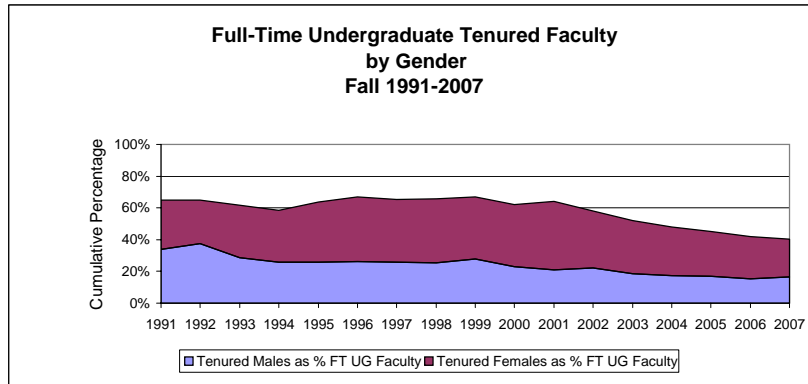


Full-Time Undergraduate Tenured Faculty by Gender, Fall 1991-2007*

	1991	1992	1993	1994	1995	1996	1997	1998	1999	2000	2001	2002	2003	2004	2005	2006	2007
Tenured Males	25	29	21	18	19	20	20	20	22	18	17	22	18	18	19	18	21
Tenured Females	23	21	24	23	28	31	31	32	31	31	35	36	33	32	32	31	30
Total Tenured Faculty	48	50	45	41	47	51	51	52	53	49	52	58	51	50	51	49	51
Total FT UG Faculty	74	77	73	70	74	76	78	79	79	79	81	100	98	104	113	117	127

	1991	1992	1993	1994	1995	1996	1997	1998	1999	2000	2001	2002	2003	2004	2005	2006	2007
Tenured Males as % FT UG Faculty	34%	37.7%	28.8%	25.7%	25.7%	26.3%	25.6%	25.3%	27.8%	22.8%	21.0%	22.0%	18.4%	17.3%	16.8%	15.4%	16.5%
Tenured Females as % FT UG Faculty	31%	27.3%	32.9%	32.9%	37.8%	40.8%	39.7%	40.5%	39.2%	39.2%	43.2%	36.0%	33.7%	30.8%	28.3%	26.5%	23.6%
Total Tenured Faculty as % FT UG Faculty	65%	64.9%	61.6%	58.6%	63.5%	67.1%	65.4%	65.8%	67.1%	62.0%	64.2%	58.0%	52.0%	48.1%	45.1%	41.9%	40.2%

*In keeping with current AAUP directions, full-time faculty include all full-time faculty who have contracts for the full academic year *regardless of whether they are considered permanent* (www.aaup.org/research/salary/survey/2004-05/exclinst.htm). In addition, starting in 2002, all faculty who were given contracts for the full academic year were included among full-time faculty, regardless of whether they were labelled as "visiting."



Sources: IPEDS, Salaries, Tenure, and Fringe Benefits of Full-Time Instructional Faculty, 1997-2002, and AAUP Faculty Compensation Survey Fall 2003-Fall 2005.

Full-Time Undergraduate Faculty by Tenure Status and Gender, Fall 2007

Full-Time Faculty by Gender and Tenure Status

	Tenured	Nontenured	Total
	no.	no.	no.
Men	21	28	49
Women	30	48	78
Total	51	76	127

Full-Time Faculty By Gender and Tenure Status:
Male and Female Full-Time Faculty Percentage Tenured

	Tenured	Nontenured	Total	N
Men	42.9%	57.1%	100.0%	49
Women	38.5%	61.5%	100.0%	78
Total	40.2%	59.8%	100.0%	127

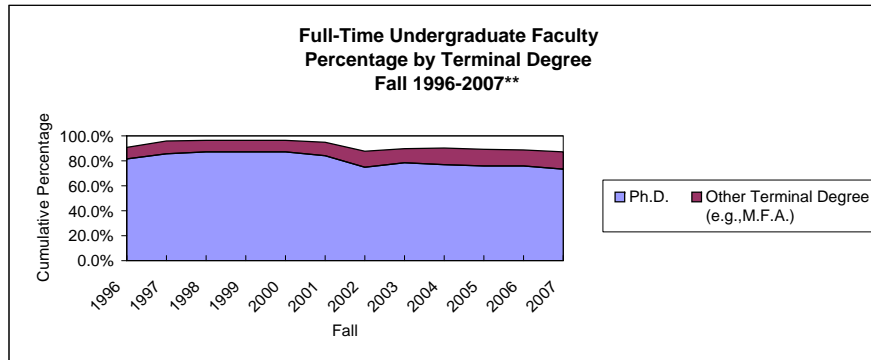
**Full-Time Undergraduate Faculty* by Terminal Degree
Fall 1996-2007****

Number												
	1996	1997	1998	1999	2000	2001	2002	2003	2004	2005	2006	2007
Ph.D.	62	67	69	69	69	68	72	77	80	86	89	93
Other Terminal Degree (e.g.,M.F.A.)	7	8	7	7	7	9	12	11	14	15	15	18
Total Full-Time Faculty	76	78	79	79	79	81	96	98	104	113	117	127

* Excludes faculty in full-time administrative positions.

**In keeping with current AAUP directions, full-time faculty include all full-time faculty who have contracts for the full academic year *regardless of whether they are considered permanent" (www.aaup.org/research/salary/survey/2004-05/exclinst.htm). In addition, starting in 2002, all faculty who were given contracts for the full academic year were included among full-time faculty, regardless of whether they were labelled as "visiting."

Percentage												
	1996	1997	1998	1999	2000	2001	2002	2003	2004	2005	2006	2007
Ph.D.	81.6%	85.9%	87.3%	87.3%	87.3%	84.0%	75.0%	78.6%	76.9%	76.1%	76.1%	73.2%
Other Terminal Degree (e.g.,M.F.A.)	9.2%	10.3%	8.9%	8.9%	8.9%	11.1%	12.5%	11.2%	13.5%	13.3%	12.8%	14.2%
Percentage with Terminal Degree	90.8%	96.2%	96.2%	96.2%	96.2%	95.1%	87.5%	89.8%	90.4%	89.4%	88.9%	87.4%



Sources: IPEDS, Salaries, Tenure, and Fringe Benefits of Full-Time Instructional Faculty, 1996-2002 and AAUP Faculty Compensation Survey 2005-2006
MICUA, Full-time Faculty with a Terminal Degree, Fall 2005

**Full-Time , Half-Time , and Part-Time Undergraduate Faculty by Terminal Degree
Fall 2007**

Faculty	Total No. Faculty	Ph.D. in Field		Other Terminal Degree		Total Faculty with Terminal Degree	
		No.	%	No.	%	No.	%
Full-Time	127	93	73.2%	18	14.2%	111	87.4%
Half-Time	27	12	44.4%	2	7.4%	14	51.9%
Part-Time	67	11	16.4%	11	16.4%	22	32.8%
Total Faculty	221	116	52.5%	31	14.0%	147	66.5%

**Full Time Faculty by Ethnicity and Gender
Fall 2007**

Full Time Faculty by Ethnicity and Gender

Ethnicity	Males	Females	Total
African American	2	6	8
Asian	2	2	4
Hispanic	1	5	6
International*	1	3	4
White	41	64	105
Total	47	80	127

*Non-Resident Alien

Percentage of Full Time Faculty by Ethnicity and Gender

Ethnicity	Males	Females	Total
African American	4.3%	7.5%	6.3%
Asian	4.3%	2.5%	3.1%
Hispanic	2.1%	6.3%	4.7%
International*	2.1%	3.8%	3.1%
White	87.2%	80.0%	82.7%
Total	100.0%	100.0%	100.0%

*Non-Resident Alien

**Full Time Faculty by Ethnicity and Gender
Fall 2006**

Full Time Faculty by Ethnicity and Gender

Ethnicity	Males	Females	Total
African American	2	6	8
Asian	2	2	4
Hispanic	2	6	8
International*	1	2	3
White	40	67	107
Total	47	83	130

*Non-Resident Alien

Percentage of Full Time Faculty by Ethnicity and Gender

Ethnicity	Males	Females	Total
African American	4.3%	7.2%	6.2%
Asian	4.3%	2.4%	3.1%
Hispanic	4.3%	7.2%	6.2%
International*	2.1%	2.4%	2.3%
White	85.1%	80.7%	82.3%
Total	100.0%	100.0%	100.0%

*Non-Resident Alien

Half-Time and Part-Time Undergraduate Faculty by Ethnicity and Gender Fall 2007

Half-Time and Part-Time Faculty by Ethnicity and Gender

Ethnicity	Half-Time		Part-Time		Total
	Males	Females	Males	Females	
African American	1	0	1	5	7
Asian	0	1	0	1	2
Hispanic	0	1	0	0	1
International*	0	0	0	1	1
White	9	13	13	29	64
Unknown/Other	0	2	7	2	11
Total	10	17	21	38	86

*Non-Resident Alien

Percentage of Half-Time and Part-Time Faculty by Ethnicity and Gender

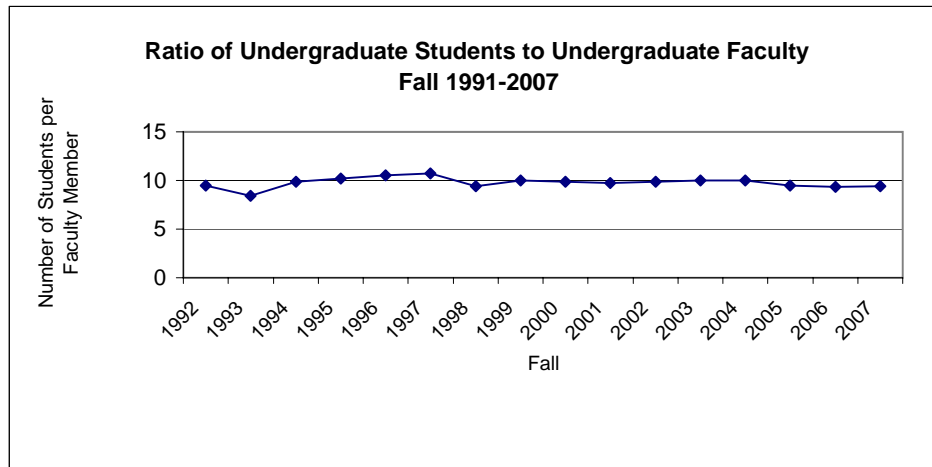
Ethnicity	Half-Time		Part-Time		Total
	Males	Females	Males	Females	
African American	10.0%	0.0%	4.8%	13.2%	8.1%
Asian	0.0%	5.9%	0.0%	2.6%	2.3%
Hispanic	0.0%	5.9%	0.0%	0.0%	1.2%
International*	0.0%	0.0%	0.0%	2.6%	1.2%
White	90.0%	76.5%	61.9%	76.3%	74.4%
Unknown	0.0%	11.8%	33.3%	5.3%	12.8%
Total	100.0%	100.0%	100.0%	100.0%	100.0%

*Non-Resident Alien

Ratio of Undergraduate Students to Undergraduate Faculty*
Fall 1991-2007

Fall	Undergraduate		to	Undergraduate	
	Students			Faculty	
1991	8.1			1	
1992	9.5			1	
1993	8.4			1	
1994	9.9			1	
1995	10.2			1	
1996	10.5			1	
1997	10.7			1	
1998	9.4			1	
1999	10.0			1	
2000	9.9			1	
2001	9.8			1	
2002	9.9			1	
2003	10.0			1	
2004	10.0			1	
2005	9.5			1	
2006	9.3			1	
2007	9.4			1	

* Ratio calculated by dividing undergraduate FTE students (excluding those studying abroad) by undergraduate FTE faculty.



**Total Employees: Full-Time and Part-Time Faculty and Nonfaculty Employees
By Ethnicity and Gender
Fall 2007, Fall 2006, Fall 2005, and Fall 2004**

Fall 2007

Ethnicity	Full-Time Men		Full-Time Women		Part-Time Men		Part-Time Women		Total Men		Total Women		Total Men and Women	
	No.	%	No.	%	No.	%	No.	%	No.	%	No.	%	No.	%
International*	1	0.7%	4	1.5%	1	1.8%	3	2.9%	2	1.0%	7	1.9%	9	1.6%
African American	29	19.3%	37	14.1%	8	14.0%	12	11.4%	37	17.8%	49	13.3%	86	14.9%
Native American/Alaska Native	1	0.7%	2	0.8%	0	0.0%	1	1.0%	1	0.5%	3	0.8%	4	0.7%
Asian/Pacific Islander	4	2.7%	2	0.8%	1	1.8%	3	2.9%	5	2.4%	5	1.4%	10	1.7%
Hispanic	3	2.0%	5	1.9%	1	1.8%	1	1.0%	4	1.9%	6	1.6%	10	1.7%
White, non-Hispanic	108	72.0%	208	79.1%	42	73.7%	79	75.2%	151	72.6%	287	78.0%	438	76.0%
Ethnicity Unknown	4	2.7%	5	1.9%	4	7.0%	6	5.7%	8	3.8%	11	3.0%	19	3.3%
Grand Total	150	100.0%	263	100.0%	57	100.0%	105	100.0%	208	100.0%	368	100.0%	576	100.0%

Fall 2006

Ethnicity	Full-Time Men		Full-Time Women		Part-Time Men		Part-Time Women		Total Men		Total Women		Total Men and Women	
	No.	%	No.	%	No.	%	No.	%	No.	%	No.	%	No.	%
International*	1	0.7%	2	0.8%	1	1.6%	0	0.0%	2	1.0%	2	0.6%	4	0.7%
African American	28	18.9%	40	15.6%	10	16.4%	9	9.2%	38	18.2%	49	13.8%	87	15.5%
Native American/Alaska Native	0	0.0%	2	0.8%	0	0.0%	2	2.0%	0	0.0%	4	1.1%	4	0.7%
Asian/Pacific Islander	3	2.0%	3	1.2%	3	4.9%	1	1.0%	6	2.9%	4	1.1%	10	1.8%
Hispanic	6	4.1%	6	2.3%	2	3.3%	1	1.0%	8	3.8%	7	2.0%	15	2.7%
White, non-Hispanic	109	73.6%	195	76.2%	41	67.2%	73	74.5%	150	71.8%	268	75.7%	418	74.2%
Ethnicity Unknown	1	0.7%	8	3.1%	4	6.6%	12	12.2%	5	2.4%	20	5.6%	25	4.4%
Grand Total	148	100.0%	256	100.0%	61	100.0%	98	100.0%	209	100.0%	354	100.0%	563	100.0%

Fall 2005

Ethnicity	Full-Time Men		Full-Time Women		Part-Time Men		Part-Time Women		Total Men		Total Women		Total Men and Women	
	No.	%	No.	%	No.	%	No.	%	No.	%	No.	%	No.	%
International*	2	1.4%	2	0.8%	0	0.0%	0	0.0%	2	1.0%	2	0.6%	4	0.7%
African American	24	16.7%	37	14.5%	7	13.2%	8	8.1%	31	15.7%	45	12.7%	76	13.8%
Native American/Alaska Native	0	0.0%	4	1.6%	0	0.0%	2	2.0%	0	0.0%	6	1.7%	6	1.1%
Asian/Pacific Islander	3	2.1%	2	0.8%	1	1.9%	3	3.0%	4	2.0%	5	1.4%	9	1.6%
Hispanic	5	3.5%	4	1.6%	3	5.7%	1	1.0%	8	4.1%	5	1.4%	13	2.4%
White, non-Hispanic	104	72.2%	199	78.0%	35	66.0%	74	74.7%	139	70.6%	273	77.1%	412	74.8%
Ethnicity Unknown	6	4.2%	7	2.7%	7	13.2%	11	11.1%	13	6.6%	18	5.1%	31	5.6%
Grand Total	144	100.0%	255	100.0%	53	100.0%	99	100.0%	197	100.0%	354	100.0%	551	100.0%

Fall 2004

Ethnicity	Full-Time Men		Full-Time Women		Part-Time Men		Part-Time Women		Total Men		Total Women		Total Men and Women	
	No.	%	No.	%	No.	%	No.	%	No.	%	No.	%	No.	%
International*	0	0.0%	3	1.2%	1	2.1%	0	0.0%	1	0.6%	3	0.9%	4	0.8%
Black, non-Hispanic	22	16.4%	34	13.9%	7	14.9%	2	2.3%	29	16.0%	36	10.8%	65	12.6%
American Indian/Alaska Native	0	0.0%	4	1.6%	1	2.1%	0	0.0%	1	0.6%	4	1.2%	5	1.0%
Asian/Pacific Islander	3	2.2%	2	0.8%	0	0.0%	2	2.3%	3	1.7%	4	1.2%	7	1.4%
Hispanic	3	2.2%	4	1.6%	1	2.1%	1	1.1%	4	2.2%	5	1.5%	9	1.8%
White, non-Hispanic	101	75.4%	193	78.8%	32	68.1%	70	79.5%	133	73.5%	263	79.0%	396	77.0%
Ethnicity Unknown	5	3.7%	5	2.0%	5	10.6%	13	14.8%	10	5.5%	18	5.4%	28	5.4%
Grand Total	134	100.0%	245	100.0%	47	100.0%	88	100.0%	181	100.0%	333	100.0%	514	100.0%

*Non-Resident Alien

Note: Individual percentages might not add to 100% because of rounding.

**Full-Time Female Nonfaculty Employees
Job Classification by Percentage Ethnic Group
Fall 2007, Fall 2006, Fall 2005 and Fall 2004**

Fall 2007														
Ethnicity	Exec/admin /mgr		Other prof		Tech/paraprof		Clerical and sec		Skilled crafts		Service/		Total women	
	No.	%	No.	%	No.	%	No.	%	No.	%	No.	%	No.	%
International*	0	0.0%	1	1.3%	0	0.0%	0	0.0%	0	0.0%	0	0.0%	1	0.5%
African American, non-Hispanic	2	6.9%	10	13.3%	0	0.0%	2	3.6%	0	0.0%	17	70.8%	31	16.8%
Native American/Alaska Native	0	0.0%	0	0.0%	0	0.0%	1	1.8%	0	0.0%	1	4.2%	2	1.1%
Asian/Pacific Islander	0	0.0%	1	1.3%	0	0.0%	0	0.0%	0	0.0%	0	0.0%	1	0.5%
Hispanic	0	0.0%	1	1.3%	0	0.0%	0	0.0%	0	0.0%	0	0.0%	1	0.5%
White, non-Hispanic	25	86.2%	61	81.3%	1	100.0%	53	94.6%	0	0.0%	6	25.0%	146	78.9%
Ethnicity Unknown	2	6.9%	1	1.3%	0	0.0%	0	0.0%	0	0.0%	0	0.0%	3	1.6%
Grand Total	29	100.0%	75	100.0%	1	100.0%	56	100.0%	0	0.0%	24	100.0%	185	100.0%

Fall 2006														
Ethnicity	Exec/admin /mgr		Other prof		Tech/paraprof		Clerical and sec		Skilled crafts		Service/ maintenance		Total women	
	No.	%	No.	%	No.	%	No.	%	No.	%	No.	%	No.	%
International*	0	0.0%	1	1.6%	0	0.0%	0	0.0%	0	0.0%	0	0.0%	1	0.6%
African American, non-Hispanic	2	8.0%	7	11.5%	0	0.0%	4	6.9%	0	0.0%	21	77.8%	34	19.7%
Native American/Alaska Native	0	0.0%	0	0.0%	0	0.0%	1	1.7%	0	0.0%	1	3.7%	2	1.2%
Asian/Pacific Islander	0	0.0%	2	3.3%	0	0.0%	0	0.0%	0	0.0%	0	0.0%	2	1.2%
Hispanic	0	0.0%	0	0.0%	0	0.0%	0	0.0%	0	0.0%	0	0.0%	0	0.0%
White, non-Hispanic	22	88.0%	49	80.3%	2	100.0%	52	89.7%	0	0.0%	5	18.5%	130	75.1%
Ethnicity Unknown	1	4.0%	2	3.3%	0	0.0%	1	1.7%	0	0.0%	0	0.0%	4	2.3%
Grand Total	25	100.0%	61	100.0%	2	100.0%	58	100.0%	0	0.0%	27	100.0%	173	100.0%

Fall 2005														
Ethnicity	Exec/admin /mgr		Other prof		Tech/paraprof		Clerical and sec		Skilled crafts		Service/ maintenance		Total women	
	No.	%	No.	%	No.	%	No.	%	No.	%	No.	%	No.	%
International*	0	0.0%	1	1.5%	0	0.0%	0	0.0%	0	0.0%	0	0.0%	1	0.5%
African American, non-Hispanic	3	11.5%	10	15.4%	0	0.0%	1	1.7%	0	0.0%	18	64.3%	32	17.3%
Native American/Alaska Native	0	0.0%	0	0.0%	0	0.0%	1	1.7%	0	0.0%	3	10.7%	4	2.2%
Asian/Pacific Islander	0	0.0%	0	0.0%	0	0.0%	0	0.0%	0	0.0%	0	0.0%	0	0.0%
Hispanic	0	0.0%	0	0.0%	0	0.0%	0	0.0%	0	0.0%	0	0.0%	0	0.0%
White, non-Hispanic	22	84.6%	51	78.5%	6	100.0%	57	95.0%	0	0.0%	6	21.4%	142	76.8%
Ethnicity Unknown	1	3.8%	3	4.6%	0	0.0%	1	1.7%	0	0.0%	1	3.6%	6	3.2%
Grand Total	26	100.0%	65	100.0%	6	100.0%	60	100.0%	0	0.0%	28	100.0%	185	100.0%

Fall 2004														
Ethnicity	Exec/admin /mgr		Other prof		Tech/paraprof		Clerical and sec		Skilled crafts		Service/ maintenance		Total women	
	No.	%	No.	%	No.	%	No.	%	No.	%	No.	%	No.	%
International*	1	3.8%	1	1.6%	0	0.0%	0	0.0%	0	0.0%	0	0.0%	2	1.1%
Black, non-Hispanic	3	11.5%	9	14.8%	0	0.0%	3	4.9%	0	0.0%	14	56.0%	29	16.2%
American Indian/Alaska Native	0	0.0%	0	0.0%	0	0.0%	1	1.6%	0	0.0%	3	12.0%	4	2.2%
Asian/Pacific Islander	0	0.0%	0	0.0%	0	0.0%	0	0.0%	0	0.0%	0	0.0%	0	0.0%
Hispanic	0	0.0%	0	0.0%	0	0.0%	0	0.0%	0	0.0%	0	0.0%	0	0.0%
White, non-Hispanic	22	84.6%	49	80.3%	6	100.0%	56	91.8%	0	0.0%	7	28.0%	140	78.2%
Ethnicity Unknown	0	0.0%	2	3.3%	0	0.0%	1	1.6%	0	0.0%	1	4.0%	4	2.2%
Grand Total	26	100.0%	61	100.0%	6	100.0%	61	100.0%	0	0.0%	25	100.0%	179	100.0%

*Non-Resident Alien
Note: Individual percentages might not add to 100% because of rounding.

**Full-Time Female Nonfaculty Employees
Ethnicity by Percentage Job Classification
Fall 2007, Fall 2006, Fall 2005 and Fall 2004**

Fall 2007														
Ethnicity	Exec/admin/mgr		Other prof		Tech/paraprof		Clerical and sec		Skilled crafts		Service/maintenance		Total women	
	No.	%	No.	%	No.	%	No.	%	No.	%	No.	%	No.	%
International*	0	0.0%	1	100.0%	0	0.0%	0	0.0%	0	0.0%	0	0.0%	1	100.0%
African American, non-Hispanic	2	6.5%	10	32.3%	0	0.0%	2	6.5%	0	0.0%	17	54.8%	31	100.0%
Native American/Alaska Native	0	0.0%	0	0.0%	0	0.0%	1	50.0%	0	0.0%	1	50.0%	2	100.0%
Asian/Pacific Islander	0	0.0%	1	100.0%	0	0.0%	0	0.0%	0	0.0%	0	0.0%	1	100.0%
Hispanic	0	0.0%	1	100.0%	0	0.0%	0	0.0%	0	0.0%	0	0.0%	1	100.0%
White, non-Hispanic	25	17.1%	61	41.8%	1	0.7%	53	36.3%	0	0.0%	6	4.1%	146	100.0%
Ethnicity Unknown	2	66.7%	1	33.3%	0	0.0%	0	0.0%	0	0.0%	0	0.0%	3	100.0%
Grand Total	29	15.7%	75	40.5%	1	0.5%	56	30.3%	0	0.0%	24	13.0%	185	100.0%

Fall 2006														
Ethnicity	Exec/admin/mgr		Other prof		Tech/paraprof		Clerical and sec		Skilled crafts		Service/		Total women	
	No.	%	No.	%	No.	%	No.	%	No.	%	No.	%	No.	%
International*	0	0.0%	1	100.0%	0	0.0%	0	0.0%	0	0.0%	0	0.0%	1	100.0%
African American, non-Hispanic	2	5.9%	7	20.6%	0	0.0%	4	11.8%	0	0.0%	21	61.8%	34	100.0%
Native American/Alaska Native	0	0.0%	0	0.0%	0	0.0%	1	50.0%	0	0.0%	1	50.0%	2	100.0%
Asian/Pacific Islander	0	0.0%	2	100.0%	0	0.0%	0	0.0%	0	0.0%	0	0.0%	2	100.0%
Hispanic	0	0.0%	0	0.0%	0	0.0%	0	0.0%	0	0.0%	0	0.0%	0	0.0%
White, non-Hispanic	22	16.9%	49	37.7%	2	1.5%	52	40.0%	0	0.0%	5	3.8%	130	100.0%
Ethnicity Unknown	1	25.0%	2	50.0%	0	0.0%	1	25.0%	0	0.0%	0	0.0%	4	100.0%
Grand Total	25	14.5%	61	35.3%	2	1.2%	58	33.5%	0	0.0%	27	15.6%	173	100.0%

Fall 2005														
Ethnicity	Exec/admin/mgr		Other prof		Tech/paraprof		Clerical and sec		Skilled crafts		Service/		Total women	
	No.	%	No.	%	No.	%	No.	%	No.	%	No.	%	No.	%
International*	0	0.0%	1	100.0%	0	0.0%	0	0.0%	0	0.0%	0	0.0%	1	100.0%
African American, non-Hispanic	3	9.4%	10	31.3%	0	0.0%	1	3.1%	0	0.0%	18	56.3%	32	100.0%
Native American/Alaska Native	0	0.0%	0	0.0%	0	0.0%	1	25.0%	0	0.0%	3	75.0%	4	100.0%
Asian/Pacific Islander	0	0.0%	0	0.0%	0	0.0%	0	0.0%	0	0.0%	0	0.0%	0	0.0%
Hispanic	0	0.0%	0	0.0%	0	0.0%	0	0.0%	0	0.0%	0	0.0%	0	0.0%
White, non-Hispanic	22	15.5%	51	35.9%	6	4.2%	57	40.1%	0	0.0%	6	4.2%	142	100.0%
Ethnicity Unknown	1	16.7%	3	50.0%	0	0.0%	1	16.7%	0	0.0%	1	16.7%	6	100.0%
Grand Total	26	14.1%	65	35.1%	6	3.2%	60	32.4%	0	0.0%	28	15.1%	185	100.0%

Fall 2004														
Ethnicity	Exec/admin/mgr		Other prof		Tech/paraprof		Clerical and sec		Skilled crafts		Service/		Total women	
	No.	%	No.	%	No.	%	No.	%	No.	%	No.	%	No.	%
International*	1	50.0%	1	50.0%	0	0.0%	0	0.0%	0	0.0%	0	0.0%	2	100.0%
Black, non-Hispanic	3	10.3%	9	31.0%	0	0.0%	3	10.3%	0	0.0%	14	48.3%	29	100.0%
American Indian/Alaska Native	0	0.0%	0	0.0%	0	0.0%	1	25.0%	0	0.0%	3	75.0%	4	100.0%
Asian/Pacific Islander	0	0.0%	0	0.0%	0	0.0%	0	0.0%	0	0.0%	0	0.0%	0	0.0%
Hispanic	0	0.0%	0	0.0%	0	0.0%	0	0.0%	0	0.0%	0	0.0%	0	0.0%
White, non-Hispanic	22	15.7%	49	35.0%	6	4.3%	56	40.0%	0	0.0%	7	5.0%	140	100.0%
Ethnicity Unknown	0	0.0%	2	50.0%	0	0.0%	1	25.0%	0	0.0%	1	25.0%	4	100.0%
Grand Total	26	14.5%	61	34.1%	6	3.4%	61	34.1%	0	0.0%	25	14.0%	179	100.0%

*Non-Resident Alien
Note: Individual percentages might not add to 100% because of rounding.

**Full-Time Male Nonfaculty Employees
Job Classification by Percentage Ethnic Group
Fall 2007, Fall 2006, Fall 2005 and Fall 2004**

Fall 2007														
Ethnicity	Exec/admin/mgr		Other prof		Tech/paraprof		Clerical and sec		Skilled crafts		Service/		Total men	
	No.	%	No.	%	No.	%	No.	%	No.	%	No.	%	No.	%
International*	0	0.0%	0	0.0%	0	0.0%	0	0.0%	0	0.0%	0	0.0%	0	0.0%
African American, non-Hispanic	1	4.8%	3	11.5%	0	0.0%	3	27.3%	0	0.0%	20	51.3%	27	26.5%
Native American/Alaska Native	1	4.8%	0	0.0%	0	0.0%	0	0.0%	0	0.0%	0	0.0%	1	1.0%
Asian/Pacific Islander	1	4.8%	1	3.8%	0	0.0%	0	0.0%	0	0.0%	0	0.0%	2	2.0%
Hispanic	1	4.8%	1	3.8%	0	0.0%	0	0.0%	0	0.0%	0	0.0%	2	2.0%
White, non-Hispanic	17	81.0%	20	76.9%	4	100.0%	8	72.7%	1	100.0%	19	48.7%	69	67.6%
Ethnicity Unknown	0	0.0%	1	3.8%	0	0.0%	0	0.0%	0	0.0%	0	0.0%	1	1.0%
Grand Total	21	100%	26	100%	4	100%	11	100%	1	100.0%	39	100%	102	100.0%

Fall 2006														
Ethnicity	Exec/admin/mgr		Other prof		Tech/paraprof		Clerical and sec		Skilled crafts		Service/		Total men	
	No.	%	No.	%	No.	%	No.	%	No.	%	No.	%	No.	%
International*	0	0.0%	0	0.0%	0	0.0%	0	0.0%	0	0.0%	0	0.0%	0	0.0%
African American, non-Hispanic	3	14.3%	3	11.1%	0	0.0%	2	16.7%	0	0.0%	18	48.6%	26	25.7%
Native American/Alaska Native	0	0.0%	0	0.0%	0	0.0%	0	0.0%	0	0.0%	0	0.0%	0	0.0%
Asian/Pacific Islander	1	4.8%	0	0.0%	0	0.0%	0	0.0%	0	0.0%	0	0.0%	1	1.0%
Hispanic	2	9.5%	2	7.4%	0	0.0%	0	0.0%	0	0.0%	0	0.0%	4	4.0%
White, non-Hispanic	15	71.4%	21	77.8%	3	100.0%	10	83.3%	1	100.0%	19	51.4%	69	68.3%
Ethnicity Unknown	0	0.0%	1	3.7%	0	0.0%	0	0.0%	0	0.0%	0	0.0%	1	1.0%
Grand Total	21	100%	27	100%	3	100%	12	100%	1	100.0%	37	100%	101	100.0%

Fall 2005														
Ethnicity	Exec/admin/mgr		Other prof		Tech/paraprof		Clerical and sec		Skilled crafts		Service/		Total men	
	No.	%	No.	%	No.	%	No.	%	No.	%	No.	%	No.	%
International*	0	0.0%	0	0.0%	0	0.0%	0	0.0%	0	0.0%	0	0.0%	0	0.0%
African American, non-Hispanic	2	9.5%	3	10.3%	0	0.0%	1	12.5%	0	0.0%	16	42.1%	22	21.8%
Native American/Alaska Native	0	0.0%	0	0.0%	0	0.0%	0	0.0%	0	0.0%	0	0.0%	0	0.0%
Asian/Pacific Islander	1	4.8%	0	0.0%	0	0.0%	0	0.0%	0	0.0%	0	0.0%	1	1.0%
Hispanic	2	9.5%	2	6.9%	0	0.0%	0	0.0%	0	0.0%	0	0.0%	4	4.0%
White, non-Hispanic	15	71.4%	24	82.8%	4	100.0%	7	87.5%	1	100.0%	18	47.4%	69	68.3%
Ethnicity Unknown	1	4.8%	0	0.0%	0	0.0%	0	0.0%	0	0.0%	4	10.5%	5	5.0%
Grand Total	21	100.0%	29	100.0%	4	100.0%	8	100.0%	1	100.0%	38	100.0%	101	100.0%

Fall 2004														
Ethnicity	Exec/admin/mgr		Other prof		Tech/paraprof		Clerical and sec		Skilled crafts		Service/		Total men	
	No.	%	No.	%	No.	%	No.	%	No.	%	No.	%	No.	%
International*	0	0.0%	0	0.0%	0	0.0%	0	0.0%	0	0.0%	0	0.0%	0	0.0%
Black, non-Hispanic	2	12.5%	2	6.9%	0	0.0%	0	0.0%	0	0.0%	16	43.2%	20	20.8%
American Indian/Alaska Native	0	0.0%	0	0.0%	0	0.0%	0	0.0%	0	0.0%	0	0.0%	0	0.0%
Asian/Pacific Islander	0	0.0%	0	0.0%	0	0.0%	0	0.0%	0	0.0%	0	0.0%	0	0.0%
Hispanic	1	6.3%	2	6.9%	0	0.0%	0	0.0%	0	0.0%	0	0.0%	3	3.1%
White, non-Hispanic	13	81.3%	25	86.2%	4	100.0%	8	88.9%	1	100.0%	18	48.6%	69	71.9%
Ethnicity Unknown	0	0.0%	0	0.0%	0	0.0%	1	11.1%	0	0.0%	3	8.1%	4	4.2%
Grand Total	16	100.0%	29	100.0%	4	100.0%	9	100.0%	1	100.0%	37	100.0%	96	100.0%

*Non-Resident Alien

Note: Individual percentages might not add to 100% because of rounding.

**Full-Time Male Nonfaculty Employees
Ethnicity by Percentage Job Classification
Fall 2007, Fall 2006, Fall 2005 and Fall 2004**

Fall 2007														
Ethnicity	Exec/admin/mgr		Other prof		Tech/paraprof		Clerical and sec		Skilled crafts		Service/		Total men	
	No.	%	No.	%	No.	%	No.	%	No.	%	No.	%	No.	%
International*	0	0.0%	0	0.0%	0	0.0%	0	0.0%	0	0.0%	0	0.0%	0	0.0%
African American, non-Hispanic	1	3.7%	3	11.1%	0	0.0%	3	11.1%	0	0.0%	20	74.1%	27	100.0%
Native American/Alaska Native	1	100.0%	0	0.0%	0	0.0%	0	0.0%	0	0.0%	0	0.0%	1	100.0%
Asian/Pacific Islander	1	50.0%	1	50.0%	0	0.0%	0	0.0%	0	0.0%	0	0.0%	2	100.0%
Hispanic	1	50.0%	1	50.0%	0	0.0%	0	0.0%	0	0.0%	0	0.0%	2	100.0%
White, non-Hispanic	17	24.6%	20	29.0%	4	5.8%	8	11.6%	1	1.4%	19	27.5%	69	100.0%
Ethnicity Unknown	0	0.0%	1	100.0%	0	0.0%	0	0.0%	0	0.0%	0	0.0%	1	100.0%
Grand Total	21	20.6%	26	25.5%	4	3.9%	11	10.8%	1	1.0%	39	38.2%	102	100.0%

Fall 2006														
Ethnicity	Exec/admin/mgr		Other prof		Tech/paraprof		Clerical and sec		Skilled crafts		Service/		Total men	
	No.	%	No.	%	No.	%	No.	%	No.	%	No.	%	No.	%
International*	0	0.0%	0	0.0%	0	0.0%	0	0.0%	0	0.0%	0	0.0%	0	0.0%
African American, non-Hispanic	3	11.5%	3	11.5%	0	0.0%	2	7.7%	0	0.0%	18	69.2%	26	100.0%
Native American/Alaska Native	0	0.0%	0	0.0%	0	0.0%	0	0.0%	0	0.0%	0	0.0%	0	0.0%
Asian/Pacific Islander	1	100.0%	0	0.0%	0	0.0%	0	0.0%	0	0.0%	0	0.0%	1	100.0%
Hispanic	2	50.0%	2	50.0%	0	0.0%	0	0.0%	0	0.0%	0	0.0%	4	100.0%
White, non-Hispanic	15	21.7%	21	30.4%	3	4.3%	10	14.5%	1	1.4%	19	27.5%	69	100.0%
Ethnicity Unknown	0	0.0%	1	100.0%	0	0.0%	0	0.0%	0	0.0%	0	0.0%	1	100.0%
Grand Total	21	20.8%	27	26.7%	3	3.0%	12	11.9%	1	1.0%	37	36.6%	101	100.0%

Fall 2005														
Ethnicity	Exec/admin/mgr		Other prof		Tech/paraprof		Clerical and sec		Skilled crafts		Service/		Total men	
	No.	%	No.	%	No.	%	No.	%	No.	%	No.	%	No.	%
International*	0	0.0%	0	0.0%	0	0.0%	0	0.0%	0	0.0%	0	0.0%	0	0.0%
African American, non-Hispanic	2	9.1%	3	13.6%	0	0.0%	1	4.5%	0	0.0%	16	72.7%	22	100.0%
Native American/Alaska Native	0	0.0%	0	0.0%	0	0.0%	0	0.0%	0	0.0%	0	0.0%	0	0.0%
Asian/Pacific Islander	1	100.0%	0	0.0%	0	0.0%	0	0.0%	0	0.0%	0	0.0%	1	100.0%
Hispanic	2	50.0%	2	50.0%	0	0.0%	0	0.0%	0	0.0%	0	0.0%	4	100.0%
White, non-Hispanic	15	21.7%	24	34.8%	4	5.8%	7	10.1%	1	1.4%	18	26.1%	69	100.0%
Ethnicity Unknown	1	20.0%	0	0.0%	0	0.0%	0	0.0%	0	0.0%	4	80.0%	5	100.0%
Grand Total	21	20.8%	29	28.7%	4	4.0%	8	7.9%	1	1.0%	38	37.6%	101	100.0%

Fall 2004														
Ethnicity	Exec/admin/mgr		Other prof		Tech/paraprof		Clerical and sec		Skilled crafts		Service/		Total men	
	No.	%	No.	%	No.	%	No.	%	No.	%	No.	%	No.	%
International*	0	0.0%	0	0.0%	0	0.0%	0	0.0%	0	0.0%	0	0.0%	0	0.0%
Black, non-Hispanic	2	10.0%	2	10.0%	0	0.0%	0	0.0%	0	0.0%	16	80.0%	20	100.0%
American Indian/Alaska Native	0	0.0%	0	0.0%	0	0.0%	0	0.0%	0	0.0%	0	0.0%	0	0.0%
Asian/Pacific Islander	0	0.0%	0	0.0%	0	0.0%	0	0.0%	0	0.0%	0	0.0%	0	0.0%
Hispanic	1	33.3%	2	66.7%	0	0.0%	0	0.0%	0	0.0%	0	0.0%	3	100.0%
White, non-Hispanic	13	18.8%	25	36.2%	4	5.8%	8	11.6%	1	1.4%	18	26.1%	69	100.0%
Ethnicity Unknown	0	0.0%	0	0.0%	0	0.0%	1	25.0%	0	0.0%	3	75.0%	4	100.0%
Grand Total	16	16.7%	29	30.2%	4	4.2%	9	9.4%	1	1.0%	37	38.5%	96	100.0%

*Non-Resident Alien
Note: Individual percentages might not add to 100% because of rounding.

**Full-Time Total (Female and Male) Nonfaculty Employees
Job Classification by Percentage Ethnic Group
Fall 2007, Fall 2006, Fall 2005, and Fall 2004**

Fall 2007														
Ethnicity	Exec/admin/mgr		Other prof		Tech/paraprof		Clerical and sec		Skilled crafts		Service/		Total	
	No.	%	No.	%	No.	%	No.	%	No.	%	No.	%	No.	%
International*	0	0.0%	1	1.0%	0	0.0%	0	0.0%	0	0.0%	0	0.0%	1	0.3%
African American, non-Hispanic	3	6.0%	13	12.9%	0	0.0%	5	7.5%	0	0.0%	37	58.7%	58	20.2%
Native American/Alaska Native	1	2.0%	0	0.0%	0	0.0%	1	1.5%	0	0.0%	1	1.6%	3	1.0%
Asian/Pacific Islander	1	2.0%	2	2.0%	0	0.0%	0	0.0%	0	0.0%	0	0.0%	3	1.0%
Hispanic	1	2.0%	2	2.0%	0	0.0%	0	0.0%	0	0.0%	0	0.0%	3	1.0%
White, non-Hispanic	42	84.0%	81	80.2%	5	100.0%	61	91.0%	1	100.0%	25	39.7%	215	74.9%
Ethnicity Unknown	2	4.0%	2	2.0%	0	0.0%	0	0.0%	0	0.0%	0	0.0%	4	1.4%
Grand Total	50	100.0%	101	100.0%	5	100.0%	67	100.0%	1	100.0%	63	100.0%	287	100.0%

Fall 2006														
Ethnicity	Exec/admin/mgr		Other prof		Tech/paraprof		Clerical and sec		Skilled crafts		Service/		Total	
	No.	%	No.	%	No.	%	No.	%	No.	%	No.	%	No.	%
International*	0	0.0%	1	1.1%	0	0.0%	0	0.0%	0	0.0%	0	0.0%	1	0.4%
African American, non-Hispanic	5	10.9%	10	11.4%	0	0.0%	6	8.6%	0	0.0%	39	60.9%	60	21.9%
Native American/Alaska Native	0	0.0%	0	0.0%	0	0.0%	1	1.4%	0	0.0%	1	1.6%	2	0.7%
Asian/Pacific Islander	1	2.2%	2	2.3%	0	0.0%	0	0.0%	0	0.0%	0	0.0%	3	1.1%
Hispanic	2	4.3%	2	2.3%	0	0.0%	0	0.0%	0	0.0%	0	0.0%	4	1.5%
White, non-Hispanic	37	80.4%	70	79.5%	5	100.0%	62	88.6%	1	100.0%	24	37.5%	199	72.6%
Ethnicity Unknown	1	2.2%	3	3.4%	0	0.0%	1	1.4%	0	0.0%	0	0.0%	5	1.8%
Grand Total	46	100.0%	88	100.0%	5	100.0%	70	100.0%	1	100.0%	64	100.0%	274	100.0%

Fall 2005														
Ethnicity	Exec/admin/mgr		Other prof		Tech/paraprof		Clerical and sec		Skilled crafts		Service/		Total	
	No.	%	No.	%	No.	%	No.	%	No.	%	No.	%	No.	%
International*	0	0.0%	1	1.1%	0	0.0%	0	0.0%	0	0.0%	0	0.0%	1	0.3%
African American, non-Hispanic	5	10.6%	13	13.8%	0	0.0%	2	2.9%	0	0.0%	34	51.5%	54	18.9%
Native American/Alaska Native	0	0.0%	0	0.0%	0	0.0%	1	1.5%	0	0.0%	3	4.5%	4	1.4%
Asian/Pacific Islander	1	2.1%	0	0.0%	0	0.0%	0	0.0%	0	0.0%	0	0.0%	1	0.3%
Hispanic	2	4.3%	2	2.1%	0	0.0%	0	0.0%	0	0.0%	0	0.0%	4	1.4%
White, non-Hispanic	37	78.7%	75	79.8%	10	100.0%	64	94.1%	1	100.0%	24	36.4%	211	73.8%
Ethnicity Unknown	2	4.3%	3	3.2%	0	0.0%	1	1.5%	0	0.0%	5	7.6%	11	3.8%
Grand Total	47	100.0%	94	100.0%	10	100.0%	68	100.0%	1	100.0%	66	100.0%	286	100.0%

Fall 2004														
Ethnicity	Exec/admin/mgr		Other prof		Tech/paraprof		Clerical and sec		Skilled crafts		Service/		Total men	
	No.	%	No.	%	No.	%	No.	%	No.	%	No.	%	No.	%
International*	1	2.4%	1	3.3%	0	0.0%	0	0.0%	0	0.0%	0	0.0%	2	1.6%
Black, non-Hispanic	5	11.9%	2	6.7%	0	0.0%	0	0.0%	0	0.0%	16	43.2%	23	18.7%
American Indian/Alaska Native	0	0.0%	0	0.0%	0	0.0%	0	0.0%	0	0.0%	0	0.0%	0	0.0%
Asian/Pacific Islander	0	0.0%	0	0.0%	0	0.0%	0	0.0%	0	0.0%	0	0.0%	0	0.0%
Hispanic	1	2.4%	2	6.7%	0	0.0%	0	0.0%	0	0.0%	0	0.0%	3	2.4%
White, non-Hispanic	35	83.3%	25	83.3%	4	100.0%	8	88.9%	1	100.0%	18	48.6%	91	74.0%
Ethnicity Unknown	0	0.0%	0	0.0%	0	0.0%	1	11.1%	0	0.0%	3	8.1%	4	3.3%
Grand Total	42	100.0%	30	100.0%	4	100.0%	9	100.0%	1	100.0%	37	100.0%	123	100.0%

*Non-Resident Alien
Note: Individual percentages might not add to 100% because of rounding.