



Removing and Installing Java
Welch Center for Graduate & Professional Studies
Goucher College

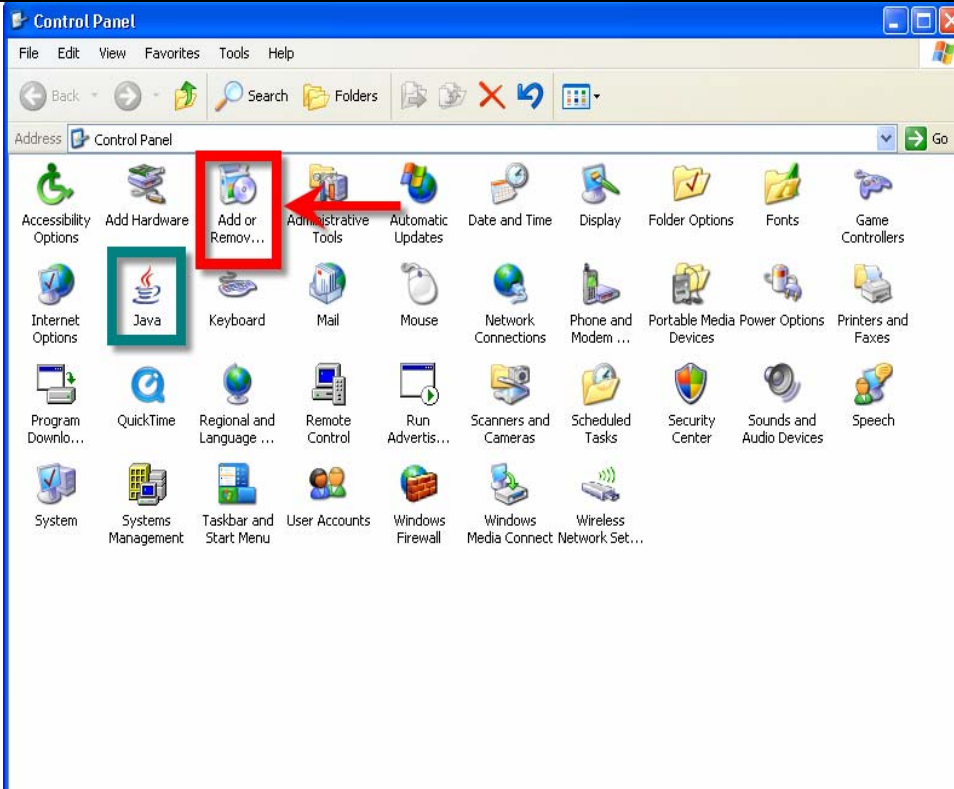
Java

<p>Java Plug-in</p>	<p>Java Plug-in software enables enterprise customers to direct applets or beans written in the Java programming language on their intranet WebPages to run using Sun's Java Runtime Environment (JRE), instead of the browser's default. This enables an enterprise to deploy applets that take full advantage of the latest capabilities and features of the Java platform and be assured that they will run reliably and consistently.</p> <p>An applet is a program written in the Java programming language that can be included in an HTML page, much in the same way an image is included in a page. When you use a Java technology-enabled browser to view a page that contains an applet, the applet's code is transferred to your system and executed by the browser's Java Virtual Machine (JVM)</p> <p>Source: http://www.java.com</p>
<p>Wimba Voice Tools</p>	<p>All Wimba Voice Tools inside Blackboard require the use of Java Plug-in software. To download Java go to http://www.java.com/en/download/index.jsp</p>
<p>Installing Java</p>	<p>Before installing any new Java program, make sure you uninstall all old versions from your computer.</p>
<p>Java icon</p>	<p>If you have Java already installed in your computer you will see the following icon on the bottom right of your screen:</p>  <p>You may encounter problems when using the Voice Tools if you have downloaded several versions of Java, and they are all installed in your computer. You will need to uninstall the older versions.</p>

Checking that You Have Only One Java (the latest version)

<p>Go to Start, and select Control Panel</p>	
--	--

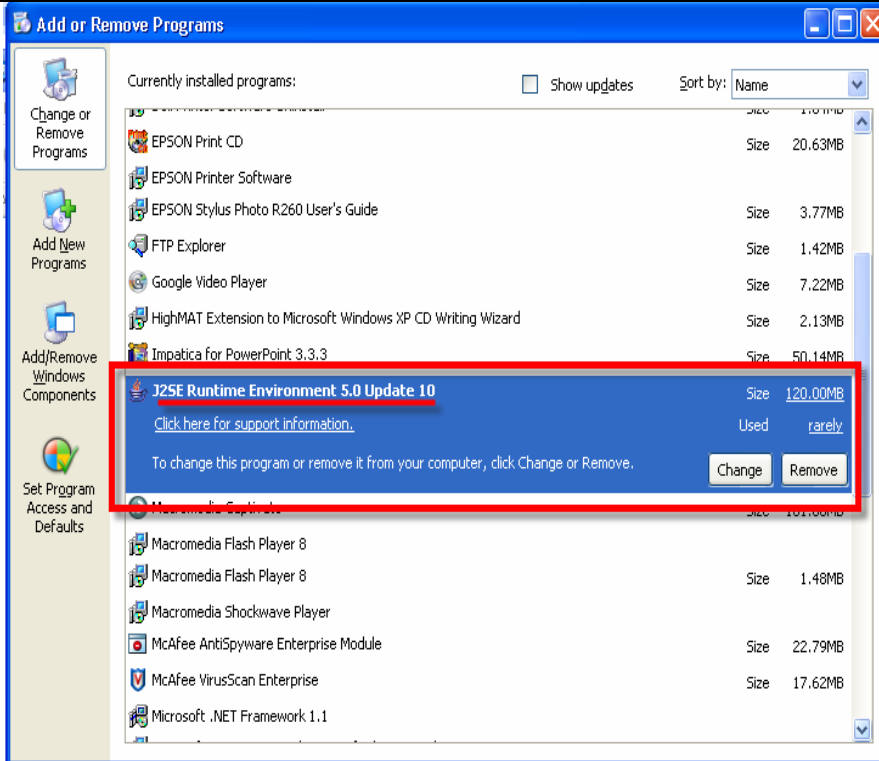
The **Control Panel** window opens. It shows the programs available. In the example Java is installed, however, to check if only one version is running, go to **Add or Remove...**



The **Add or Remove Programs** window opens.

Scroll down and find Java. You need to have the **Java Runtime environment 5.0 update 10** or better.

If you have other versions click **Remove**, and erase the previous versions.



Installing the new version of Java

Go to the following Web site; Follow the directions to download the latest Java.
<http://www.java.com/en/download/index.jsp>

Wimba

If you experience problems with Wimba Voice Tools due to Java applets, call Wimba Help at **866-350-4978**