

# How to Setup Virtual Private Network Access for Windows 2000

## Before you begin...

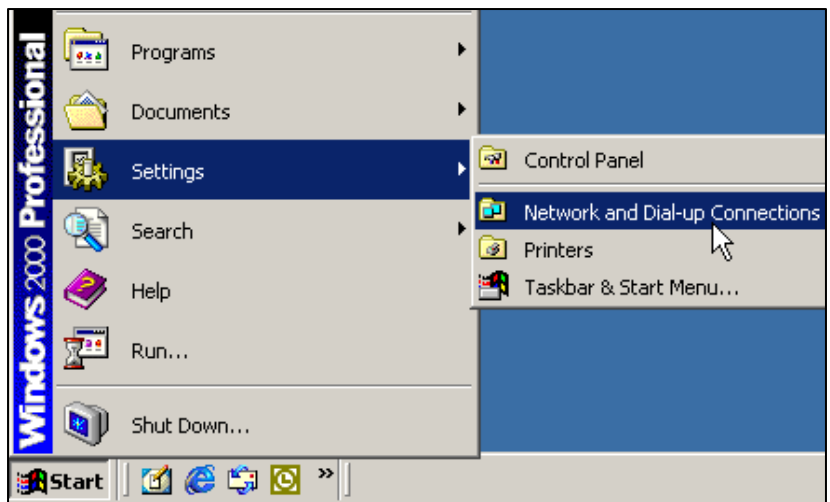
For you to use Goucher College VPN you will need an Internet Service Provider (ISP) account. Such as AOL, CompuServe, MSN, EarthLink, a Cable ISP or a DSL account. If you need a dial-in account Goucher College will provide this to you. VPN will not be needed for a Goucher Dial in account. Call the Help Desk at x6322 on-campus or 410-337-6322 from off campus. **Note:** These instructions are based on the assumption that DSL or cable modem service and equipment are installed and operational.

## What is VPN you ask?

VPN stands for Virtual Private Network. This will let you connect to the Goucher network to access files stored on Meyerhoff, Magellan or Darwin through another ISP. VPN will also allow you to access the Goucher Library's Databases.

## Let's get started!

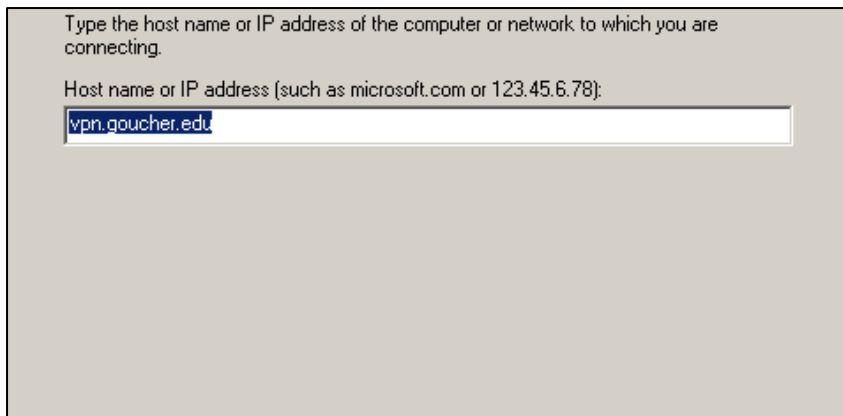
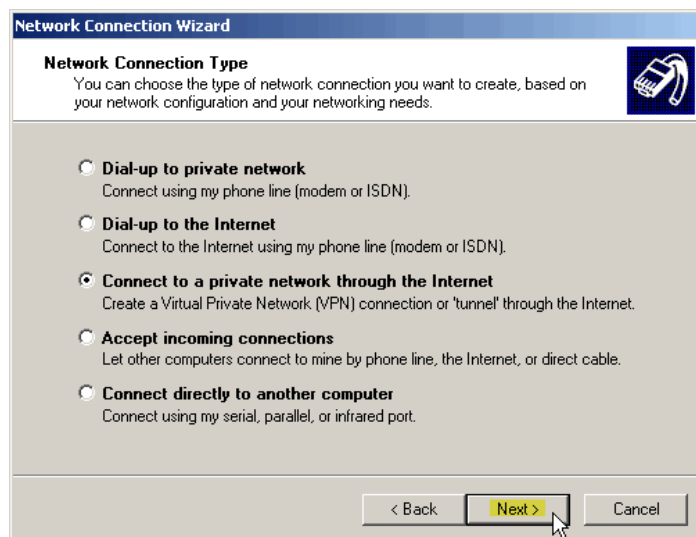
Click on the **Start** menu then select **Settings** → **Network and Dial-up Connections**.



Double-click on **Make New Connection** icon. The New Connection Wizard will appear. **NOTE:** You may get a screen that asks you to provide your telephone settings. Please fill out this information to advance to the New Connection Wizard screen then click on **Next**.

# How to Setup Virtual Private Network Access for Windows 2000

Select **Connect to a private network through the Internet** then click **Next**.



Enter **vpn.goucher.edu** for the Host name then click **Next**.

Make sure **Anyone's use** is selected then click **Next**. **Note:** Everyone may not get this screen.

**NOTE:** If you see a screen that wants you to select an initial selection, choose **Do not dial the initial connection** then click **Next**.

Enter **Goucher VPN** for connection name.

Check **Add a shortcut to my desktop** and click **Finish** to close the wizard.



## How to Setup Virtual Private Network Access for Windows 2000

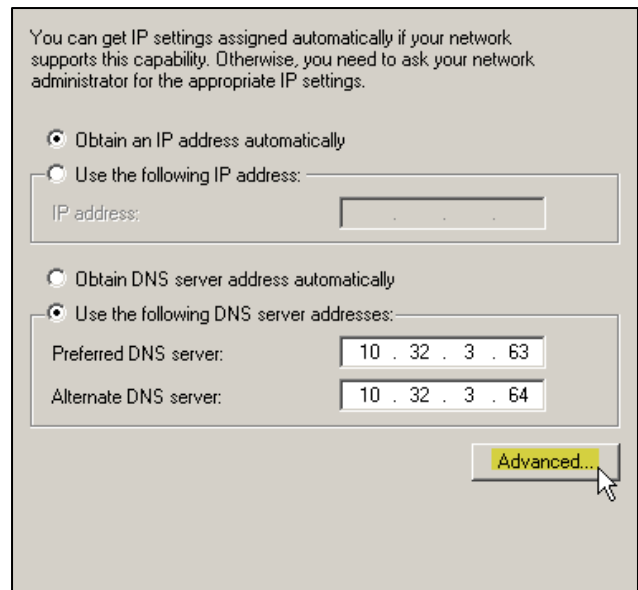
Click on the **Properties** button then the **Networking** tab and select **Internet Protocol (TCP/IP)** in the *This connection uses the following items* section then click **Properties**.

Select **Use the following DNS server addresses** then type the following information in their respective fields:

**Preferred DNS server: 10.32.3.63**

**Alternate DNS server: 10.32.3.64**

Then click on the **Advanced** button.

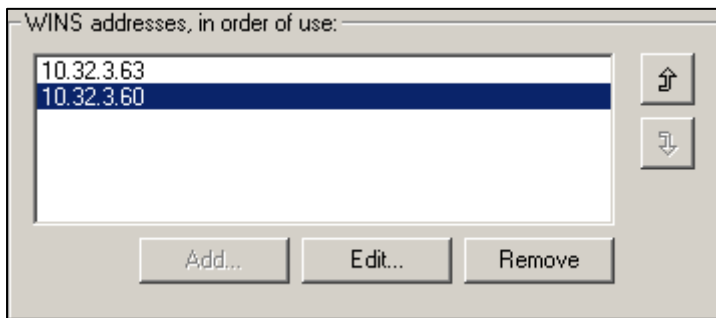


You can get IP settings assigned automatically if your network supports this capability. Otherwise, you need to ask your network administrator for the appropriate IP settings.

Obtain an IP address automatically  
 Use the following IP address: \_\_\_\_\_  
IP address: \_\_\_\_\_

Obtain DNS server address automatically  
 Use the following DNS server addresses: \_\_\_\_\_  
Preferred DNS server: 10 . 32 . 3 . 63  
Alternate DNS server: 10 . 32 . 3 . 64

Advanced...



WINS addresses, in order of use:

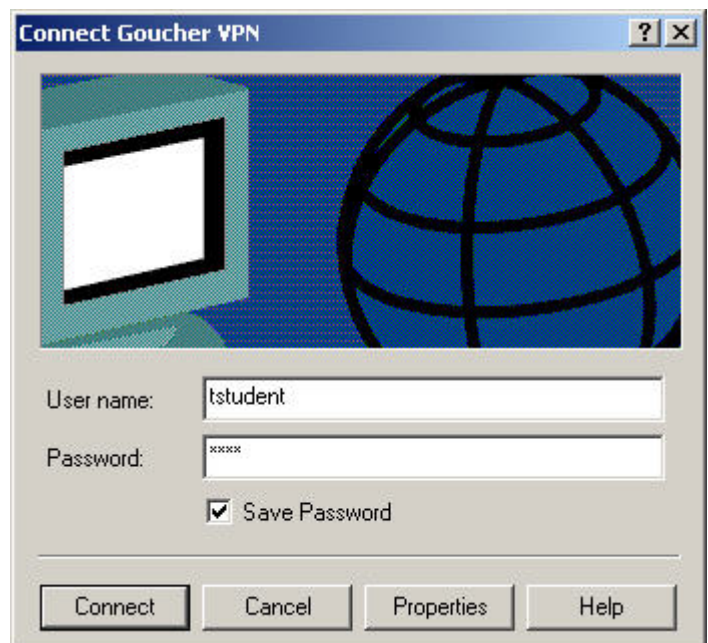
10.32.3.63
10.32.3.60

Add... Edit... Remove

Click on the **WINS** tab then select the **Add** button. Type **10.32.3.63** then click **OK**. Select **Add** again and type **10.32.3.60** then click **OK** to close the Advanced Settings and Properties windows.

Now enter your Goucher User Name and Password and click **Connect**. You will be connected to Goucher College through VPN.

From now on to connect to Goucher College through VPN, click on the icon on your desktop.



Connect Goucher VPN

User name: tstudent  
Password: xxxx  
 Save Password

Connect Cancel Properties Help

## How to Setup Virtual Private Network Access for Windows 2000

**Well you ask, how do I access my personal folders or my Department folders once I've connected using VPN? Well it's like this:**

My Network Places shortcuts are best used when you need to access your files stored on Darwin or Magellan once connected via dialup or VPN. If a shortcut has not been created automatically for your Darwin, Magellan or Meyerhoff folders follow the instructions below:

1. To open My Network Places, click on the **Start** menu, and then click **My Computer**.
2. Under Other Places, click **My Network Places**.
3. Under Network Tasks, click **Add a network place**.
4. The Add Network Place Wizard appears. Click **Next** to continue.
5. Select **Choose another network location** and then click **Next**.
6. In the Internet or network address field type the following path:


For faculty/staff: [\\magellan.goucher.edu\users\<username>](http://magellan.goucher.edu/users/<username>)  
[\\magellan.goucher.edu\dept](http://magellan.goucher.edu/dept)  
[\\meyerhoff.goucher.edu\faculty\\_web\<username>](http://meyerhoff.goucher.edu/faculty_web/<username>)  
[\\meyerhoff.goucher.edu\staff\\_web\<username>](http://meyerhoff.goucher.edu/staff_web/<username>)

For students: [\\darwin.goucher.edu\users\<username>](http://darwin.goucher.edu/users/<username>)  
[\\meyerhoff.goucher.edu\students\\_web\<username>](http://meyerhoff.goucher.edu/students_web/<username>)

Replace <username> with your actual username used to access email and logon to the network. Then click **Next**.

7. Type a name for the Network Place in the field provided then click **Next**.
8. Click **Finish** to exit. A window will appear displaying the contents of the shortcut you just created in your Network Place.

From now on, once you have connected to the Goucher network you will be able to access your files quicker through My Network Places.

 **NOTE:** If you have multiple computers connecting to the Internet using a DSL or cable modem, you can only have one machine establishing VPN connection to the Goucher network.