

How to Setup VPN Access to Goucher Network for OS 10.5+ (Leopard)

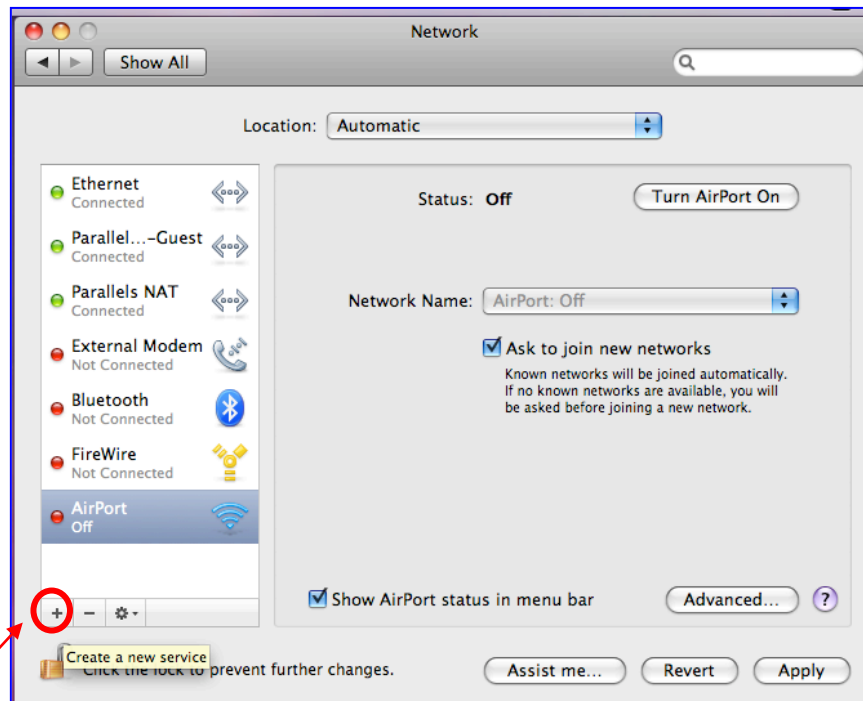
Please note: these instructions will only work on Macs with OS version 10.5 or higher.

Connecting via VPN

Click the **System Preferences** icon on the **Dock**. You can also access it from the **Apple** menu.



Click the **Network** icon in the **Internet & Network** section.



Click on the **plus (+)** sign in the lower left hand corner.

Select the interface and enter a name for the new service.

Interface: VPN

VPN Type: PPTP

Service Name: Goucher VPN

Cancel Create

A drop down option menu will appear. Select **VPN** for the **Interface** field. You will notice the second option will change and another field will appear. Select **PPTP** for **VPN Type** and type “**Goucher VPN**” in the **Service Name** field. Click **Create**.

Status: Not Connected

Configuration: Default

Server Address: vpn.goucher.edu

Account Name: tstudent

Encryption: Automatic (128 bit or 40 bit)

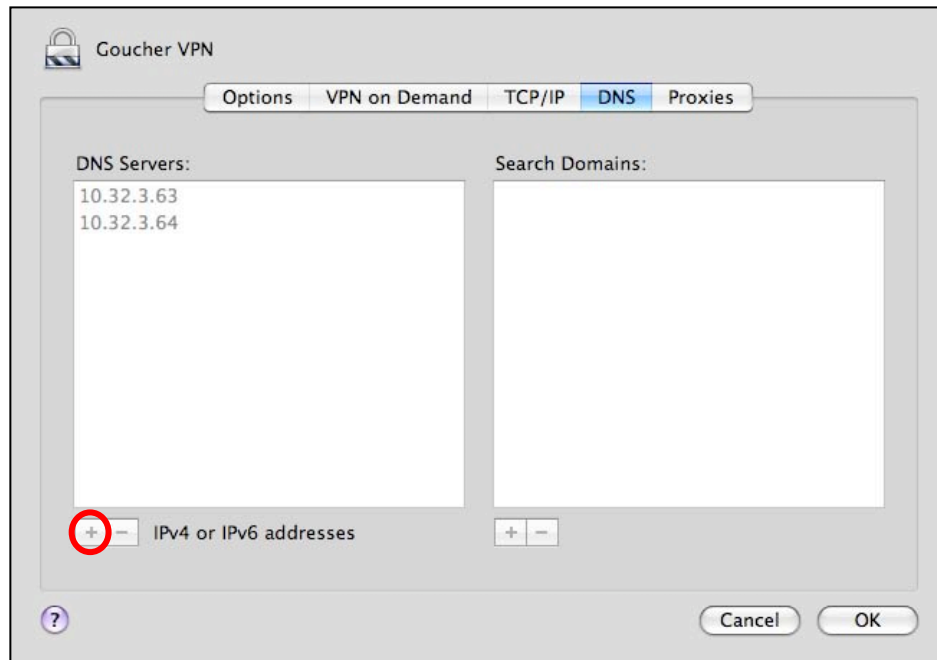
Authentication Settings...

Connect

Show VPN status in menu bar

Advanced... ?

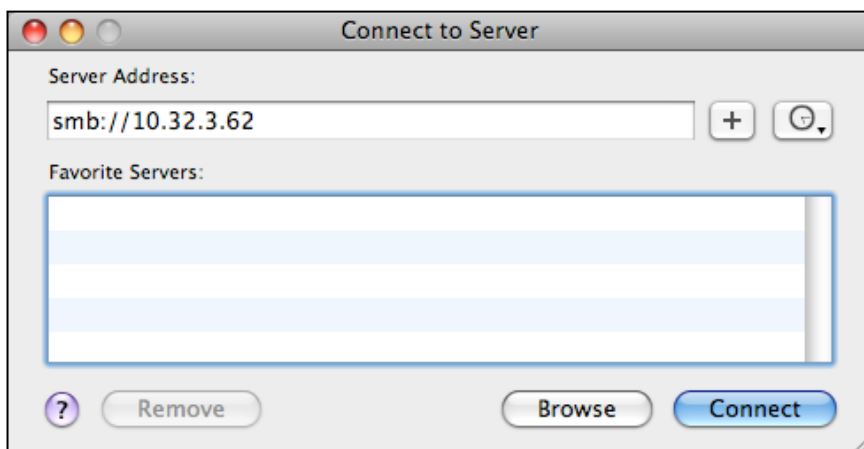
1. In the **Server Address** field type **vpn.goucher.edu**.
2. Type your Goucher username in the **Account Name** field.
3. Click the **Authentication Settings...** button. Select the **Password** option and type in your Goucher password. Click **OK**.



1. Click the **Advanced...** button. Select **Send all traffic over VPN connection**. Leave the other default options as is and click.
2. Then click the **DNS** tab. Click on the plus (+) in the lower left hand of the window.
3. Then type in the following DNS Server address:**10.32.3.63**.
4. Click plus (+) again and enter **10.32.3.64** then click **OK**.
5. Select **Show VPN status in menu bar** and then click **Connect** to test.

Note: Check your firewall and Internet settings if you are unable to connect. You will need to contact your Internet Service Provider (ISP) if you need assistance changing settings.

Accessing User Folder



In order to access **Magellan** you will need to do the following:

Click on the **Go** menu from the Desktop.
Click on **Connect to Server**.

In the Server Address field type **smb://10.32.3.62** and click **Connect**.

A dialog box will appear asking for your username and password.

In order to access **Darwin** you will need to do the following:

Click on the **Go** menu from the Desktop.

Click on **Connect to Server**.

In the Server Address field type **smb://10.32.3.34** and click **Connect**.

A dialog box will appear asking for your username and password.



To disconnect the VPN connection, simply click on the icon located left of the timer on the menu bar then select **Disconnect**. FYI, please make sure to disconnect from VPN before surfing the Internet because its performance will dramatically decrease while connected.

Note: If you have multiple computers connecting to the Internet using a DSL or cable modem, you can only have one machine establishing VPN connection to the Goucher network.